



PLANT THERAPY

100% PURE ESSENTIAL OILS

GC/MS BATCH NUMBER: W10101

ESSENTIAL OIL: WINTERGREEN
BOTANICAL NAME: GAULTHERIA PROCUMBENS
ORIGIN: USA

KEY CONSTITUENTS PRESENT IN THIS BATCH OF WINTERGREEN OIL	%
METHYL SALICYLATE	99.3
ETHYL SALICYLATE	0.1
LINALOOL	0.1
1,8-CINEOLE	0.02
α -PINENE	0.01
β -PINENE	0.01

Comments from Robert Tisserand: Smells like a genuine wintergreen, and conforms to the ISO standard for Gaultheria procumbens wintergreen oil on all 6 key constituents.

CUSTOMER :

**PLANT THERAPY
126 Locust Street South
Twin Falls, ID 83 301
USA**

Sample nature: ESSENTIAL OIL
Botanical species: GAULTHERIA PROCUMBENS
Reference name: WINTERGREEN
Batch number: W10101
Origin: USA
Part: LEAF
Pyre^essences reference: E014
Date of reception: 06/15/2015
Date analysis: 06/29/2015
Packaging: Amber flask of 5 ml – ambient temperature
Analysis: GC Classic

Validated report by :

Daniel DANTIN



GAS CHROMATOGRAPHY norm NF ISO 11024

Analysis conditions :

CPG 7890 / MS 5975 AGILENT – Column : VF WAX polar 60 m × 0,25 mm × 0,5 µm

CPG 5890 FID AGILENT - Column : INNOWAX polar 60 m × 0,25 mm × 0,5 µm

Temperature program : 6 min à 60°C – 2°C/min → 250°C – 10 min 250 °C

Carrier gas He : 23 psis/MS – 30 psis/FID

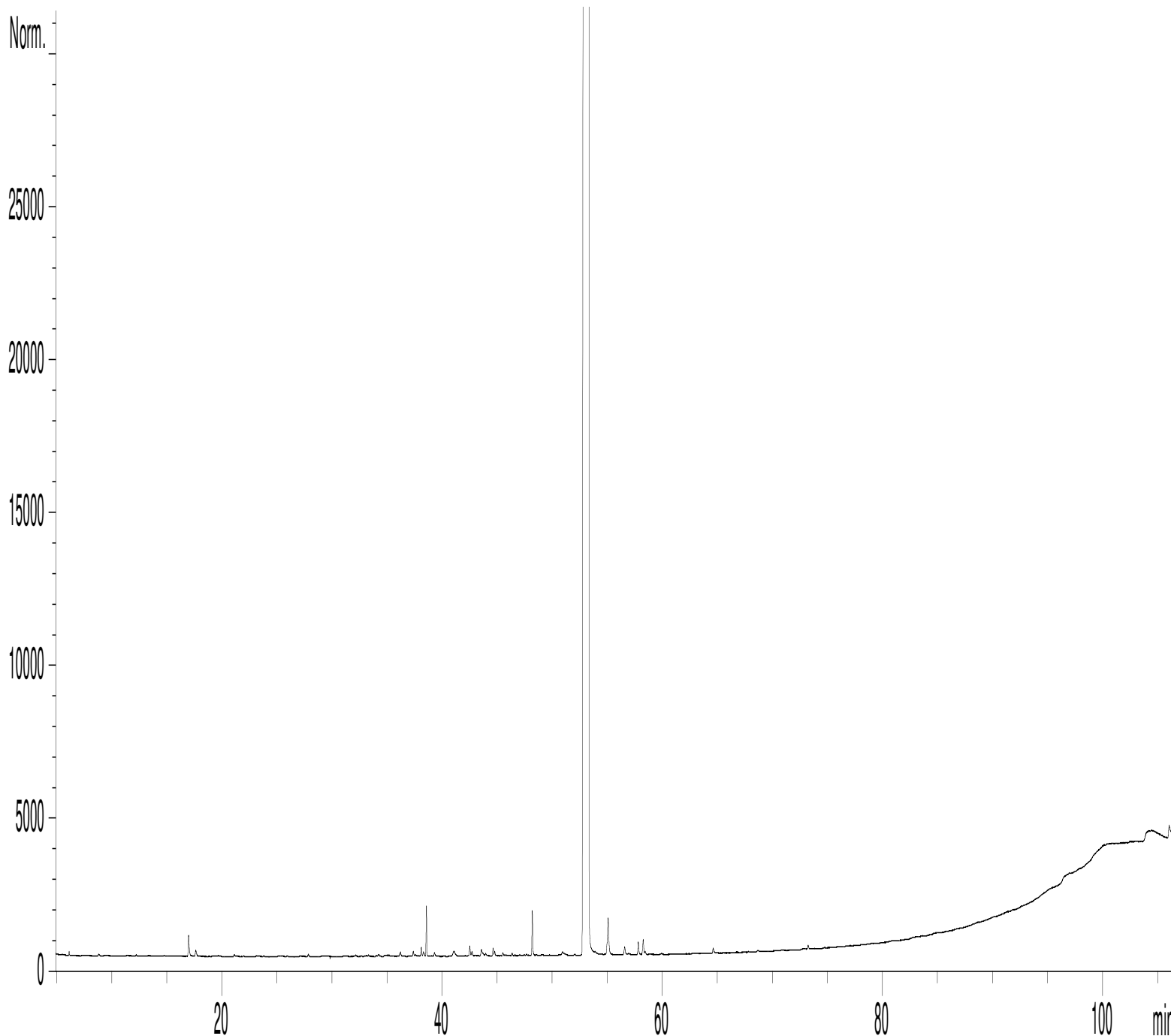
Sample injection / split : 1 µl of 10% solution in hexane,

Mass range : 30 to 350, Oil components are identified by a combination of retention times (our own database) and mass spectra library NKS 75 000 records,

Percentages are calculated from GC/FID peaks areas without using corrections factors,

Chromatographic profile (GC/FID)

FID1 A, (Y:\PLANTHER\GF15E014.D)



Identification results 1 : WINTERGREEN BATCH W10101

Peak	RT (min)	Compound name	%	Norm (%)	Allergens (%)
1	6,1	α-PINENE	0,01	Tr – 0,20	
2	8,8	β-PINENE	0,01	Tr – 0,05	
3	17,0	LIMONENE	0,05		0,05
4	17,6	1,8-CINEOLE	0,02	Tr – 0,40	
5	21,1	p-CYMENE	0,01		
6	36,2	ETHYL-4-METHYLPENTANOL	0,01		
7	37,4	CAMPHOR	0,01		
8	38,6	LINALOOL	0,07	Tr – 0,20	0,07
9	41,1	2,4-NONANEDIONE	0,02		
10	42,5	TERPINENE-4-OL	0,02		
11	43,6	AROMADENDRENE	0,03		
12	44,6	ELSHOLTZIA KETONE Mw=166	0,02		
13	48,2	α-TERPINEOL	0,08		
14	50,9	GERANIAL	0,02		0,02
15	53,3	METHYL SALICYLATE	99,30	97,0 – 99,8	
16	55,1	ETHYL SALICYLATE	0,11	Tr – 0,3	
17	56,6	GERANIOL	0,03		0,03
18	57,8	BENZYL ALCOHOL	0,02		0,02
19	58,3	SAFROLE	0,04		
20	64,6	PHENOL Mw=94	0,02		
21	73,2	EUGENOL	0,01		0,01
22	106,1	PALMITIC ACID	0,09		
		TOTAL	100,00		0,20