

GC/MS BATCH NUMBER: W20100

ESSENTIAL OIL: WINTERGREEN ORGANIC
BOTANICAL NAME: GAULTHERIA PROCUMBENS
ORIGIN: NEPAL

KEY CONSTITUENTS PRESENT IN THIS BATCH OF WINTERGREEN ORGANIC OIL	%
METHYL SALICYLATE	99.4
ETHYL SALICYLATE	0.1
LINALOOL	0.05
α -PINENE	0.02
β -PINENE	0.01
1,8-CINEOLE	0.01

Comments from Robert Tisserand: A classic wintergreen oil. The six key constituents conform to the ISO standard.

CUSTOMER :

**PLANT THERAPY
126 Locust Street South
Twin Falls, ID 83 301
USA**

Sample nature: ESSENTIAL OIL
Botanical species: GAULTHERIA PROCUMBENS
Reference name: WINTERGREEN ORGANIC
Batch number: W20100411
Origin: NEPAL
Part: LEAF
Pyreñessences reference: F072
Date of reception: 10/02/2015
Date analysis: 10/15/2015
Packaging: Amber flask of 5 ml – ambient temperature
Analysis: GC Classic

Validated report by :

Daniel DANTIN

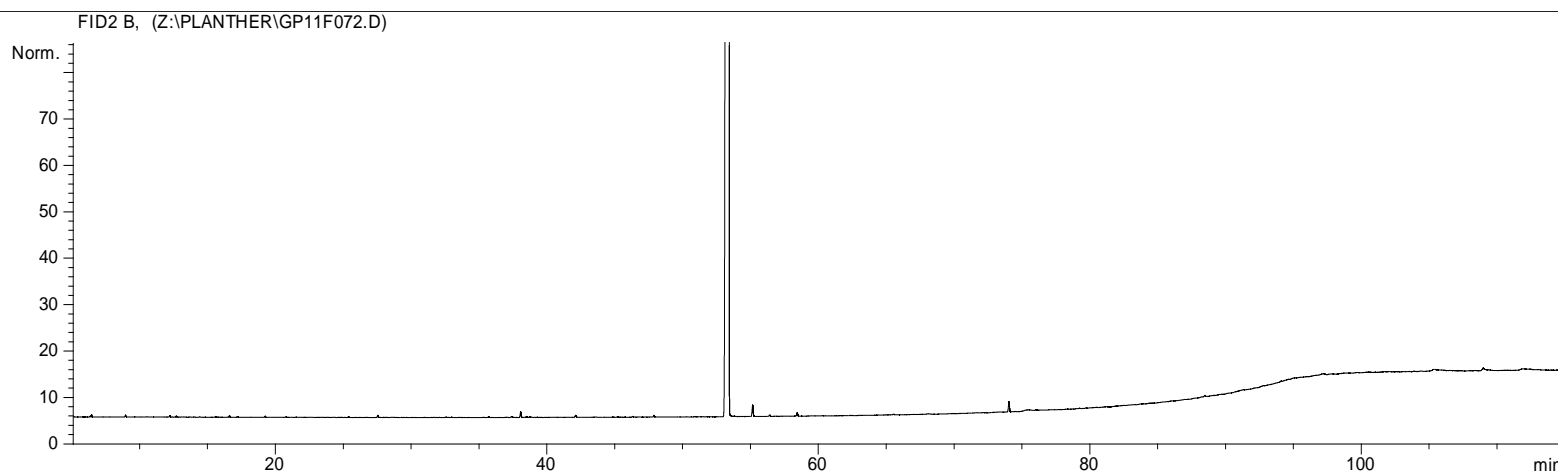


GAS CHROMATOGRAPHY norm NF ISO 11024

Analysis conditions :

CPG 6890 / MS 5973 AGILENT – Column : VF WAX polar 60 m × 0,25 mm × 0,5 µm
 CPG 6890 FID AGILENT - Column : VF WAX polar 60 m × 0,25 mm × 0,5 µm
 Temperature program : 6 min à 60°C – 2°C/min → 250°C – 10 min 250 °C
 Carrier gas He : 23 psis/MS – 30 psis/FID
 Sample injection / split : 1 µl of 10% solution in hexane,
 Mass range : 30 to 350, Oil components are identified by a combination of retention times
 (our own database) and mass spectra library NKS 75 000 records,
 Percentages are calculated from GC/FID peaks areas without using corrections factors,

Chromatographic profile (GC/FID)



Identification results : WINTERGREEN BATCH N° W20100411

Peak	RT (min)	Compound name	%	Norm (%)	Allergens (%)
1	6,5	ETHANOL	0,01		
2	8,9	α-PINENE	0,02	Tr – 0,20	
3	12,2	β-PINENE	0,01	Tr – 0,05	
4	16,5	LIMONENE	0,02		0,02
5	17,2	1,8-CINEOLE	0,01	Tr – 0,40	
6	19,2	MENTHATRIENE ISOMER	0,01		
7	25,3	1-HEXANOL	0,01		
8	27,5	3-HEXEN-1-OL	0,02		
9	38,0	LINALOOL	0,05	Tr – 0,20	0,05
10	38,5	1-OCTANOL	0,01		
11	42,1	β-CARYOPHYLLENE	0,03		
12	46,3	ETHYL BENZOATE	0,03		
13	47,9	α-TERPINEOL	0,01		
14	53,3	METHYL SALICYLATE	99,36	97,0 – 99,8	
15	55,1	ETHYL SALICYLATE	0,11	Tr – 0,3	
16	56,4	GERANIOL	0,01		0,01
17	58,4	BENZYL ALCOHOL	0,03		0,03
18	65,5	PHENOL Mw=94	0,02		
19	74,0	EUGENOL	0,10		0,10
20	76,0	CINNAMIC ALCOOL	0,01		0,01
21	111,9	PALMITIC ACID	0,11		
		TOTAL	99,99		0,22