



GC/MS BATCH NUMBER: TL0103

ESSENTIAL OIL: THYME LINALOOL
BOTANICAL NAME: THYMUS VULGARIS
ORIGIN: SPAIN

KEY CONSTITUENTS PRESENT IN THIS BATCH OF THYME LINALOOL OIL	%
LINALOOL	72.9
TERPINEN-4-ol	5.5
γ-TERPINENE	3.7
MYRCENE	3.1
p-CYMENE	2.1
α-TERPINENE	1.8
α-THUJENE	1.2

Comments from Robert Tisserand: Beautiful, "sweet thyme" odor quality. Constituents are in expected amounts.

Date : February 14, 2018

CERTIFICATE OF ANALYSIS - GC PROFILING

SAMPLE IDENTIFICATION

Internal code : 18B13-PTH4-1-CC

Customer identification : Thyme Linalool - Spain - TL010377R

Type : Essential oil

Source : *Thymus vulgaris* ct. Linalool

Customer : Plant Therapy

ANALYSIS

Method: PC-PA-014-17J19 - Analysis of the composition of an essential oil, or other volatile liquid, by FAST GC-FID (in French); identifications validated by GC-MS.

Analyst : Sarah-Eve Tremblay, M. Sc. A., Chimiste

Analysis date : February 14, 2018

Checked and approved by :

Alexis St-Gelais, M. Sc., chimiste 2013-174

Note: This report may not be published, including online, without the written consent from Laboratoire PhytoChemia.

This report is digitally signed, it is only considered valid if the digital signature is intact.

CONCLUSION

No adulterant, contaminant or diluent has been detected using this method.

ANALYSIS SUMMARY

Identification	DB-5 (%)	DB-WAX (%)	Classe
Acetone	tr		Aliphatic ketone
3-Methylbutyral	tr	tr	Aliphatic aldehyde
Methyl 2-methylbutyrate	tr	0.01*	Aliphatic ester
Hexanol	tr	tr	Aliphatic alcohol
Hashishene	0.06	0.95*	Monoterpene
Tricyclene	0.01	[0.01]*	Monoterpene
α -Thujene	1.16	1.17	Monoterpene
α -Pinene	0.88	[0.95]*	Aliphatic alcohol
Camphene	0.24	0.23	Monoterpene
Thuja-2,4(10)-diene	0.02	0.22*	Monoterpene
Sabinene	0.47*	[0.22]*	Monoterpene
β -Pinene	[0.47]*	0.26	Monoterpene
Octen-3-ol	0.02	0.02	Aliphatic alcohol
Octan-3-one	0.03	0.10*	Aliphatic ketone
Myrcene	3.14	3.11	Monoterpene
Pseudolimonene	0.31*	0.15	Monoterpene
α -Phellandrene	[0.31]*	0.15	Monoterpene
Δ^3 -Carene	0.02	0.01	Monoterpene
α -Terpinene	1.80	1.81	Monoterpene
para-Cymene	2.12	2.14	Monoterpene
1,8-Cineole	1.15*	0.51*	Monoterpenic ether
β -Phellandrene	[1.15]*	[0.51]*	Monoterpene
Limonene	[1.15]*	0.62	Monoterpene
(Z)- β -Ocimene	0.03	3.72*	Monoterpene
(E)- β -Ocimene	0.09	[0.10]*	Monoterpene
γ -Terpinene	3.68	[3.72]*	Monoterpene
cis-Sabinene hydrate	0.30	0.63*	Monoterpenic alcohol
cis-Linalool oxide (fur.)	0.14	0.14	Monoterpenic alcohol
Terpinolene	0.31	0.31	Monoterpene
trans-Linalool oxide (fur.)	0.33*	[0.63]*	Monoterpenic alcohol
para-Cymenene	[0.33]*	0.03	Monoterpene
trans-Sabinene hydrate	tr	0.09	Monoterpenic alcohol
Linalool	72.88	72.47*	Monoterpenic alcohol
cis-para-Menth-2-en-1-ol	0.07	[72.47]*	Monoterpenic alcohol
Camphor	0.15	0.14	Monoterpenic ketone
trans-para-Menth-2-en-1-ol	0.08	0.07	Monoterpenic alcohol
Borneol	0.95	1.92*	Monoterpenic alcohol
Terpinen-4-ol	5.47	5.45*	Monoterpenic alcohol
para-Cymen-8-ol	0.03	0.03	Monoterpenic alcohol
α -Terpineol	0.97	[1.92]*	Monoterpenic alcohol
cis-Piperitol	0.09	0.05	Monoterpenic alcohol
Verbenone	0.16	0.18	Monoterpenic ketone
Bornyl formate	0.04		Monoterpenic ester
Carvacrol methyl ether	0.03	[5.45]*	Monoterpenic ether
Linalyl acetate	0.18	0.21	Monoterpenic ester
Bornyl acetate	0.05	0.05	Monoterpenic ester
Thymol	0.91	0.91	Monoterpenic alcohol
Carvacrol	0.09	0.09	Monoterpenic alcohol

α -Terpinyl acetate	0.04	0.04	Monoterpenic ester
β -Caryophyllene	0.26	0.28	Sesquiterpene
α -Humulene	tr	0.02	Sesquiterpene
Germacrene D	0.01	[1.92]*	Sesquiterpene
Caryophyllene oxide	0.04	0.04	Sesquiterpenic ether
α -Bisabolol	0.01	0.01	Sesquiterpenic alcohol
Total identified	98.85%	98.32%	

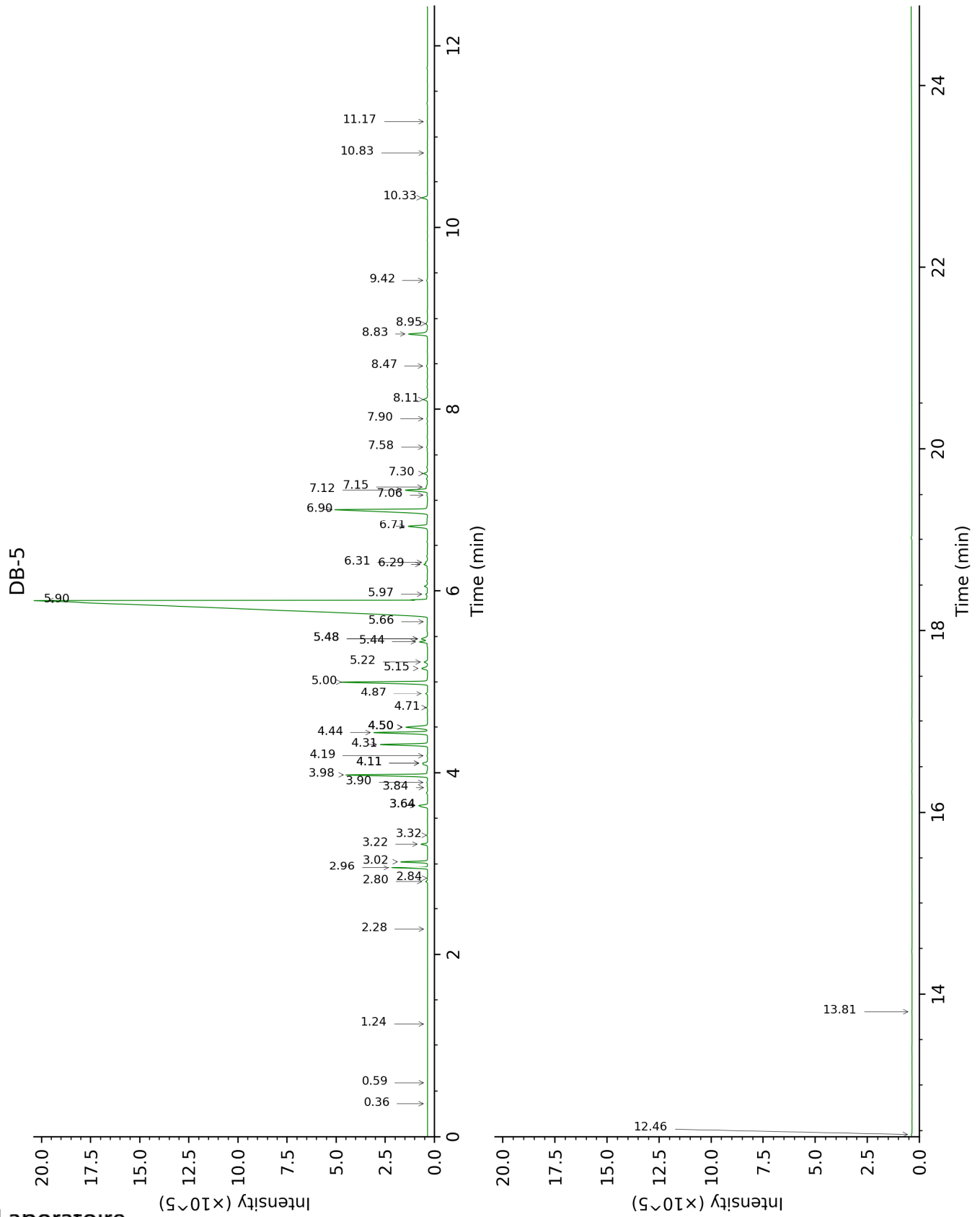
*: Two or more compounds are coeluting on this column

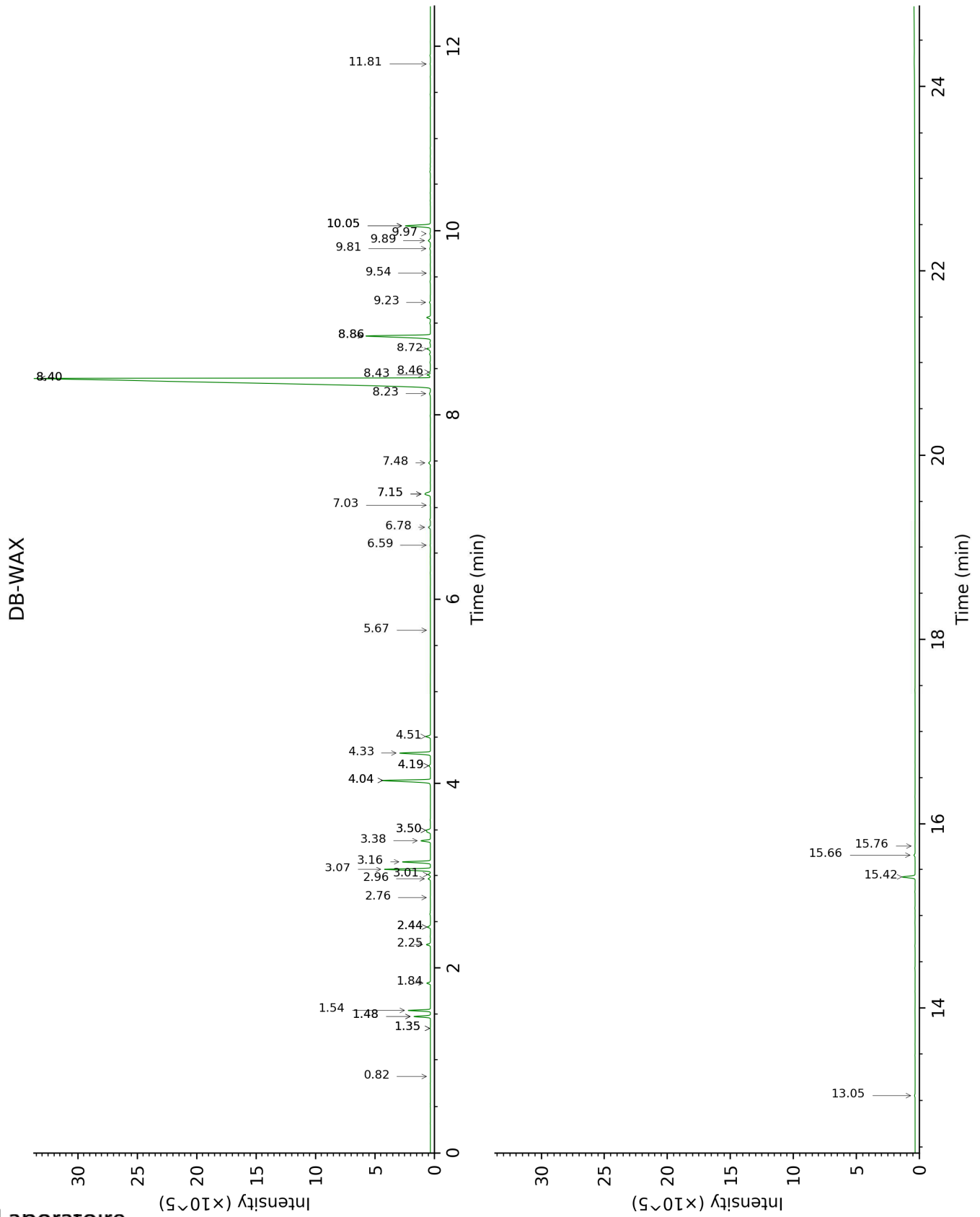
[xx]: Duplicate percentage due to coelutions, not taken account in the identified total

tr: The compound has been detected below 0.005% of total signal.

Note: no correction factor was applied

This page was intentionally left blank. The following pages present the complete data of the analysis.





FULL ANALYSIS DATA

Identification	Column DB-5			Column DB-WAX		
	R.T	R.I	%	R.T	R.I	%
Acetone	0.36	495	tr			
3-Methylbutyral	0.59	639	tr	0.82	888	tr
Methyl 2-methylbutyrate	1.24	769	tr	1.35*	975	0.01
Hexanol	2.28	870	tr	5.67	1324	tr
Hashishene	2.80	911	0.06	1.48*	995	0.95
Tricyclene	2.84	914	0.01	1.35*	975	[0.01]
α -Thujene	2.96	921	1.16	1.54	1002	1.17
α -Pinene	3.02	926	0.88	1.48*	995	[0.95]
Camphene	3.22	939	0.24	1.84	1030	0.23
Thuja-2,4(10)-diene	3.32	945	0.02	2.44*	1087	0.22
Sabinene	3.64*	967	0.47	2.44*	1087	[0.22]
β -Pinene	3.64*	967	[0.47]	2.25	1069	0.26
Octen-3-ol	3.84	980	0.02	7.03	1422	0.02
Octan-3-one	3.90	984	0.03	4.19*	1219	0.10
Myrcene	3.98	989	3.14	3.07	1136	3.11
Pseudolimonene	4.11*	998	0.31	3.01	1131	0.15
α -Phellandrene	4.11*	998	[0.31]	2.96	1128	0.15
Δ^3 -Carene	4.19	1003	0.02	2.76	1112	0.01
α -Terpinene	4.31	1011	1.80	3.16	1142	1.81
para-Cymene	4.44	1019	2.12	4.33	1229	2.14
1,8-Cineole	4.50*	1023	1.15	3.50*	1168	0.51
β -Phellandrene	4.50*	1023	[1.15]	3.50*	1168	[0.51]
Limonene	4.50*	1023	[1.15]	3.38	1160	0.62
(Z)- β -Ocimene	4.72	1036	0.03	4.04*	1208	3.72
(E)- β -Ocimene	4.87	1046	0.09	4.19*	1219	[0.10]
γ -Terpinene	5.00	1054	3.68	4.04*	1208	[3.72]
cis-Sabinene hydrate	5.15	1064	0.30	7.15*	1431	0.63
cis-Linalool oxide (fur.)	5.22	1068	0.14	6.78	1404	0.14
Terpinolene	5.44	1082	0.31	4.51	1242	0.31
trans-Linalool oxide (fur.)	5.48*	1084	0.33	7.15*	1431	[0.63]
para-Cymenene	5.48*	1084	[0.33]	6.59	1389	0.03
trans-Sabinene hydrate	5.66	1096	tr	8.23	1511	0.09
Linalool	5.90	1110	72.88	8.40*	1524	72.47
cis-para-Menth-2-en-1-ol	5.97	1115	0.07	8.40*	1524	[72.47]
Camphor	6.29	1136	0.15	7.48	1455	0.14
trans-para-Menth-2-en-1-ol	6.31	1137	0.08	9.23	1588	0.07
Borneol	6.71	1162	0.95	10.05*	1654	1.92
Terpinen-4-ol	6.90	1175	5.47	8.86*	1560	5.45
para-Cymen-8-ol	7.06	1185	0.03	11.81	1801	0.03
α -Terpineol	7.12	1188	0.97	10.05*	1654	[1.92]

<i>cis</i> -Piperitol	7.15	1190	0.09	9.81	1634	0.05
Verbenone	7.30	1200	0.16	9.89	1641	0.18
Bornyl formate	7.58	1219	0.04			
Carvacrol methyl ether	7.90	1240	0.03	8.86*	1560	[5.45]
Linalyl acetate	8.11	1254	0.18	8.43	1527	0.21
Bornyl acetate	8.48	1278	0.05	8.46	1529	0.05
Thymol	8.83	1303	0.91	15.42	2137	0.91
Carvacrol	8.95	1311	0.09	15.66	2161	0.09
α -Terpinyl acetate	9.42	1344	0.04	9.97	1647	0.04
β -Caryophyllene	10.33	1408	0.26	8.72	1549	0.28
α -Humulene	10.83	1445	tr	9.54	1613	0.02
Germacrene D	11.17	1471	0.01	10.05*	1654	[1.92]
Caryophyllene oxide	12.46	1570	0.04	13.05	1911	0.04
α -Bisabolol	13.81	1680	0.01	15.76	2171	0.01
Total identified		98.85%			98.32%	
Total reported		98.85%			98.32%	

*: Two or more compounds are coeluting on this column

[xx]: Duplicate percentage due to coelutions, not taken account in the identified total

†: Peaks apexes were resolved, but peaks overlapped and were summed for analysis

tr: The compound has been detected below 0.005% of total signal.

Note: no correction factor was applied
R.T.: Retention time (minutes)
R.I.: Retention index