



PLANT THERAPY

100% PURE ESSENTIAL OILS

GC/MS BATCH NUMBER: R20100

ESSENTIAL OIL: ROSALINA
BOTANICAL NAME: MELALEUCA ERICIFOLIA
ORIGIN: AUSTRALIA

KEY CONSITUENTS IN THIS BATCH OF ROSALINA OIL	%
LINALOOL	42.5
1,8-CINEOLE	16.0
α -PINENE	13.9
LIMONENE	7.2
TERPINEN-4-OL	6.4
γ -TERPINENE	3.2
p-CYMENE	2.0
GERANIAL	1.2
α -TERPINENE	1.0

Comments from Robert Tisserand: A very good quality rosalina oil with characteristic clean odor, and constituents in expected amounts.

CUSTOMER :

**PLANT THERAPY
126 Locust Street South
Twin Falls, ID 83 301
USA**

Sample nature: ESSENTIAL OIL
Botanical species: MELALEUCA ERICIFOLIA
Reference name: ROSALINA
Batch number: R20100
Origin: AUSTRALIA
Part: LEAF/TWIG
Pyrenessences reference: D226
Date of reception: 03/19/2015
Date analysis: 04/07/2015
Packaging: Amber flask of 5 ml – ambient temperature
Analysis: Classic

Validated report by :

Daniel DANTIN



GAS CHROMATOGRAPHY norm NF ISO 11024

Analysis conditions :

CPG 7890 / MS 5975 AGILENT – Column : VF WAX polar 60 m × 0,25 mm × 0,5 µm

CPG 5890 FID AGILENT – Column : INNOWAX polar 60 m × 0,25 mm × 0,5 µm

Temperature program : 6 mn to 60 °C –2 °C/mn→250 °C - 20mn to 250 °C

Carrier gas He : 23 psis/MS – 30 psis/FID

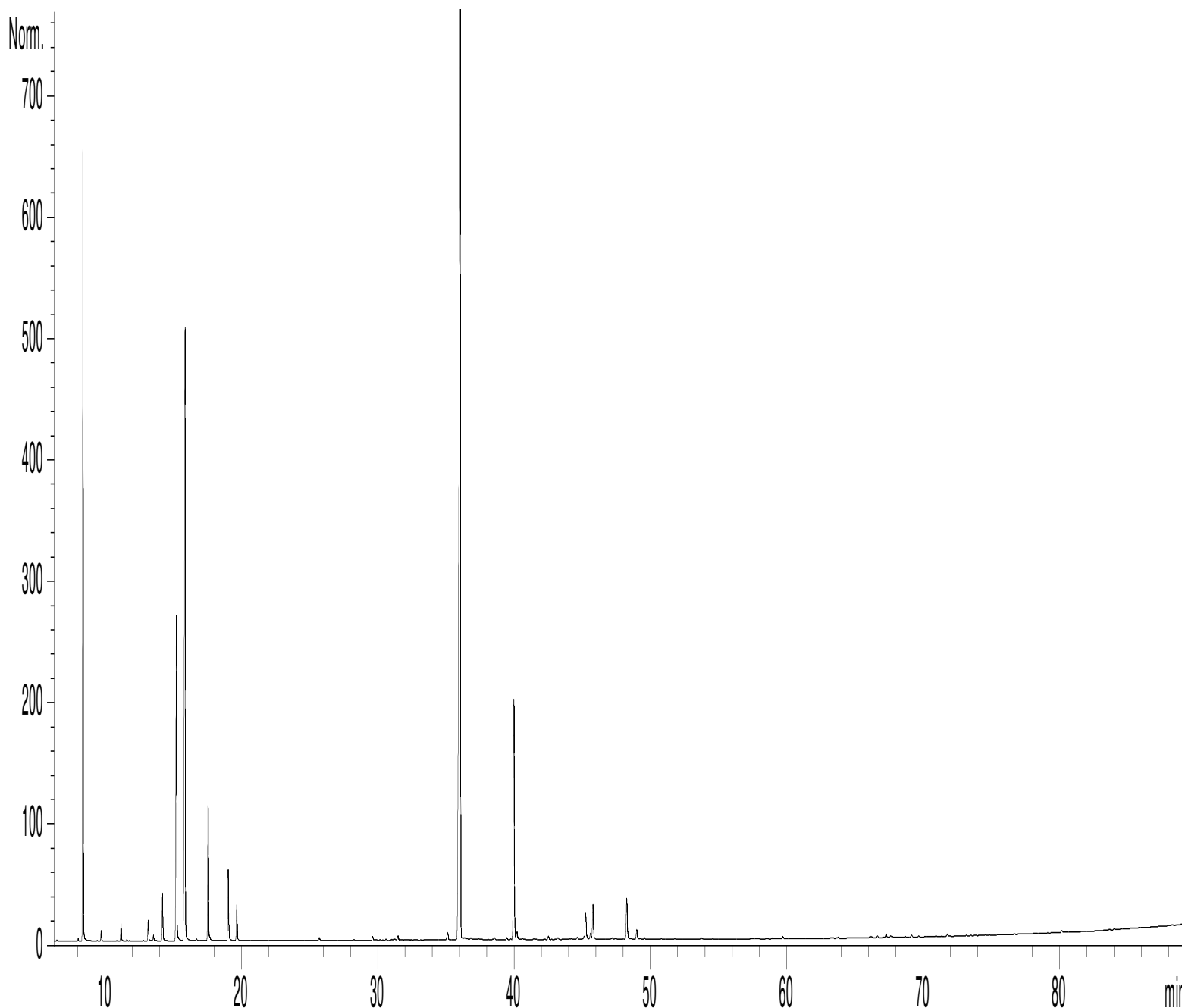
Sample injection / split : 1 µl of 10 % solution in hexane,

Mass range : 30 to 350, Oil components are identified by a combination of retention times
(our own database) and mass spectra library NKS 75 000 records,

Percentages are calculated from GC/FID peaks areas without using corrections factors,

Chromatographic profile (GC/FID)

FID1 A, (Z:\PLANTHER\ME15D226.D)



Identification results 1 : ROSALINA AUSTRALIA BATCH R20100

Peak	RT (min)	Compound name	%	Norm (%)	Allergens (%)
1	5,2	ACETONE	0,02		
2	6,1	OCTENE DIMETHYL ISOMER	0,01		
3	6,5	ETHANOL	0,01		
4	8,0	TRICYCLENE	0,03		
5	8,4	α-PINENE	13,93		
6	8,5	α-THUYENE	0,14		
7	9,7	CAMPHENE	0,18		
8	11,2	β-PINENE	0,35		
9	11,6	SABINENE	0,03		
10	11,8	PINADIENE	0,02		
11	13,2	β-MYRCENE	0,42		
12	13,5	α-PHELLANDRENE	0,12		
13	13,7	ψ-LIMONENE	0,01		
14	14,2	α-TERPINENE	1,01		
15	15,2	LIMONENE	7,18		7,18
16	15,9	1,8-CINEOLE	15,96		
17	16,7	Cis-β-OCIMENE	0,04		
18	17,6	γ-TERPINENE	3,22		
19	17,7	Trans-β-OCIMENE	0,14		
20	19,0	p-CYMENE	1,96		
21	19,7	TERPINOLENE	0,83		
22	25,7	PINENE EPOXIDE	0,09		
23	29,5	α,p-DIMETHYLSTYRENE	0,02		
24	29,6	LINALOOL Cis- OXIDE	0,08		
25	30,2	LIMONENE cis-1,2-EPOXIDE	0,01		
26	30,6	6-METHYL-5-HEPTEN-2-OL	0,03		
27	31,0	LIMONENE trans-1,2-EPOXIDE	0,03		
28	31,2	α-CUBEBENE	0,04		
29	31,5	LINALOOL Trans-OXIDE	0,12		
30	32,0	CYCLOSATIVENE	0,01		
31	32,9	α-COPAENE	0,02		
32	35,1	COMPONENT Mw=138	0,25		
33	36,0	α-GURJUNENE	0,10		
34	36,1	LINALOOL	42,51		42,51
35	36,8	LINALYL ACETATE	0,03		
36	37,4	Trans-p-MENTH-2-EN-1-OL	0,02		
37	38,6	FURANIC COMPOUND	0,04		
38	37,7	TERPINENE-1-OL	0,02		
39	39,5	β-CARYOPHYLLENE	0,06		
40	40,0	TERPINENE-4-OL	6,38		
41	40,2	AROMADENDRENE	0,25		
42	40,6	SESQUITERPENE	0,02		
43	41,5	Cis-p-MENTH-2-EN-1-OL	0,02		
44	42,5	ALLO-AROMADENDRENE	0,07		
45	42,6	Trans-PINOCARVEOL	0,03		
46	43,0	E-β-FARNESENE	0,01		
47	43,2	ZONARENE	0,07		
48	44,0	Trans-p-MENTHA-2,8-DIEN-1-OL	0,02		

Identification results 2 : ROSALINA AUSTRALIA BATCH R20100

Peak	RT (min)	Compound name	%	Norm (%)	Allergens (%)
49	44,1	δ-TERPINEOL	0,02		
50	45,1	α-HUMULENE	0,05		
51	45,3	Trans-VERBENOL	0,78		
52	45,5	NERAL	0,02		0,02
53	45,6	LEDENE	0,15		
54	45,8	α-TERPINEOL	0,96		
55	47,2	VERBENONE	0,03		
56	47,9	β-SELINENE	0,01		
57	47,8	α-MUUROLENE	0,01		
58	48,0	α-SELINENE	0,01		
59	48,3	GERANIAL	1,17		1,17
60	48,9	δ-CADINENE	0,26		
61	49,6	EPOXY TERPENIC ACETATE	0,04		
62	50,8	CADINA-1,4-DIENE	0,03		
63	51,8	ALIPHATIC OXYGENED COMPONENT	0,02		
64	50,8	CALAMENENE	0,03		
65	54,6	p-CYMENE-8-OL	0,03		
66	59,7	3,7-OCTADIENE-2,6-DIOL, 2,6-DIMETHYL	0,05		
67	63,8	LEDOL	0,03		
68	66,1	GLEENOL	0,03		
69	66,1	Epi-CUBENOL	0,04		
70	66,7	CUBENOL	0,05		
71	67,3	GLOBULOL	0,10		
72	67,6	VIRIDIFLOROL	0,04		
73	67,7	CYCLOOCTANONE	0,01		
74	68,8	10-epi-γ-EUDESOL	0,02		
75	69,1	ROSIFOLIOL	0,06		
76	69,7	SPATHULENOL	0,03		
77	71,8	ACETOXY KETONE COMPOUND	0,06		
78	74,6	SESQUITERPENOL	0,02		
79	80,2	SESQUITERPENOL	0,06		
		TOTAL	99,99		50,69