

Date : March 27, 2019

CERTIFICATE OF ANALYSIS – GC PROFILING

SAMPLE IDENTIFICATION

Internal code : 19C25-PTH02-1-SCC

Customer identification : Rhododendron - Nepal - RJ010188R

Type : Essential oil

Source : *Rhododendron anthopogon*

Customer : Plant Therapy


ANALYSIS

Method: PC-PA-014-17J19 - Analysis of the composition of an essential oil, or other volatile liquid, by FAST GC-FID (in French); identifications validated by GC-MS.

Analyst : Sylvain Mercier, M. Sc., Chimiste

Analysis date : March 26, 2019

Checked and approved by :



Alexis St-Gelais, M. Sc., chimiste 2013-174

Note: This report may not be published, including online, without the written consent from Laboratoire PhytoChemia.

This report is digitally signed, it is only considered valid if the digital signature is intact.

PHYSICOCHEMICAL DATA

Physical aspect: Faintly yellow liquid

Refractive index: 1.4793 ± 0.0003 (20 °C)

CONCLUSION

No adulterant, contaminant or diluent has been detected using this method.

ANALYSIS SUMMARY

Identification	DB-5 (%)	DB-WAX (%)	Classe
2-Methyl-3-buten-2-ol	0.01	0.01	Aliphatic alcohol
Toluene	tr	0.25*	Simple phenolic
Octane	0.01	0.02	Alkane
5-Methyl-3-hexanone	0.03	0.03*	Aliphatic ketone
4-Methyl-3-hexanone	0.02	0.02	Aliphatic ketone
Ethyl 2-methylbutyrate	0.01	tr	Aliphatic ester
Ethyl isovalerate	tr	[0.03]*	Aliphatic ester
Styrene	tr	2.44*	Simple phenolic
Bornylene	0.01	tr	Monoterpene
Hashishene	0.02	33.53*	Monoterpene
Tricyclene	0.05	0.06	Monoterpene
α -Thujene	0.21	[0.25]*	Monoterpene
α -Pinene	33.41	[33.53]*	Monoterpene
α -Fenchene	0.34*	0.08	Monoterpene
Camphene	[0.34]*	0.27	Monoterpene
Thuja-2,4(10)-diene	0.02	0.12*	Monoterpene
6-Methyl-2-heptanone	0.01	3.68*	Aliphatic ketone
Sabinene	15.16*	[0.12]*	Monoterpene
β -Pinene	[15.16]*	15.21	Monoterpene
Octen-3-ol	0.02	0.01	Aliphatic alcohol
Myrcene	1.09	1.09	Monoterpene
Pseudolimonene	0.03*	0.03	Monoterpene
α -Phellandrene	[0.03]*	0.03	Monoterpene
Δ^3 -Carene	0.12	0.13	Monoterpene
α -Terpinene	0.11	0.11	Monoterpene
para-Cymene	0.79	0.80	Monoterpene
1,8-Cineole	12.87*	0.15*	Monoterpenic ether
β -Phellandrene	[12.87]*	[0.15]*	Monoterpene
Limonene	[12.87]*	12.83	Monoterpene
(Z)- β -Ocimene	3.36	[3.68]*	Monoterpene
2-Heptyl acetate	0.03	0.03	Aliphatic ester
(E)- β -Ocimene	1.34	1.36	Monoterpene
γ -Terpinene	2.69	[2.44]*	Monoterpene
cis-Linalool oxide (fur.)	0.01	0.01	Monoterpenic alcohol
Octanol	0.01	0.04	Aliphatic alcohol
α -Pinene oxide analog	0.01	0.03*	Monoterpenic ether
para-Cymenene	0.28*	0.01	Monoterpene
Terpinolene	[0.28]*	0.27	Monoterpene
α -Pinene oxide	0.02	[0.03]*	Monoterpenic ether
Linalool	0.25	0.29*	Monoterpenic alcohol
endo-Fenchol	0.04	3.01*	Monoterpenic alcohol
Octen-3-yl acetate	0.02	0.03	Aliphatic ester
allo-Ocimene	0.10	0.11	Monoterpene
trans-Pinocarveol	0.07	0.36*	Monoterpenic alcohol
Camphene hydrate	0.11	0.38*	Monoterpenic alcohol
Borneol	0.03	0.46*	Monoterpenic alcohol
Ethyl benzoate	0.01	0.18*	Phenolic ester
Terpinen-4-ol	0.19	0.20*	Monoterpenic alcohol

Methyl salicylate	0.03*	[6.78]*	Phenolic ester
para-Cymen-8-ol	[0.03]*	0.02	Monoterpenic alcohol
α -Terpineol	0.30	[0.46]*	Monoterpenic alcohol
Myrtenol	0.03	0.03	Monoterpenic alcohol
(3Z,5E)-2,6-Dimethylocta-3,5,7-trien-2-ol?	0.02	0.24	Monoterpenic alcohol
(3E,5E)-2,6-Dimethylocta-3,5,7-trien-2-ol	0.01	0.01	Monoterpenic alcohol
<i>trans</i> -Carveol	0.01	0.02	Monoterpenic alcohol
Citronellol	0.02	0.02	Monoterpenic alcohol
2-Nonyl acetate	0.01	0.02	Aliphatic ester
Unknown	0.04	0.18*	Unknown
<i>trans</i> -Ascaridole glycol	0.01	0.02	Monoterpenic alcohol
Unknown	0.01	0.18*	Oxygenated monoterpene
Bornyl acetate	0.12	0.12	Monoterpenic ester
2-Undecanone	0.02	0.04	Aliphatic ketone
Bicycloelemene	0.03	0.09*	Sesquiterpene
Unknown	0.25*	0.04	Sesquiterpene
α -Cubebene	[0.25]*	0.23	Sesquiterpene
Citronellyl acetate	0.13	0.15	Monoterpenic ester
Cyclosativene II	0.01	0.01	Sesquiterpene
α -Ylangene	0.09	[0.09]*	Sesquiterpene
α -Copaene	0.64	0.66	Sesquiterpene
β -Bourbonene	0.18	[0.18]*	Sesquiterpene
β -Cubebene	0.02	0.01	Sesquiterpene
7-epi-Sesquithujene	0.19*	0.04	Sesquiterpene
β -Elemene	[0.19]*	[3.01]*	Sesquiterpene
α -Funebrene	0.06	0.08	Sesquiterpene
4-Phenyl-2-butyl acetate	0.02		Phenylbutanoid ester
α -Cedrene	0.28*	[0.29]*	Sesquiterpene
α -Gurjunene	[0.28]*	0.15	Sesquiterpene
β -Caryophyllene	2.82	[3.01]*	Sesquiterpene
β -Gurjunene	0.03	0.04	Sesquiterpene
β -Copaene	0.20	0.19	Sesquiterpene
α -Maaliene	0.04	[0.20]*	Sesquiterpene
<i>trans</i> - α -Bergamotene	0.43*	[3.01]*	Sesquiterpene
Selina-5,11-diene	[0.43]*	0.08	Sesquiterpene
Aromadendrene	[0.43]*	[0.38]*	Sesquiterpene
<i>cis</i> -Muurolo-3,5-diene	0.05	0.03	Sesquiterpene
Unknown	0.17	0.17	Sesquiterpene
α -Humulene	0.51	0.43	Sesquiterpene
allo-Aromadendrene	0.44	0.47	Sesquiterpene
(<i>E</i>)- β -Farnesene	0.56*	0.42	Sesquiterpene
<i>cis</i> -Muurolo-4(15),5-diene	[0.56]*	[0.18]*	Sesquiterpene
<i>trans</i> -Cadina-1(6),4-diene	0.40	[0.36]*	Sesquiterpene
γ -Muurolole	1.28	1.31	Sesquiterpene
Germacrene D	0.35*	0.21	Sesquiterpene
α -Amorphene	[0.35]*	0.22	Sesquiterpene
β -Selinene	0.72	0.78	Sesquiterpene
α -Curcumene	0.05	0.32*	Sesquiterpene
α -Selinene	0.94*	0.59	Sesquiterpene
γ -Amorphene	[0.94]*		Sesquiterpene

α -Muurolene	1.60	1.60	Sesquiterpene
β -Curcumene	2.33*	0.33	Sesquiterpene
γ -Cadinene	[2.33]*	6.78	Sesquiterpene
(3E,6E)- α -Farnesene	[2.33]*	0.10	Sesquiterpene
Zonarene	5.22*	[6.78]*	Sesquiterpene
δ -Cadinene	[5.22]*	[6.78]*	Sesquiterpene
<i>trans</i> -Cadina-1,4-diene	0.20	[0.32]*	Sesquiterpene
α -Cadinene	0.35	0.35	Sesquiterpene
α -Calacorene	0.09	0.08	Sesquiterpene
Isocaryophyllene epoxide B	0.05	0.03	Sesquiterpenic ether
β -Calacorene	0.01	0.05*	Sesquiterpene
(E)-Nerolidol	0.10	0.17*	Sesquiterpenic alcohol
Germacrene D-4-ol	0.17*	0.14	Sesquiterpenic alcohol
Spathulenol	[0.17]*	0.13	Sesquiterpenic alcohol
Caryophyllene oxide	0.20*	[0.18]*	Sesquiterpenic ether
Caryophyllene oxide isomer	[0.20]*	[0.05]*	Sesquiterpenic ether
Unknown	0.04		Oxygenated sesquiterpene
Viridiflorol	0.03	0.05	Sesquiterpenic alcohol
Ledol?	0.09	0.08	Oxygenated sesquiterpene
Unknown	0.07		Oxygenated sesquiterpene
10-epi-Cubenol	0.13		Sesquiterpenic alcohol
1-epi-Cubenol	0.16	[0.17]*	Sesquiterpenic alcohol
γ -Eudesmol	0.07	0.35*	Sesquiterpenic alcohol
τ -Muurolol	0.74*	0.33	Sesquiterpenic alcohol
τ -Cadinol	[0.74]*	[0.35]*	Sesquiterpenic alcohol
α -Muurolol	0.15	0.14	Sesquiterpenic alcohol
β -Eudesmol	0.09	0.09	Sesquiterpenic alcohol
α -Cadinol	0.41	0.40	Sesquiterpenic alcohol
<i>cis</i> -Calamene-10-ol	0.03	0.03	Sesquiterpenic alcohol
<i>trans</i> -Calamene-10-ol	0.02	0.02	Sesquiterpenic alcohol
α -Bisabolol	0.10	0.09	Sesquiterpenic alcohol
Unknown	0.05		Oxygenated sesquiterpene
Unknown	0.03		Oxygenated sesquiterpene
Unknown	0.05	0.03	Oxygenated sesquiterpene
Total identified	96.56%	96.44%	

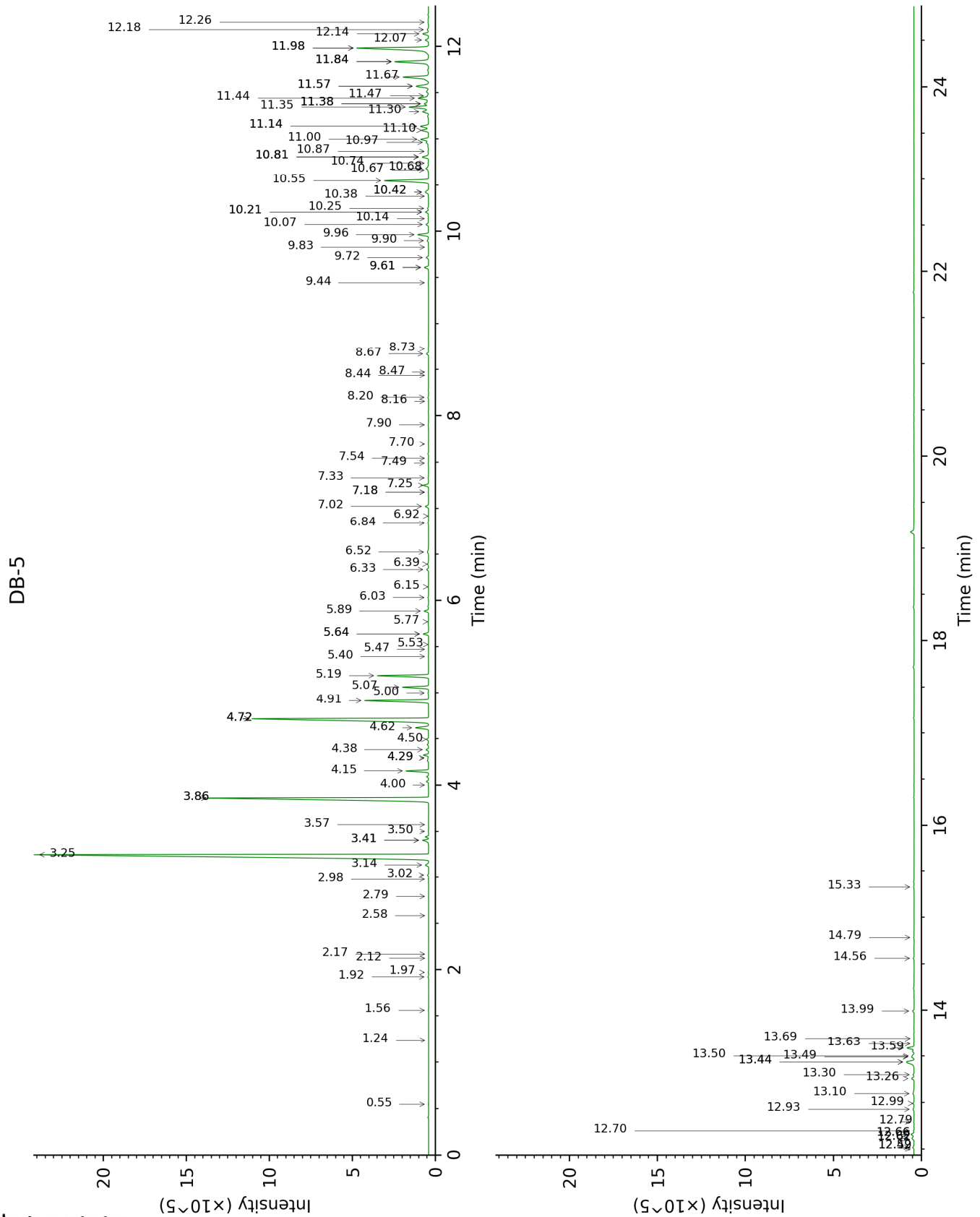
*: Two or more compounds are coeluting on this column

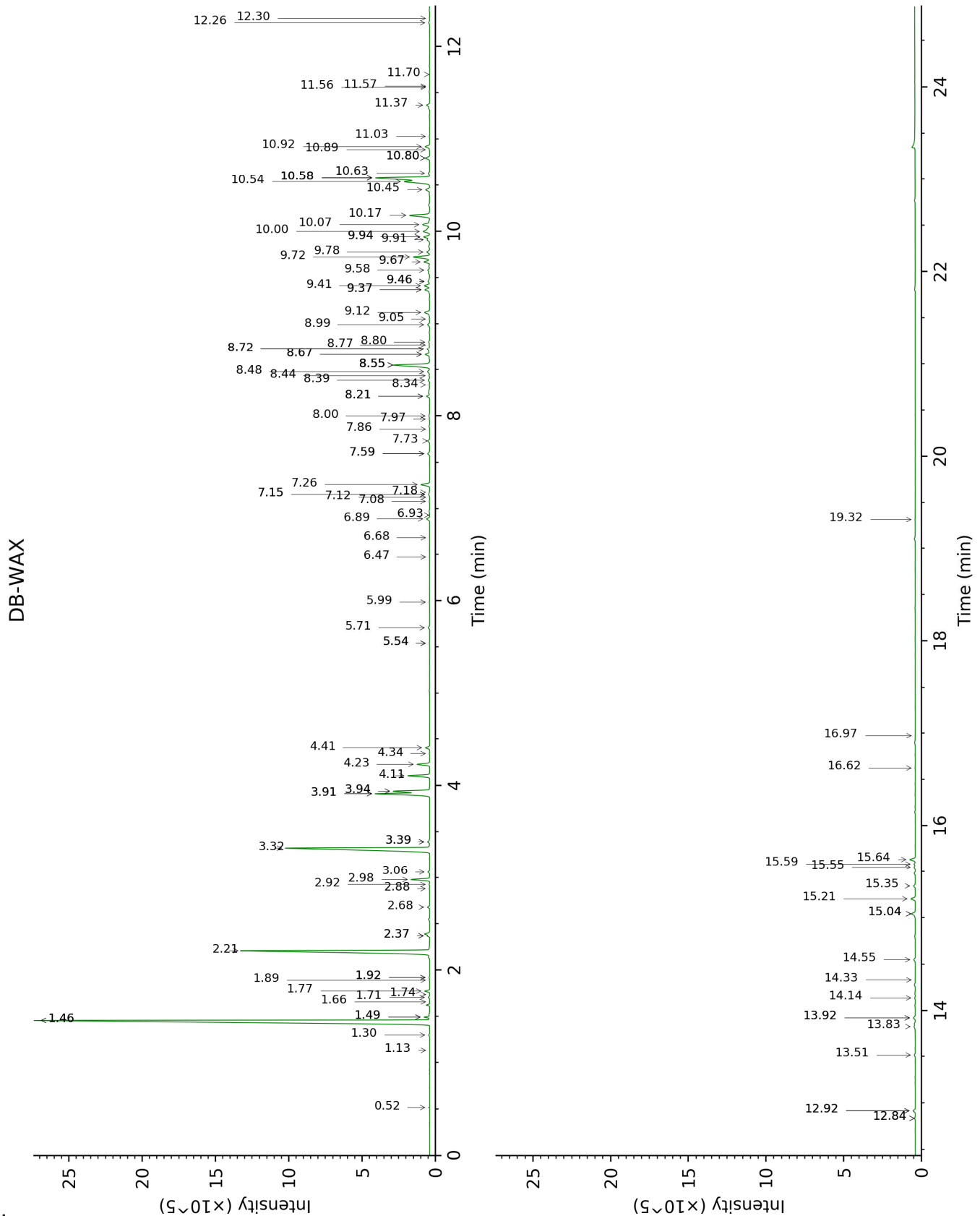
[xx]: Duplicate percentage due to coelutions, not taken account in the identified total

tr: The compound has been detected below 0.005% of total signal.

Note: no correction factor was applied

This page was intentionally left blank. The following pages present the complete data of the analysis.





FULL ANALYSIS DATA

Identification	Column DB-5			Column DB-WAX		
	R.T	R.I	%	R.T	R.I	%
2-Methyl-3-buten-2-ol	0.55	608	0.01	1.66	1015	0.01
Toluene	1.24	757	tr	1.49*	999	0.25
Octane	1.56	801	0.01	0.52	783	0.02
5-Methyl-3-hexanone	1.92	831	0.03	1.92*	1041	0.03
4-Methyl-3-hexanone	1.97	835	0.02	1.89	1038	0.02
Ethyl 2-methylbutyrate	2.12	847	0.01	1.74	1023	tr
Ethyl isovalerate	2.17	851	tr	1.92*	1041	[0.03]
Styrene	2.58	885	tr	3.94*	1207	2.44
Bornylene	2.79	902	0.01	1.13	944	tr
Hashishene	2.98	914	0.02	1.46*	996	33.53
Tricyclene	3.02	917	0.05	1.30	972	0.06
α -Thujene	3.14	925	0.21	1.49*	999	[0.25]
α -Pinene	3.25	932	33.41	1.46*	996	[33.53]
α -Fenchene	3.41*	942	0.34	1.71	1020	0.08
Camphene	3.41*	942	[0.34]	1.78	1027	0.27
Thuja-2,4(10)-diene	3.50	949	0.02	2.37*	1085	0.12
6-Methyl-2-heptanone	3.57	954	0.01	3.91*	1205	3.68
Sabinene	3.86*	972	15.16	2.37*	1085	[0.12]
β -Pinene	3.86*	972	[15.16]	2.21	1069	15.21
Octen-3-ol	4.00	982	0.02	6.93	1422	0.01
Myrcene	4.15	992	1.09	2.98	1134	1.09
Pseudolimonene	4.29*	1001	0.03	2.92	1130	0.03
α -Phellandrene	4.29*	1001	[0.03]	2.88	1126	0.03
Δ^3 -Carene	4.38	1007	0.12	2.68	1111	0.13
α -Terpinene	4.50	1014	0.11	3.06	1140	0.11
para-Cymene	4.62	1022	0.79	4.23	1227	0.80
1,8-Cineole	4.72*	1028	12.87	3.39*	1166	0.15
β -Phellandrene	4.72*	1028	[12.87]	3.39*	1166	[0.15]
Limonene	4.72*	1028	[12.87]	3.32	1160	12.83
(Z)- β -Ocimene	4.91	1040	3.36	3.91*	1205	[3.68]
2-Heptyl acetate	5.00	1046	0.03	4.34	1236	0.03
(E)- β -Ocimene	5.06	1050	1.34	4.10	1218	1.36
γ -Terpinene	5.19	1058	2.69	3.94*	1207	[2.44]
cis-Linalool oxide (fur.)	5.40	1071	0.01	6.68	1403	0.01
Octanol	5.47	1076	0.01	8.34	1527	0.04
α -Pinene oxide analog	5.53	1079	0.01	5.54*	1322	0.03
para-Cymenene	5.64*	1086	0.28	6.47	1388	0.01
Terpinolene	5.64*	1086	[0.28]	4.41	1240	0.27
α -Pinene oxide	5.77	1094	0.02	5.54*	1322	[0.03]
Linalool	5.89	1102	0.25	8.21*†	1518	0.29

endo-Fenchol	6.03	1111	0.04	8.55*	1544	3.01
Octen-3-yl acetate	6.15	1118	0.02	5.98	1353	0.03
allo-Ocimene	6.33	1130	0.10	5.71	1334	0.11
<i>trans</i> -Pinocarveol	6.39	1134	0.07	9.37*	1607	0.36
Camphene hydrate	6.52	1143	0.11	8.67*†	1552	0.38
Borneol	6.84	1163	0.03	9.94*	1653	0.46
Ethyl benzoate	6.92	1168	0.01	9.46*	1614	0.18
Terpinen-4-ol	7.02	1175	0.19	8.72*	1557	0.20
Methyl salicylate	7.18*	1185	0.03	10.58*†	1705	[6.78]
para-Cymen-8-ol	7.18*	1185	[0.03]	11.70	1800	0.02
α-Terpineol	7.25	1190	0.30	9.94*	1653	[0.46]
Myrtenol	7.33	1195	0.03	11.03	1744	0.03
(3 <i>Z</i> ,5 <i>E</i>)-2,6-Dimethylocta-3,5,7-trien-2-ol?	7.49	1205	0.02	11.37	1772	0.24
(3 <i>E</i> ,5 <i>E</i>)-2,6-Dimethylocta-3,5,7-trien-2-ol	7.54	1209	0.01	11.56	1788	0.01
<i>trans</i> -Carveol	7.70	1219	0.01	11.57	1789	0.02
Citronellol	7.90	1233	0.02	10.89	1732	0.02
2-Nonyl acetate	8.16	1251	0.01	7.18	1440	0.02
Unknown [m/z 68, 43 (71), 82 (59), 67 (52), 95 (24), 81 (24)...]	8.20	1254	0.04	7.59*	1471	0.18
<i>trans</i> -Ascaridole glycol	8.44	1270	0.01	14.33	2041	0.02
Unknown [m/z 41, 43 (84), 72 (81), 97 (90), 95 (60)... 150 (4)]	8.47	1272	0.01	12.92*	1908	0.18
Bornyl acetate	8.67	1286	0.12	8.39	1531	0.12
2-Undecanone	8.73	1290	0.02	8.77	1561	0.04
Bicycloelemene	9.44	1335	0.03	7.15*	1438	0.09
Unknown [m/z 95, 147 (61), 96 (39), 93 (37), 94 (37)... 204 (4)]	9.61*	1346	0.25	7.08	1433	0.04
α-Cubebene	9.61*	1346	[0.25]	6.89	1419	0.23
Citronellyl acetate	9.72	1354	0.13	9.58	1624	0.15
Cyclosativene II	9.83	1362	0.01	7.12	1436	0.01
α-Ylangene	9.90	1367	0.09	7.15*	1438	[0.09]
α-Copaene	9.96	1372	0.64	7.26	1446	0.66
β-Bourbonene	10.07	1379	0.18	7.59*	1471	[0.18]
β-Cubebene	10.14	1384	0.02	7.86	1490	0.01
7-epi-Sesquithujene	10.21*	1389	0.19	7.97	1499	0.04
β-Elemene	10.21*	1389	[0.19]	8.55*	1544	[3.01]

α-Funebrene	10.25	1392	0.06	8.00	1501	0.08
4-Phenyl-2-butyl acetate	10.38	1401	0.02			
α-Cedrene	10.42*	1404	0.28	8.21*†	1518	[0.29]
α-Gurjunene	10.42*	1404	[0.28]	7.73	1481	0.15
β-Caryophyllene	10.55	1414	2.82	8.55*	1544	[3.01]
β-Gurjunene	10.67	1422	0.03	8.44	1535	0.04
β-Copaene	10.68	1424	0.20	8.48	1538	0.19
α-Maaliene	10.74	1428	0.04	8.72*	1557	[0.20]
<i>trans</i> -α-Bergamotene	10.81*	1433	0.43	8.55*	1544	[3.01]
Selina-5,11-diene	10.81*	1433	[0.43]	8.80	1563	0.08
Aromadendrene	10.81*	1433	[0.43]	8.67*†	1552	[0.38]
<i>cis</i> -Muurolo-3,5-diene	10.87	1438	0.05	9.05	1582	0.03
Unknown [m/z 91, 161 (92), 105 (85), 119 (63), 133 (53), 79 (49), 204 (46)]	10.97	1445	0.17	8.99	1578	0.17
α-Humulene	11.00	1447	0.51	9.41	1611	0.43
allo-Aromadendrene	11.10	1454	0.44	9.12	1588	0.47
(<i>E</i>)-β-Farnesene	11.14*	1458	0.56	9.67	1632	0.42
<i>cis</i> -Muurolo-4(15),5-diene	11.14*	1458	[0.56]	9.46*	1614	[0.18]
<i>trans</i> -Cadina-1(6),4-diene	11.30	1470	0.40	9.37*	1607	[0.36]
γ-Muurolole	11.35	1473	1.28	9.72	1636	1.31
Germacrene D	11.38*	1476	0.35	9.91	1651	0.21
α-Amorphene	11.38*	1476	[0.35]	9.78	1640	0.22
β-Selinene	11.44	1480	0.72	10.00	1658	0.78
ar-Curcumene	11.47	1482	0.05	10.80*	1724	0.32
α-Selinene	11.57*	1490	0.94	10.07	1664	0.59
γ-Amorphene	11.57*	1490	[0.94]			
α-Muurolole	11.67	1497	1.60	10.17	1672	1.60
β-Curcumene	11.84*	1510	2.33	10.45	1694	0.33
γ-Cadinene	11.84*	1510	[2.33]	10.54†	1702	6.78
(3 <i>E</i> ,6 <i>E</i>)-α-Farnesene	11.84*	1510	[2.33]	10.63	1710	0.10
Zonarene	11.98*	1522	5.22	10.58*†	1705	[6.78]
δ-Cadinene	11.98*	1522	[5.22]	10.58*†	1705	[6.78]
<i>trans</i> -Cadina-1,4-diene	12.07	1529	0.20	10.80*	1724	[0.32]
α-Cadinene	12.14	1534	0.35	10.92	1734	0.35
α-Calacorene	12.18	1537	0.09	12.26	1850	0.08
Isocaryophyllene epoxide B	12.26	1544	0.05	12.30	1854	0.03
β-Calacorene	12.49	1562	0.01	12.84*	1901	0.05
(<i>E</i>)-Nerolidol	12.52	1564	0.10	13.92*	2002	0.17
Germacrene D-	12.62*	1572	0.17	13.83	1992	0.14

4-ol						
Spathulenol	12.62*	1572	[0.17]	14.55	2062	0.13
Caryophyllene oxide	12.66*	1575	0.20	12.92*	1908	[0.18]
Caryophyllene oxide isomer	12.66*	1575	[0.20]	12.84*	1901	[0.05]
Unknown [m/z 109, 43 (95), 81 (81), 93 (76), 69 (75), 95 (74), 107 (71)... 204 (22), 220 (6)]	12.70	1578	0.04			
Viridiflorol	12.79	1586	0.03	14.14	2022	0.05
Ledol?	12.93	1596	0.09	13.51	1963	0.08
Unknown [m/z 149, 43 (95), 93 (84), 177 (66), 109 (62), 67 (60)...220 (11)]	12.99	1601	0.07			
10-epi-Cubenol	13.10	1610	0.13			
1-epi-Cubenol	13.26	1623	0.16	13.92*	2002	[0.17]
γ-Eudesmol	13.30	1626	0.07	15.04*	2110	0.35
τ-Muurolol	13.44*	1638	0.74	15.21	2126	0.33
τ-Cadinol	13.44*	1638	[0.74]	15.04*	2110	[0.35]
α-Muurolol	13.49	1642	0.15	15.34	2140	0.14
β-Eudesmol	13.50	1643	0.09	15.59	2164	0.09
α-Cadinol	13.59	1650	0.41	15.64	2169	0.40
cis-Calamenen-10-ol	13.63	1654	0.03	16.62	2271	0.03
trans-Calamenen-10-ol	13.69	1659	0.02	16.97	2308	0.02
α-Bisabolol	13.99	1684	0.10	15.55	2161	0.09
Unknown [m/z 91, 175 (93), 105 (76), 79 (73), 133 (69), 107 (60)...218 (33)]	14.56	1732	0.05			
Unknown [m/z 91, 177 (75), 79 (68), 105 (65), 93 (62), 159 (60)...220 (16)]	14.78	1752	0.03			
Unknown [m/z 43, 41 (72), 95 (69), 81 (66), 67 (55), 55 (52), 79 (52), 69 (50)... 238 (1)]	15.33	1799	0.05	19.32	2570	0.03
Total identified		96.56%			96.44%	
Total reported		97.02%			96.68%	

*: Two or more compounds are coeluting on this column

[xx]: Duplicate percentage due to coelutions, not taken account in the identified total

†: Peaks apexes were resolved, but peaks overlapped and were summed for analysis

tr: The compound has been detected below 0.005% of total signal.

Note: no correction factor was applied

R.T.: Retention time (minutes)

R.I.: Retention index