

Date : April 26, 2018

CERTIFICATE OF ANALYSIS - GC PROFILING

SAMPLE IDENTIFICATION

Internal code : 18D17-PTH2-1-CC

Customer identification : Rhododendron - Nepal - RJ010072R

Type : Essential oil

Source : *Rhododendron anthopogon*

Customer : Plant Therapy


ANALYSIS

Method: PC-PA-014-17J19 - Analysis of the composition of an essential oil, or other volatile liquid, by FAST GC-FID (in French); identifications validated by GC-MS.

Analyst : Sylvain Mercier, M. Sc., Chimiste

Analysis date : April 23, 2018

Checked and approved by :



Alexis St-Gelais, M. Sc., chimiste 2013-174

Note: This report may not be published, including online, without the written consent from Laboratoire PhytoChemia.

This report is digitally signed, it is only considered valid if the digital signature is intact.

PHYSICOCHEMICAL DATA

Physical aspect: Faintly yellow liquid

Refractive index: 1.4813 ± 0.0003 (20 °C)

CONCLUSION

No adulterant, contaminant or diluent has been detected using this method.

ANALYSIS SUMMARY

Identification	DB-5 (%)	DB-WAX (%)	Classe
2-Methyl-3-buten-2-ol	tr	tr	Aliphatic alcohol
Toluene	tr	0.01	Simple phenolic
Octane	0.02	0.02	Alkane
5-Methyl-3-hexanone	0.04	0.04	Aliphatic ketone
4-Methyl-3-hexanone	0.02	0.03*	Aliphatic ketone
Ethyl 2-methylbutyrate	0.01	0.08*	Aliphatic ester
Ethyl isovalerate	0.01	[0.03]*	Aliphatic ester
Styrene	0.01	0.01	Simple phenolic
Bornylene	0.01*	tr	Monoterpene
Nonane	[0.01]*	tr	Alkane
Tricyclene	0.05	0.05	Monoterpene
α -Thujene	0.22	0.22	Monoterpene
α -Pinene	28.45	28.50	Monoterpene
Camphene	0.41*	0.30	Monoterpene
α -Fenchene	[0.41]*	[0.08]*	Monoterpene
Thuja-2,4(10)-diene	tr	0.15*	Monoterpene
6-Methyl-2-heptanone	tr	5.70*	Aliphatic ketone
β -Pinene	12.99*	12.92	Monoterpene
Sabinene	[12.99]*	[0.15]*	Monoterpene
Octen-3-ol	0.01	0.31*	Aliphatic alcohol
Myrcene	1.78	1.80	Monoterpene
α -Phellandrene	0.05	0.05	Monoterpene
Δ^3 -Carene	0.15	0.15	Monoterpene
α -Terpinene	0.17	0.18	Monoterpene
para-Cymene	0.69	0.69	Monoterpene
β -Phellandrene	9.98*	0.16	Monoterpene
1,8-Cineole	[9.98]*	0.02	Monoterpenic ether
Limonene	[9.98]*	9.86	Monoterpene
(Z)- β -Ocimene	5.03	[5.70]*	Monoterpene
2-Heptyl acetate	0.04	0.04	Aliphatic ester
(E)- β -Ocimene	0.95	0.96	Monoterpene
γ -Terpinene	2.02	1.43	Monoterpene
Octanol	0.01	0.01	Aliphatic alcohol
α -Pinene oxide analog	0.01	0.01	Monoterpenic ether
Terpinolene	0.42*	0.40	Monoterpene
para-Cymenene	[0.42]*	0.02	Monoterpene
Ethyl sorbate	0.04		Aliphatic ester
Linalool	0.30	0.29	Monoterpenic alcohol
endo-Fenchol	0.05	3.58*	Monoterpenic alcohol
Octen-3-yl acetate	0.01	0.01	Aliphatic ester
allo-Ocimene	0.12	0.11	Monoterpene
trans-Pinocarveol	0.04	0.62*	Monoterpenic alcohol
2-Octyl acetate	0.04		Aliphatic ester
Camphene hydrate	0.06	0.07	Monoterpenic alcohol
Borneol	0.04	0.63*	Monoterpenic alcohol
Ethyl benzoate	0.01	0.21*	Phenolic ester
Terpinen-4-ol	0.26	0.74*	Monoterpenic alcohol
para-Cymen-8-ol	0.02	0.01	Monoterpenic alcohol

α -Terpineol	0.40	[0.63]*	Monoterpenic alcohol
Methyl salicylate	0.02*	0.21*	Phenolic ester
Myrtenol	[0.02]*	0.01	Monoterpenic alcohol
(3Z,5E)-2,6-Dimethylocta-3,5,7-trien-2-ol?	0.03	0.27	Monoterpenic alcohol
(3E,5E)-2,6-Dimethylocta-3,5,7-trien-2-ol	0.06	0.06	Monoterpenic alcohol
<i>trans</i> -Carveol	0.01	0.01	Monoterpenic alcohol
Citronellol	0.03	0.41*	Monoterpenic alcohol
2-Nonyl acetate	0.02		Aliphatic ester
Unknown	0.04		Unknown
<i>trans</i> -Ascaridole glycol	0.01	0.01	Monoterpenic alcohol
Unknown	0.01	0.15*	Oxygenated monoterpene
Bornyl acetate	0.17	0.17	Monoterpenic ester
2-Undecanone	0.02	0.06	Aliphatic ketone
Bicycloelemene	0.03	0.04	Sesquiterpene
α -Cubebene	0.36	[0.31]*	Sesquiterpene
Unknown	0.04		Sesquiterpene
Citronellyl acetate	0.20	0.20	Monoterpenic ester
Cyclosativene I	0.01	0.01	Sesquiterpene
Cyclosativene II	0.01	0.02	Sesquiterpene
α -Ylangene	0.13	0.12	Sesquiterpene
α -Copaene	0.85	0.85	Sesquiterpene
β -Bourbonene	0.23	0.22	Sesquiterpene
β -Elemene	0.25	[3.58]*	Sesquiterpene
α -Funebrene	0.08*	0.05	Sesquiterpene
7-epi-Sesquithujene	[0.08]*	0.05	Sesquiterpene
α -Gurjunene	0.35	0.22	Sesquiterpene
α -Cedrene	[0.35]	0.03	Sesquiterpene
β -Caryophyllene	3.41	[3.58]*	Sesquiterpene
β -Copaene	0.22	0.28*	Sesquiterpene
β -Gurjunene	0.05	[0.28]*	Sesquiterpene
α -Maaliene	0.04	[0.74]*	Sesquiterpene
Aromadendrene	0.54	[0.74]*	Sesquiterpene
Selina-5,11-diene	0.06	0.05	Sesquiterpene
<i>cis</i> -Muurolo-3,5-diene	0.11	0.07	Sesquiterpene
Unknown	0.26	0.21	Sesquiterpene
α -Humulene	0.53	0.51	Sesquiterpene
allo-Aromadendrene	0.53	0.60	Sesquiterpene
<i>cis</i> -Muurolo-4(15),5-diene	0.26	[0.21]*	Sesquiterpene
(<i>E</i>)- β -Farnesene	0.92	0.93	Sesquiterpene
<i>trans</i> -Cadina-1(6),4-diene	0.66	[0.62]*	Sesquiterpene
γ -Muurolole	1.83	1.79	Sesquiterpene
α -Amorphene	0.30	0.31	Sesquiterpene
β -Selinene	1.13*	0.74	Sesquiterpene
ar-Curcumene	[1.13]*	[0.41]*	Sesquiterpene
γ -Amorphene	0.21	0.25	Sesquiterpene
α -Selinene	1.41	0.83	Sesquiterpene
α -Muurolole	2.31	2.33	Sesquiterpene
β -Curcumene	0.10	0.09	Sesquiterpene
(3E,6E)- α -Farnesene	3.39*	[0.21]*	Sesquiterpene
γ -Cadinene	[3.39]*	3.36	Sesquiterpene

δ-Cadinene	7.22*	6.40*	Sesquiterpene
Zonarene	[7.22]*	[6.40]*	Sesquiterpene
<i>trans</i> -Cadina-1,4-diene	0.30	[0.41]*	Sesquiterpene
α-Cadinene	0.49	0.51	Sesquiterpene
α-Calacorene	0.11	0.11	Sesquiterpene
Isocaryophyllene epoxide B	0.04	0.02	Sesquiterpenic ether
Palustrol	0.04	0.07	Sesquiterpenic alcohol
(<i>E</i>)-Nerolidol	0.14	0.25*	Sesquiterpenic alcohol
Spathulenol	0.19	0.15	Sesquiterpenic alcohol
Caryophyllene oxide	0.18*	[0.15]*	Sesquiterpenic ether
Caryophyllene oxide isomer	[0.18]*	0.04	Sesquiterpenic ether
Unknown	0.05		Oxygenated sesquiterpene
Unknown	0.12		Unknown
Unknown	0.07		Oxygenated sesquiterpene
10-epi-Cubenol	0.14		Sesquiterpenic alcohol
1-epi-Cubenol	0.22	[0.25]*	Sesquiterpenic alcohol
γ-Eudesmol	0.08	0.05	Sesquiterpenic alcohol
τ-Cadinol	1.03*	0.42	Sesquiterpenic alcohol
τ-Muurolol	[1.03]*	0.46	Sesquiterpenic alcohol
α-Muurolol	0.31	0.18	Sesquiterpenic alcohol
β-Eudesmol	0.13	0.13	Sesquiterpenic alcohol
α-Cadinol	0.57	0.56	Sesquiterpenic alcohol
<i>cis</i> -Calamene-10-ol	0.02	0.03	Sesquiterpenic alcohol
<i>trans</i> -Calamene-10-ol	0.01	0.01	Sesquiterpenic alcohol
α-Bisabolol	0.14	0.12	Sesquiterpenic alcohol
Unknown	0.07		Oxygenated sesquiterpene
Unknown	0.05		Oxygenated sesquiterpene
Unknown	0.04		Oxygenated sesquiterpene
Total identified	97.19%	95.14%	

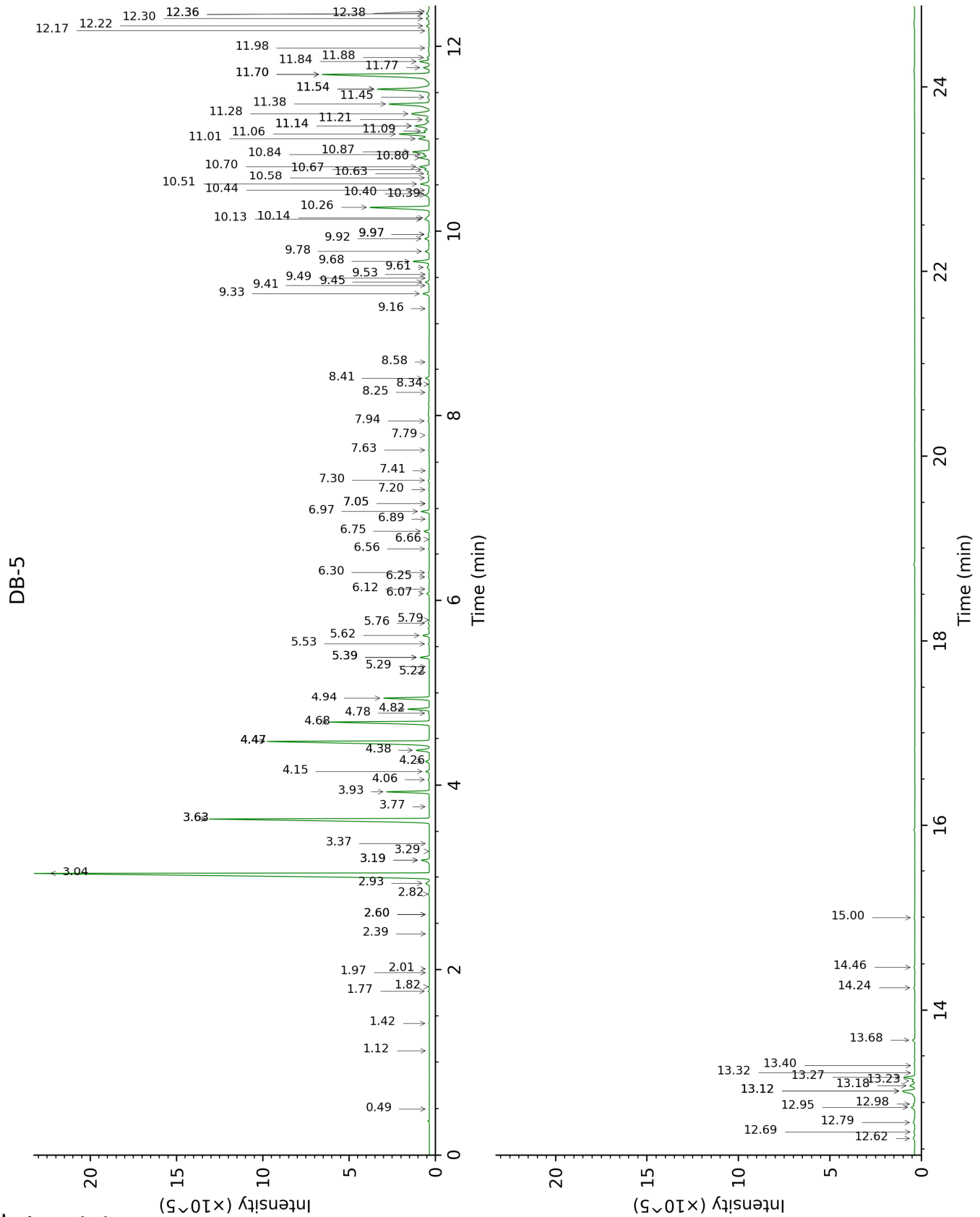
*: Two or more compounds are coeluting on this column

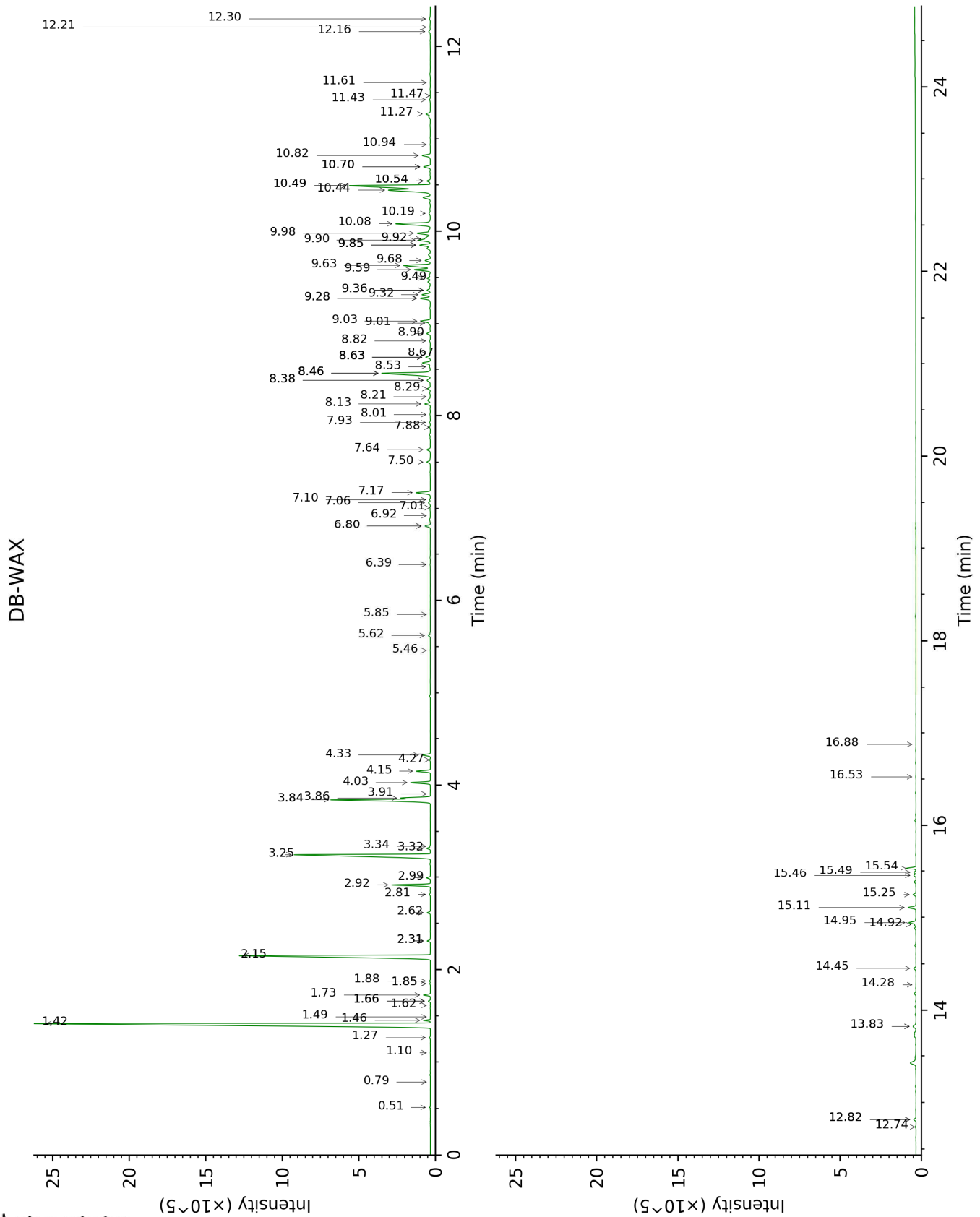
[xx]: Duplicate percentage due to coelutions, not taken account in the identified total

tr: The compound has been detected below 0.005% of total signal.

Note: no correction factor was applied

This page was intentionally left blank. The following pages present the complete data of the analysis.





FULL ANALYSIS DATA

Identification	Column DB-5			Column DB-WAX		
	R.T	R.I	%	R.T	R.I	%
2-Methyl-3-buten-2-ol	0.50	606	tr	1.62	1020	tr
Toluene	1.12	753	tr	1.49	1007	0.01
Octane	1.42	798	0.02	0.51	773	0.02
5-Methyl-3-hexanone	1.77	829	0.04	1.88	1046	0.04
4-Methyl-3-hexanone	1.82	833	0.02	1.85*	1043	0.03
Ethyl 2-methylbutyrate	1.97	846	0.01	1.66*	1024	0.08
Ethyl isovalerate	2.01	850	0.01	1.85*	1043	[0.03]
Styrene	2.39	882	0.01	3.91	1208	0.01
Bornylene	2.60*	900	0.01	1.10	946	tr
Nonane	2.60*	900	[0.01]	0.78	889	tr
Tricyclene	2.82	915	0.05	1.27	975	0.05
α -Thujene	2.93	923	0.22	1.46	1003	0.22
α -Pinene	3.04	930	28.45	1.42	1000	28.50
Camphene	3.19*	940	0.41	1.73	1031	0.30
α -Fenchene	3.19*	940	[0.41]	1.66*	1024	[0.08]
Thuja-2,4(10)-diene	3.29	947	tr	2.31*	1088	0.15
6-Methyl-2-heptanone	3.37	952	tr	3.84*	1204	5.70
β -Pinene	3.64*	970	12.99	2.15	1073	12.92
Sabinene	3.64*	970	[12.99]	2.31*	1088	[0.15]
Octen-3-ol	3.77	979	0.01	6.80*	1419	0.31
Myrcene	3.93	990	1.78	2.92	1136	1.80
α -Phellandrene	4.06	999	0.05	2.81	1128	0.05
Δ^3 -Carene	4.15	1004	0.15	2.62	1114	0.15
α -Terpinene	4.26	1011	0.17	2.99	1142	0.18
para-Cymene	4.38	1019	0.69	4.15	1224	0.69
β -Phellandrene	4.47*	1025	9.98	3.32	1166	0.16
1,8-Cineole	4.47*	1025	[9.98]	3.34	1168	0.02
Limonene	4.47*	1025	[9.98]	3.25	1161	9.86
(Z)- β -Ocimene	4.68	1038	5.03	3.84*	1204	[5.70]
2-Heptyl acetate	4.78	1044	0.04	4.27	1232	0.04
(E)- β -Ocimene	4.82	1047	0.95	4.03	1216	0.96
γ -Terpinene	4.94	1055	2.02	3.86	1205	1.43
Octanol	5.22	1073	0.01	8.21	1524	0.01
α -Pinene oxide analog	5.29	1077	0.01	5.46	1323	0.01
Terpinolene	5.39*	1083	0.42	4.33	1236	0.40
para-Cymenene	5.39*	1083	[0.42]	6.39	1389	0.02
Ethyl sorbate	5.53	1092	0.04			
Linalool	5.62	1098	0.30	8.13	1518	0.29
endo-Fenchol	5.76	1106	0.05	8.46*	1544	3.58
Octen-3-yl acetate	5.79	1109	0.01	5.85	1350	0.01

allo-Ocimene	6.07	1127	0.12	5.62	1334	0.11
<i>trans</i> -Pinocarveol	6.12	1130	0.04	9.28*	1608	0.62
2-Octyl acetate	6.25	1138	0.04			
Camphene hydrate	6.30	1142	0.06	8.53	1549	0.07
Borneol	6.56	1158	0.04	9.85*	1654	0.63
Ethyl benzoate	6.66	1165	0.01	9.36*	1615	0.21
Terpinen-4-ol	6.75	1170	0.26	8.63*†	1557	0.74
para-Cymen-8-ol	6.89	1179	0.02	11.61	1801	0.01
α-Terpineol	6.97	1185	0.40	9.85*	1654	[0.63]
Methyl salicylate	7.05*	1190	0.02	10.54*	1710	0.21
Myrtenol	7.05*	1190	[0.02]	10.94	1744	0.01
(3 <i>Z</i> ,5 <i>E</i>)-2,6-Dimethylocta-3,5,7-trien-2-ol?	7.20	1200	0.03	11.27	1772	0.27
(3 <i>E</i> ,5 <i>E</i>)-2,6-Dimethylocta-3,5,7-trien-2-ol	7.30	1206	0.06	11.43	1785	0.06
<i>trans</i> -Carveol	7.41	1213	0.01	11.47	1789	0.01
Citronellol	7.63	1228	0.03	10.70*	1724	0.41
2-Nonyl acetate	7.79	1239	0.02			
Unknown [m/z 68, 43 (71), 82 (59), 67 (52), 95 (24), 81 (24)...]	7.94	1250	0.04			
<i>trans</i> -Ascaridole glycol	8.25	1270	0.01	14.28	2045	0.01
Unknown [m/z 43, 43 (84), 72 (81), 97 (90), 95 (60)... 150 (4)]	8.34	1276	0.01	12.82*	1909	0.15
Bornyl acetate	8.41	1280	0.17	8.29	1531	0.17
2-Undecanone	8.58	1292	0.02	8.67	1560	0.06
Bicycloelemene	9.16	1333	0.03	7.10	1441	0.04
α-Cubebene	9.33	1345	0.36	6.80*	1419	[0.31]
Unknown [m/z 95, 147 (61), 96 (39), 93 (37), 94 (37)... 204 (4)]	9.41	1351	0.04			
Citronellyl acetate	9.45	1354	0.20	9.50	1625	0.20
Cyclosativene I	9.49	1357	0.01	6.92	1428	0.01
Cyclosativene II	9.53	1359	0.01	7.01	1434	0.02
α-Ylangene	9.61	1365	0.13	7.06	1438	0.12
α-Copaene	9.68	1369	0.85	7.17	1446	0.85
β-Bourbonene	9.78	1377	0.23	7.50	1471	0.22
β-Elemene	9.92	1387	0.25	8.46*	1544	[3.58]
α-Funebrene	9.97*	1390	0.08	7.93	1503	0.05
7-epi-Sesquithujene	9.97*	1390	[0.08]	7.88	1499	0.05
α-Gurjunene	10.13†	1402	0.35	7.64	1481	0.22

α-Cedrene	10.14†	1403	[0.35]	8.01	1509	0.03
β-Caryophyllene	10.26	1411	3.41	8.46*	1544	[3.58]
β-Copaene	10.39	1421	0.22	8.38*	1538	0.28
β-Gurjunene	10.40	1422	0.05	8.38*	1538	[0.28]
α-Maaliene	10.44	1425	0.04	8.63*†	1557	[0.74]
Aromadendrene	10.51	1430	0.54	8.63*†	1557	[0.74]
Selina-5,11-diene	10.58	1435	0.06	8.82	1571	0.05
cis-Muuro-la-3,5-diene	10.63	1439	0.11	9.01	1586	0.07
Unknown [m/z 91, 161 (92), 105 (85), 119 (63), 133 (53), 79 (49), 204 (46)]	10.67	1442	0.26	8.90	1578	0.21
α-Humulene	10.70	1445	0.53	9.32	1611	0.51
allo-Aromadendrene	10.80	1452	0.53	9.03	1588	0.60
cis-Muuro-la-4(15),5-diene	10.84	1454	0.26	9.36*	1615	[0.21]
(E)-β-Farnesene	10.86	1457	0.92	9.59	1632	0.93
trans-Cadina-1(6),4-diene	11.01	1467	0.66	9.28*	1608	[0.62]
γ-Muuro-lene	11.06	1471	1.83	9.63	1636	1.79
α-Amorphene	11.09	1473	0.30	9.68	1640	0.31
β-Selinene	11.14*	1478	1.13	9.90	1658	0.74
ar-Curcumene	11.14*	1478	[1.13]	10.70*	1724	[0.41]
γ-Amorphene	11.21	1483	0.21	9.92	1659	0.25
α-Selinene	11.28	1487	1.41	9.98	1664	0.83
α-Muuro-lene	11.38	1495	2.31	10.08	1672	2.33
β-Curcumene	11.45	1501	0.10	10.19	1682	0.09
(3E,6E)-α-Farnesene	11.54*	1508	3.39	10.54*	1710	[0.21]
γ-Cadinene	11.54*	1508	[3.39]	10.44	1702	3.36
δ-Cadinene	11.70*	1520	7.22	10.49*	1706	6.40
Zonarene	11.70*	1520	[7.22]	10.49*	1706	[6.40]
trans-Cadina-1,4-diene	11.77	1526	0.30	10.70*	1724	[0.41]
α-Cadinene	11.84	1531	0.49	10.82	1734	0.51
α-Calacorene	11.88	1534	0.11	12.16	1850	0.11
Isocaryophyllene epoxide B	11.98	1543	0.04	12.21	1854	0.02
Palustrol	12.17	1557	0.04	12.30	1862	0.07
(E)-Nerolidol	12.22	1561	0.14	13.83*	2002	0.25
Spathulenol	12.30	1568	0.19	14.45	2062	0.15
Caryophyllene oxide	12.36*	1572	0.18	12.82*	1909	[0.15]
Caryophyllene oxide isomer	12.36*	1572	[0.18]	12.74	1901	0.04
Unknown [m/z 109, 43 (95), 81 (81), 93 (76), 69	12.38	1574	0.05			

(75), 95 (74), 107 (71)... 204 (22), 220 (6)]						
Unknown [m/z 109, 43 (89), 122 (88), 69 (78), 107 (78), 81 (78)...]	12.62	1592	0.12			
Unknown [m/z 149, 43 (95), 93 (84), 177 (66), 109 (62), 67 (60)...220 (11)]	12.68	1598	0.07			
10-epi-Cubenol	12.79	1606	0.14			
1-epi-Cubenol	12.95	1620	0.22	13.83*	2002	[0.25]
γ-Eudesmol	12.98	1622	0.08	14.92	2108	0.05
τ-Cadinol	13.12*	1634	1.03	14.95	2110	0.42
τ-Muurolol	13.12*	1634	[1.03]	15.11	2126	0.46
α-Muurolol	13.18	1639	0.31	15.25	2140	0.18
β-Eudesmol	13.23	1643	0.13	15.46	2161	0.13
α-Cadinol	13.27	1646	0.57	15.54	2170	0.56
cis-Calamenen-10-ol	13.32	1650	0.02	16.53	2271	0.03
trans-Calamenen-10-ol	13.40	1657	0.01	16.88	2308	0.01
α-Bisabolol	13.68	1680	0.14	15.49	2164	0.12
Unknown [m/z 91, 175 (93), 105 (76), 79 (73), 133 (69), 107 (60)...218 (33)]	14.24	1728	0.07			
Unknown [m/z 91, 177 (75), 79 (68), 105 (65), 93 (62), 159 (60)...220 (16)]	14.46	1747	0.05			
Unknown [m/z 43, 41 (72), 95 (69), 81 (66), 67 (55), 55 (52), 79 (52), 69 (50)... 238 (1)]	15.00	1794	0.04			
Total identified		97.19%			95.14%	
Total reported		97.95%			95.36%	

*: Two or more compounds are coeluting on this column

[xx]: Duplicate percentage due to coelutions, not taken account in the identified total

†: Peaks apexes were resolved, but peaks overlapped and were summed for analysis

tr: The compound has been detected below 0.005% of total signal.

Note: no correction factor was applied

R.T.: Retention time (minutes)

R.I.: Retention index