

**Date :** January 21, 2019

**CERTIFICATE OF ANALYSIS – GC PROFILING**

**SAMPLE IDENTIFICATION**

**Internal code :** 19A18-PTH05-1-CC

**Customer identification :** Manuka - New Zealand - MF010288R

**Type :** Essential oil

**Source :** *Leptospermum scoparium* ct. Triketones

**Customer :** Plant Therapy

**ANALYSIS**

**Method:** PC-PA-014-17J19 - Analysis of the composition of an essential oil, or other volatile liquid, by FAST GC-FID (in French); identifications validated by GC-MS.

**Analyst :** Alexis St-Gelais, M. Sc., chimiste

**Analysis date :** January 21, 2019

Checked and approved by :

---

Alexis St-Gelais, M. Sc., chimiste 2013-174

*Note: This report may not be published, including online, without the written consent from Laboratoire PhytoChemia.*

*This report is digitally signed, it is only considered valid if the digital signature is intact.*

*PHYSICOCHEMICAL DATA*

**Physical aspect:** Light yellow liquid

**Refractive index:**  $1.5010 \pm 0.0003$  (20 °C)

*CONCLUSION*

No adulterant, contaminant or diluent has been detected using this method.

## ANALYSIS SUMMARY

Identification	DB-5 (%)	DB-WAX (%)	Classe
Isovaleral	tr	tr	Aliphatic aldehyde
2-Ethylfuran	tr	tr	Furan
2,4-Dimethyl-3-pentanone	0.01	0.01	Aliphatic ketone
Hexanal	tr	tr	Aliphatic aldehyde
Octane	0.01	0.01	Alkane
(2E)-Hexenal	0.01*	tr	Aliphatic aldehyde
Ethylbenzene	[0.01]*	0.02*	Simple phenolic
(3Z)-Hexenol	0.01	0.01*	Aliphatic alcohol
Styrene	0.01	tr	Simple phenolic
$\alpha$ -Thujene	0.02	0.03	Monoterpene
$\alpha$ -Pinene	0.96	0.98	Monoterpene
Camphene	0.01*	tr	Monoterpene
$\alpha$ -Fenchene	[0.01]*	tr	Monoterpene
Sabinene	0.14*	[0.02]*	Monoterpene
$\beta$ -Pinene	[0.14]*	0.13	Monoterpene
6-Methyl-5-hepten-2-one	0.01	0.01	Aliphatic ketone
2-Pentylfuran	tr	0.01	Furan
Myrcene	0.31	0.31	Monoterpene
$\alpha$ -Phellandrene	tr	tr	Monoterpene
(3Z)-Hexenyl acetate	0.03	0.03	Aliphatic ester
$\alpha$ -Terpinene	0.02	0.02	Monoterpene
Hexyl acetate	0.01	0.02	Aliphatic ester
para-Cymene	0.11	0.11	Monoterpene
Limonene	0.21*	0.09	Monoterpene
1,8-Cineole	[0.21]*	0.15	Monoterpenic ether
$\beta$ -Phellandrene	[0.21]*	tr	Monoterpene
(E)- $\beta$ -Ocimene	0.03	0.03	Monoterpene
$\gamma$ -Terpinene	0.12	0.11	Monoterpene
Unknown	0.01	0.12*	Oxygenated monoterpene
Octanol	0.02	0.01	Aliphatic alcohol
Terpinolene	0.04	0.04	Monoterpene
Linalool	0.05	0.05	Monoterpenic alcohol
2-Methylbutyl 2-methylbutyrate	0.02	0.04	Aliphatic ester
Nonanal	0.01	[0.01]*	Aliphatic aldehyde
Isoamyl isovalerate	0.08	[0.12]*	Aliphatic ester
Amyl isovalerate	0.04	[0.12]*	Aliphatic ester
3-Methyl-3-butenyl 2-methylbutyrate	0.01	0.02	Aliphatic ester
3-Methyl-3-butenyl isovalerate	0.15	0.15	Aliphatic ester
<i>trans</i> -Pinocarveol	0.01	0.01	Monoterpenic alcohol
Prenyl isovalerate	0.02	0.03	Aliphatic ester
Dimethyloctanedione isomer	0.02	3.91*	$\beta$ -Diketone
2,7-Dimethyl-3,5-octanedione	0.05	0.04	$\beta$ -Diketone
Terpinen-4-ol	0.05	0.04	Monoterpenic alcohol
$\alpha$ -Terpineol	0.05	0.05	Monoterpenic alcohol
2-Methylbutyl tiglate	0.09	0.09	Aliphatic ester
3-Methyl-3-butenyl tiglate	0.05		Aliphatic ester
Benzylacetone	0.02	0.02	Simple phenolic
Prenyl tiglate	0.05		Aliphatic ester

Geraniol	0.02	0.02	Monoterpenic alcohol
Geranial	0.01	0.69*	Monoterpenic aldehyde
Undec-(5Z)-en-2-one	0.05	6.63*	Aliphatic ketone
Benzyl isobutyrate	0.01	4.79*	Phenolic ester
Bicycloelemene	0.03	0.18*	Sesquiterpene
$\alpha$ -Cubebene	3.80	[3.91]*	Sesquiterpene
Longicyclene	0.02	[0.18]*	Sesquiterpene
Modhephene	0.19*	0.03	Sesquiterpene
$\alpha$ -Ylangene	[0.19]*	[0.18]*	Sesquiterpene
$\alpha$ -Copaene	4.23	4.41	Sesquiterpene
$\alpha$ -Isocomene	0.08	0.90*	Sesquiterpene
$\beta$ -Bourbonene	0.03	0.01	Sesquiterpene
Benzyl 2-methylbutyrate?	0.09	0.05	Phenolic ester
$\beta$ -Cubebene	0.13	0.15	Sesquiterpene
$\beta$ -Elemene	1.07*	3.60*	Sesquiterpene
Benzyl isovalerate	[1.07]*	0.02	Phenolic ester
$\alpha$ -Gurjunene	0.86	[0.90]*	Sesquiterpene
Unknown	0.02		Sesquiterpene
$\beta$ -Ylangene	2.57*	0.09	Sesquiterpene
$\beta$ -Caryophyllene	[2.57]*	[3.60]*	Sesquiterpene
$\gamma$ -Maaliene	0.03	[3.60]*	Sesquiterpene
$\beta$ -Copaene	0.24	0.25*	Sesquiterpene
$\beta$ -Gurjunene	[0.24]	0.05	Sesquiterpene
$\alpha$ -Maaliene	0.06	0.16*	Sesquiterpene
Aromadendrene	1.49*	1.46	Sesquiterpene
$\alpha$ -Guaiene	[1.49]*	[3.60]*	Sesquiterpene
<i>trans</i> - $\alpha$ -Bergamotene	[1.49]*	[0.25]*	Sesquiterpene
Selina-5,11-diene	0.05	0.06	Sesquiterpene
6,9-Guaiadiene	0.10	[0.16]*	Sesquiterpene
<i>trans</i> -Muuro-la-3,5-diene	6.46	[6.63]*	Sesquiterpene
$\alpha$ -Humulene	0.26	0.35*	Sesquiterpene
allo-Aromadendrene	0.59	0.65	Sesquiterpene
4,5-diepi-Aristolochene	0.04	0.03	Sesquiterpene
Unknown	0.05	[0.35]*	Sesquiterpene
Selina-4,11-diene	0.08	0.08	Sesquiterpene
<i>trans</i> -Cadina-1(6),4-diene	4.12	2.90	Sesquiterpene
$\gamma$ -Muuro-lene	[4.12]	0.99*	Sesquiterpene
Germacrene D	0.38*	0.18	Sesquiterpene
$\alpha$ -Amorphene	[0.38]*	[0.99]*	Sesquiterpene
$\beta$ -Selinene	3.73	3.87	Sesquiterpene
allo-Aromadendr-9-ene	0.19	0.18	Sesquiterpene
<i>trans</i> -Muuro-la-4(15),5-diene	1.30	1.30	Sesquiterpene
$\alpha$ -Selinene	4.50*	3.71	Sesquiterpene
Viridiflorene	[4.50]*	0.59	Sesquiterpene
Bicyclogermacrene	[4.50]*	0.31	Sesquiterpene
epi-Cubebol	0.19	0.19	Sesquiterpenic alcohol
$\alpha$ -Muuro-lene	0.65	[0.69]*	Sesquiterpene
$\delta$ -Amorphene	0.13	0.11	Sesquiterpene
Unknown	1.81*	0.17*	Sesquiterpene
$\gamma$ -Cadinene	[1.81]*	0.69	Sesquiterpene
(3E,6E)- $\alpha$ -Farnesene	[1.81]*	1.08	Sesquiterpene
$\delta$ -Cadinene	15.58*	1.85	Sesquiterpene

7-epi- $\alpha$ -Selinene	[15.58]*	4.12	Sesquiterpene
<i>trans</i> -Calamenene	[15.58]*	10.68	Sesquiterpene
<i>trans</i> -Cadina-1,4-diene	4.58	[4.79]*	Sesquiterpene
$\alpha$ -Cadinene	0.12	[0.17]*	Sesquiterpene
Unknown	0.30	0.31	Sesquiterpene
$\alpha$ -Calacorene	0.41	0.56*	Sesquiterpene
Flavesone	4.99		Norsesquiterpenic ketone
Isocaryophyllene epoxide B	0.07	[0.56]*	Sesquiterpenic ether
Unknown	0.07	0.08	Oxygenated sesquiterpene
Palustrol	0.18	0.18	Sesquiterpenic alcohol
$\beta$ -Calacorene	0.10*	0.08	Sesquiterpene
( <i>E</i> )-Nerolidol	[0.10]*	[27.46]*	Sesquiterpenic alcohol
Spathulenol	0.56	[27.46]	Sesquiterpenic alcohol
Caryophyllene oxide	0.41	0.40	Sesquiterpenic ether
Globulol	0.32*	[27.46]	Sesquiterpenic alcohol
Unknown	[0.32]*		Terpenic ketone
Gleenol	0.21	27.46	Sesquiterpenic alcohol
Viridiflorol	0.11	[27.46]	Sesquiterpenic alcohol
Cubeban-11-ol	0.09	[27.46]*	Sesquiterpenic alcohol
Ledol	0.11	0.28*	Sesquiterpenic alcohol
Eudesm-5-en-11-ol	0.30	[27.46]	Sesquiterpenic alcohol
Humulene epoxide II	0.06	[0.28]*	Sesquiterpenic ether
Unknown	0.18	[27.46]	Oxygenated sesquiterpene
Unknown	0.05	[27.46]	Oxygenated sesquiterpene
Unknown	0.07	[27.46]	Oxygenated sesquiterpene
Isoleptospermone	4.95	[27.46]*	Sesquiterpenic ketone
Leptospermone	16.58*	[27.46]	Sesquiterpenic ketone
$\gamma$ -Eudesmol	[16.58]*	[27.46]*	Sesquiterpenic alcohol
Caryophylladienol II	[16.58]*	0.07	Sesquiterpenic alcohol
Cubenol	0.25	[27.46]*	Sesquiterpenic alcohol
$\tau$ -Cadinol	1.26*	[27.46]*	Sesquiterpenic alcohol
$\tau$ -Muurolol	[1.26]*	[27.46]	Sesquiterpenic alcohol
$\alpha$ -Muurolol	0.14	[27.46]	Sesquiterpenic alcohol
$\alpha$ -Cadinol	0.17	0.13	Sesquiterpenic alcohol
Selin-11-en-4 $\alpha$ -ol	0.53*	0.32	Sesquiterpenic alcohol
<i>cis</i> -Calamenen-10-ol	[0.53]*	0.30*	Sesquiterpenic alcohol
<i>trans</i> -Calamenen-10-ol	0.05	0.25*	Sesquiterpenic alcohol
Unknown	0.04		Oxygenated sesquiterpene
Unknown	0.11	[0.30]*	Oxygenated sesquiterpene
Cadalene	0.20	0.26	Sesquiterpene
Unknown	0.41*	0.08	Unknown
Unknown	[0.41]*	0.21	Oxygenated sesquiterpene
<i>trans</i> -14-nor-Cadina-5-en-4-one	0.21		Norsesquiterpenic ketone
(2 <i>E</i> ,6 <i>E</i> )-Farnesol	0.07	[0.25]*	Sesquiterpenic alcohol
14-Hydroxy- <i>trans</i> -calamenene	0.06		Sesquiterpenic alcohol
Grandiflorone	0.97		Terpenophenolic
<b>Total identified</b>	<b>96.52%</b>	<b>93.11%</b>	

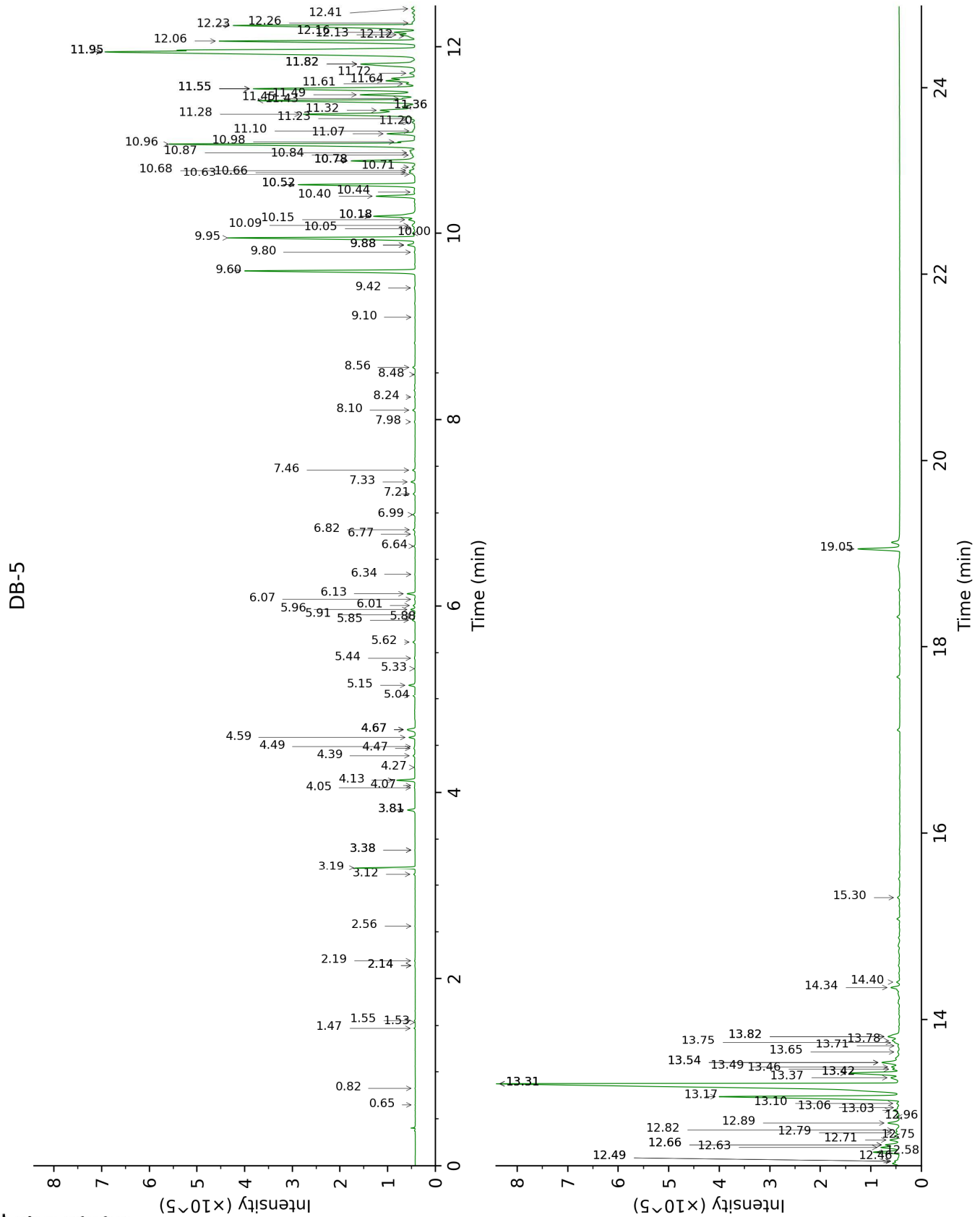
\*: Two or more compounds are coeluting on this column

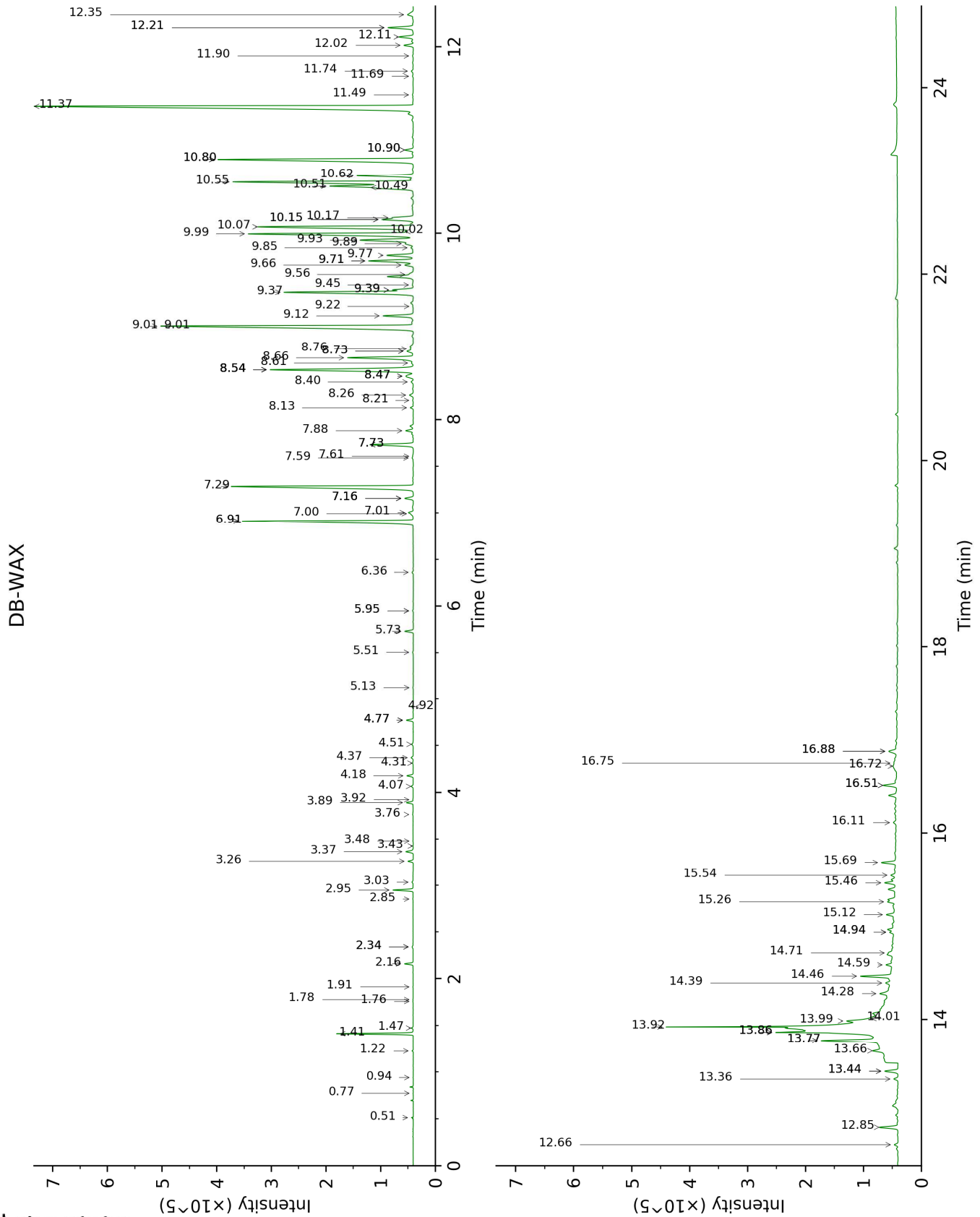
[xx]: Duplicate percentage due to coelutions, not taken account in the identified total

tr: The compound has been detected below 0.005% of total signal.

Note: no correction factor was applied

This page was intentionally left blank. The following pages present the complete data of the analysis.







FULL ANALYSIS DATA

Identification	Column DB-5			Column DB-WAX		
	R.T	R.I	%	R.T	R.I	%
Isovaleral	0.65	640	tr	0.77	888	tr
2-Ethylfuran	0.82	692	tr	0.94	924	tr
2,4-Dimethyl-3-pentanone	1.47	788	0.01	1.22	965	0.01
Hexanal	1.53	797	tr	1.91	1044	tr
Octane	1.55	799	0.01	0.51	791	0.01
(2E)-Hexenal	2.14*	850	0.01	3.48	1177	tr
Ethylbenzene	2.14*	850	[0.01]	2.34*	1084	0.02
(3Z)-Hexenol	2.19	854	0.01	5.95*	1354	0.01
Styrene	2.56	884	0.01	3.92	1212	tr
α-Thujene	3.12	924	0.02	1.47	1002	0.03
α-Pinene	3.19	929	0.96	1.41	993	0.98
Camphene	3.38*	942	0.01	1.78	1031	tr
α-Fenchene	3.38*	942	[0.01]	1.76	1029	tr
Sabinene	3.81*	970	0.14	2.34*	1084	[0.02]
β-Pinene	3.81*	970	[0.14]	2.16	1067	0.13
6-Methyl-5-hepten-2-one	4.05	986	0.01	5.13	1305	0.01
2-Pentylfuran	4.07	987	tr	3.76	1200	0.01
Myrcene	4.13	991	0.31	2.95	1135	0.31
α-Phellandrene	4.27	1000	tr	2.85	1127	tr
(3Z)-Hexenyl acetate	4.39	1008	0.03	4.92	1288	0.03
α-Terpinene	4.47	1013	0.02	3.03	1141	0.02
Hexyl acetate	4.49	1014	0.01	4.31	1241	0.02
para-Cymene	4.59	1020	0.11	4.18	1231	0.11
Limonene	4.67*	1026	0.21	3.26	1160	0.09
1,8-Cineole	4.67*	1026	[0.21]	3.37	1168	0.15
β-Phellandrene	4.67*	1026	[0.21]	3.43	1172	tr
(E)-β-Ocimene	5.04	1048	0.03	4.06	1222	0.03
γ-Terpinene	5.15	1056	0.12	3.89	1209	0.11
Unknown [m/z 79, 93 (60), 43 (40), 94 (35), 137 (33), 77 (26), 91 (20), 152 (18)]	5.33	1067	0.01	4.77*	1277	0.12
Octanol	5.44	1074	0.02	8.21	1523	0.01
Terpinolene	5.62	1085	0.04	4.37	1246	0.04
Linalool	5.85	1100	0.05	8.13	1516	0.05
2-Methylbutyl 2-methylbutyrate	5.88	1101	0.02	4.52	1257	0.04
Nonanal	5.91	1103	0.01	5.95*	1354	[0.01]
Isoamyl isovalerate	5.96	1107	0.08	4.77*	1277	[0.12]
Amyl isovalerate	6.01	1110	0.04	4.77*	1277	[0.12]
3-Methyl-3-butenyl 2-methylbutyrate	6.07	1114	0.01	5.51	1322	0.02
3-Methyl-3-butenyl isovalerate	6.13	1118	0.15	5.73	1338	0.15
trans-Pinocarveol	6.34	1131	0.01	9.22	1602	0.01
Prenyl isovalerate	6.64	1151	0.02	6.36	1384	0.03

Dimethyloctanedione isomer	6.77	1159	0.02	6.91*	1425	3.91
2,7-Dimethyl-3,5-octanedione	6.82	1162	0.05	7.00	1431	0.04
Terpinen-4-ol	6.98	1173	0.05	8.61	1554	0.04
α-Terpineol	7.21	1188	0.05	9.85	1653	0.05
2-Methylbutyl tiglate	7.34	1196	0.09	7.01	1432	0.09
3-Methyl-3-butenyl tiglate	7.46	1204	0.05			
Benzylacetone	7.98	1239	0.02	11.49	1791	0.02
Prenyl tiglate	8.10	1248	0.05			
Geraniol	8.24	1258	0.02	11.69	1808	0.02
Geranial	8.48	1274	0.01	10.15*	1678	0.69
Undec-(5Z)-en-2-one	8.56	1279	0.05	9.01*	1585	6.63
Benzyl isobutyrate	9.10	1313	0.01	10.80*	1732	4.79
Bicycloelemene	9.42	1336	0.03	7.16*	1443	0.18
α-Cubebene	9.60	1348	3.80	6.91*	1425	[3.91]
Longicyclene	9.80	1363	0.02	7.16*	1443	[0.18]
Modhephene	9.88*	1368	0.19	7.59	1475	0.03
α-Ylangene	9.88*	1368	[0.19]	7.16*	1443	[0.18]
α-Copaene	9.95	1374	4.23	7.29	1453	4.41
α-Isocomene	10.00	1377	0.08	7.73*	1486	0.90
β-Bourbonene	10.05	1380	0.03	7.61	1477	0.01
Benzyl 2-methylbutyrate?	10.08	1383	0.09	11.74	1813	0.05
β-Cubebene	10.15	1387	0.13	7.88	1497	0.15
β-Elemene	10.18*	1390	1.07	8.54*	1548	3.60
Benzyl isovalerate	10.18*	1390	[1.07]	11.90	1828	0.02
α-Gurjunene	10.40	1405	0.86	7.73*	1486	[0.90]
Unknown [m/z 119, 107 (86), 105 (85), 93 (78), 189 (66), 81 (65), 121 (64)... 204 (23)]	10.44	1408	0.02			
β-Ylangene	10.52*	1414	2.57	8.26	1527	0.09
β-Caryophyllene	10.52*	1414	[2.57]	8.54*	1548	[3.60]
γ-Maaliene	10.63	1423	0.03	8.54*	1548	[3.60]
β-Copaene	10.66†	1425	0.24	8.47*	1543	0.25
β-Gurjunene	10.68†	1426	[0.24]	8.40	1538	0.05
α-Maaliene	10.72	1429	0.06	8.73*	1564	0.16
Aromadendrene	10.78*	1434	1.49	8.66	1558	1.46
α-Guaiene	10.78*	1434	[1.49]	8.54*	1548	[3.60]
trans-α-Bergamotene	10.78*	1434	[1.49]	8.47*	1543	[0.25]
Selina-5,11-diene	10.84	1439	0.05	8.76	1566	0.06
6,9-Guaiadiene	10.87	1441	0.10	8.73*	1564	[0.16]
trans-Muurola-3,5-diene	10.96	1448	6.46	9.01*	1585	[6.63]
α-Humulene	10.98	1449	0.26	9.40*	1616	0.35
allo-Aromadendrene	11.07	1456	0.59	9.12	1594	0.65
4,5-diepi-Aristolochene	11.10	1458	0.04	9.45	1620	0.03
Unknown [m/z 161, 91 (97), 105 (76), 119	11.20	1465	0.05	9.40*	1616	[0.35]

(61), 41 (55)... 204 (44)]						
Selina-4,11-diene	11.24	1468	0.08	9.56	1630	0.08
<i>trans</i> -Cadina-1(6),4-diene	11.28†	1471	4.12	9.37	1614	2.90
γ-Muurolene	11.32†	1474	[4.12]	9.71*	1642	0.99
Germacrene D	11.36*	1477	0.38	9.89	1657	0.18
α-Amorphene	11.36*	1477	[0.38]	9.71*	1642	[0.99]
β-Selinene	11.43	1482	3.73	10.00	1665	3.87
allo-Aromadendr-9-ene	11.45	1484	0.19	9.66	1638	0.18
<i>trans</i> -Muurola-4(15),5-diene	11.49	1487	1.30	9.93	1660	1.30
α-Selinene	11.55*	1492	4.50	10.07	1671	3.71
Viridiflorene	11.55*	1492	[4.50]	9.76	1646	0.59
Bicyclogermacrene	11.55*	1492	[4.50]	10.17	1679	0.31
epi-Cubebol	11.61	1496	0.19	12.02	1838	0.19
α-Muurolene	11.64	1498	0.65	10.15*	1678	[0.69]
δ-Amorphene	11.72	1504	0.13	10.02	1667	0.11
Unknown [m/z 159, 145 (91), 131 (67), 105 (46), 202 (43)]	11.82*	1512	1.81	10.90*	1741	0.17
γ-Cadinene	11.82*	1512	[1.81]	10.49	1706	0.69
(3E,6E)-α-Farnesene	11.82*	1512	[1.81]	10.62	1717	1.08
δ-Cadinene	11.95*†	1522	15.58	10.51	1707	1.85
7-epi-α-Selinene	11.95*†	1522	[15.58]	10.55	1711	4.12
<i>trans</i> -Calamenene	11.95*†	1522	[15.58]	11.37	1781	10.68
<i>trans</i> -Cadina-1,4-diene	12.06	1531	4.58	10.80*	1732	[4.79]
α-Cadinene	12.12	1536	0.12	10.90*	1741	[0.17]
Unknown [m/z 157, 143 (86), 200 (43), 142 (36), 141 (28), 128 (25)]	12.13	1537	0.30	12.11	1846	0.31
α-Calacorene	12.16	1539	0.41	12.21*	1855	0.56
Flavesone	12.23	1544	4.99			
Isocaryophyllene epoxide B	12.26	1546	0.07	12.21*	1855	[0.56]
Unknown [m/z 161, 109 (98), 82 (93), 43 (72), 105 (68), 93 (59), 69 (56), 119 (55)... 222 (7)]	12.41	1559	0.07	13.36	1960	0.08
Palustrol	12.46	1563	0.18	12.35	1867	0.18
β-Calacorene	12.49*	1565	0.10	12.66	1895	0.08
(E)-Nerolidol	12.49*	1565	[0.10]	13.86*†	2007	[27.46]
Spathulenol	12.58	1572	0.56	14.46†	2065	[27.46]
Caryophyllene oxide	12.63	1576	0.41	12.85	1912	0.40
Globulol	12.66*	1578	0.32	13.99†	2019	[27.46]
Unknown [m/z 161, 159 (64), 43 (58), 182 (53), 41 (48), 105	12.66*	1578	[0.32]			

(40)... 252 (25)						
Gleenol	12.71	1582	0.21	13.66†	1988	27.46
Viridiflorol	12.75	1586	0.11	14.01†	2021	[27.46]
Cubeban-11-ol	12.79	1589	0.09	13.77*†	1998	[27.46]
Ledol	12.82	1591	0.11	13.44*	1968	0.28
Eudesm-5-en-11-ol	12.89	1597	0.30	14.39†	2058	[27.46]
Humulene epoxide II	12.96	1602	0.06	13.44*	1968	[0.28]
Unknown [m/z 43, 81 (97), 135 (71), 95 (62), 204 (61), 71 (59), 207 (56)... 222 (3)]	13.03	1607	0.18	14.59†	2077	[27.46]
Unknown [m/z 179, 161 (66), 119 (44), 95 (38), 105 (35)... 204 (24), 222 (1)]	13.06	1610	0.05	14.71†	2089	[27.46]
Unknown [m/z 151, 41 (15), 81 (13), 111 (13), 91 (13)...]	13.10	1614	0.07	14.28†	2047	[27.46]
Isoleptospermone	13.17	1620	4.95	13.86*†	2007	[27.46]
Leptospermone	13.31*	1631	16.58	13.92†	2013	[27.46]
γ-Eudesmol	13.31*	1631	[16.58]	14.94*†	2111	[27.46]
Caryophylladienol II	13.31*	1631	[16.58]	16.11	2231	0.07
Cubenol	13.37	1636	0.25	13.77*†	1998	[27.46]
τ-Cadinol	13.42*	1640	1.26	14.94*†	2111	[27.46]
τ-Muurolol	13.42*	1640	[1.26]	15.12†	2130	[27.46]
α-Muurolol	13.46	1644	0.14	15.26†	2144	[27.46]
α-Cadinol	13.49	1646	0.17	15.54	2172	0.13
Selin-11-en-4α-ol	13.54*	1650	0.53	15.69	2186	0.32
cis-Calamenen-10-ol	13.54*	1650	[0.53]	16.51*	2272	0.30
trans-Calamenen-10-ol	13.65	1659	0.05	16.88*	2310	0.25
Unknown [m/z 159, 177 (59), 135 (57), 91 (47), 105 (47)... 220? (25)]	13.71	1664	0.04			
Unknown [m/z 159, 118 (33), 91 (30), 131 (30)... 220? (4)]	13.75	1667	0.11	16.51*	2272	[0.30]
Cadalene	13.78	1670	0.20	15.46	2164	0.26
Unknown [m/z 175, 91 (94), 105 (51), 218 (33), 104 (17), 176 (12)...]	13.82*	1673	0.41	16.75	2297	0.08
Unknown [m/z 107, 91 (95), 93 (87), 79 (86), 105 (78), 41 (76), 95 (72)... 220 (18)]	13.82*	1673	[0.41]	16.72	2294	0.21
trans-14-nor-Cadina-5-en-4-one	14.34	1717	0.21			
(2E,6E)-Farnesol	14.40	1722	0.07	16.88*	2310	[0.25]
14-Hydroxy-trans-calamenene	15.30	1801	0.06			

Grandiflorone	19.05	2160	0.97	
<b>Total identified</b>		<b>96.52%</b>		<b>93.11%</b>
<b>Total reported</b>		<b>97.42%</b>		<b>95.26%</b>

\*: Two or more compounds are coeluting on this column

[xx]: Duplicate percentage due to coelutions, not taken account in the identified total

†: Peaks apexes were resolved, but peaks overlapped and were summed for analysis

tr: The compound has been detected below 0.005% of total signal.

Note: no correction factor was applied

R.T.: Retention time (minutes)

R.I.: Retention index