



PLANT THERAPY
100% PURE ESSENTIAL OILS

GC/MS BATCH NUMBER: J20103

ESSENTIAL OIL: JUNIPER BERRY
BOTANICAL NAME: JUNIPERUS COMMUNIS
ORIGIN: HUNGARY

KEY CONSTITUENTS PRESENT IN THIS BATCH OF JUNIPER BERRY OIL	%
α -PINENE	40.6
MYRCENE	10.6
SABINENE	8.8
β -PINENE	8.2
β -CARYOPHYLLENE	3.5
LIMONENE	3.4
TERPINEN-4-OL	3.0
p-CYMENE	2.8
α -HUMULENE	2.8
GERMACRENE D + γ -MUUROLENE	2.7
γ -TERPINENE	2.7

Comments from Robert Tisserand: Excellent fruity-resinous odor profile. All eleven key ISO constituents are within range.

Date : May 5, 2017

SAMPLE IDENTIFICATION

Internal code : 17D28-PTH1-1-DM

Customer identification : Juniper Berry - Hungary - J2010371R

Type : Essential oil

Source : *Juniperus communis*

Customer : Plant Therapy

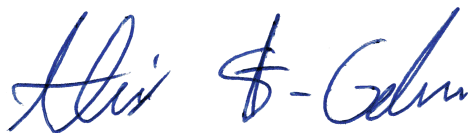
ANALYSIS

Method : PC-PA-001-15E06, "Analysis of the composition of a liquid essential oil by GC-FID" (in French).

Analyst : Benoit Roger Ph. D.

Analysis date : 2017-05-01

Checked and approved by :



Alexis St-Gelais, M. Sc., chimiste 2013-174

Note: This report may not be published, including online, without the written consent from Laboratoire PhytoChemia.

This report is digitally signed, it is only considered valid if the digital signature is intact.

IDENTIFIED COMPOUNDS

Identification	Column: BP5			Column: WAX			Molecular Class
	R.T.	R.I.	%	%	R.I.	R.T.	
Tricyclene	3.23*	917	0.06	0.07	924	1.02*	Monoterpene
α -Thujene	3.31*	923	0.92	1.35	964	1.19*	Monoterpene
α -Pinene	3.48*	932	40.61	40.45	960	1.17*	Monoterpene
Camphene	3.70*	946	0.27	0.24	1002	1.40*	Monoterpene
α -Fenchene	3.70*	946	[0.27]	0.03	995	1.34*	Monoterpene
Thuja-2,4(10)-diene	3.79*	951	0.02	8.76	1059	1.94*	Monoterpene
Verbenene	3.88*	956	0.01	[40.45]	960	1.17*	Monoterpene
Sabinene	4.15*	973	8.77	[8.76]	1059	1.94*	Monoterpene
β -Pinene	4.22*	977	8.16	8.20	1044	1.77*	Monoterpene
Camphene analog II	4.32*	982	0.09				Monoterpene
Myrcene	4.50*	993	10.66	10.55	1121	2.51*	Monoterpene
2-Carene	4.50*	993	[10.66]	0.08	1082	2.20*	Monoterpene
Pseudolimonene	4.69*	1004	0.16	0.16	1114	2.41*	Monoterpene
α -Phellandrene	4.74*	1007	0.20	0.10	1112	2.39*	Monoterpene
α -Terpinene	4.93*	1017	0.76	0.79	1126	2.57*	Monoterpene
meta-Cymene	5.02*	1022	0.04	[0.79]	1126	2.57*	Monoterpene
para-Cymene	5.12*	1028	2.83	2.87	1210	3.68*	Monoterpene
Limonene	5.17*	1030	3.48	3.41	1144	2.80*	Monoterpene
β -Phellandrene	5.17*	1030	[3.48]	0.36	1148	2.86*	Monoterpene
1,8-Cineole	5.19*	1032	0.29	[0.36]	1148	2.86*	Monoterp. ether
cis- β -Ocimene	5.34*	1039	tr	2.67	1191	3.41*	Monoterpene
trans- β -Ocimene	5.51*	1049	0.03	0.02	1203	3.58*	Monoterpene
γ -Terpinene	5.71*	1060	2.67	[2.67]	1191	3.41*	Monoterpene
cis-Sabinene hydrate	6.00*	1076	0.02	0.19	1408	6.66*	Monoterp. alcohol
Terpinolene	6.18*	1085	0.73	0.71	1225	3.88*	Monoterpene
para-Cymenene	6.37*	1096	0.05	0.04	1368	6.04*	Monoterpene
α -Pinene oxide	6.50*	1102	0.01	0.01	1300	4.99*	Monoterp. ether
Linalool	6.70*	1109	0.01	0.05	1493	8.65*	Monoterp. alcohol
cis-para-Menth-2-en-1-ol	7.14*	1126	0.02	[0.05]	1493	8.65*	Monoterp. alcohol
trans-Pinocarveol	7.52*	1139	0.02	0.31	1568	11.05*	Monoterp. alcohol
Camphor	7.64*	1144	0.02	0.03	1425	7.01*	Monoterp. ketone
trans-Verbenol	7.72*	1147	0.01	0.04	1597	12.09*	Monoterp. alcohol
Borneol	8.50*	1175	0.03	2.42	1625	13.16*	Monoterp. alcohol
Terpinen-4-ol	8.72*	1183	2.97	3.02	1532	9.70*	Monoterp. alcohol
α -Terpineol	9.30*	1203	0.15	0.14	1628	13.32*	Monoterp. alcohol
Methyl citronellate	11.83*	1259	0.02	0.02	1507	8.95*	Monoterp. ester
Bornyl acetate	12.82*	1281	0.10	0.15	1505	8.90*	Monoterp. ester
2-Undecanone	13.72*	1301	0.02	0.04	1560	10.79*	Aliphatic ketone
δ -Elemene	15.23*	1323	0.03	0.03	1418	6.85*	Sesquiterpene
α -Cubebene	15.89*	1334	0.19	[0.19]	1408	6.66*	Sesquiterpene
α -Terpinyl acetate	16.50*	1343	0.04	0.24	1618	12.90*	Monoterp. ester

α -Ylangene	17.12*	1352	0.03	0.01	1421	6.90*	Sesquiterpene
α -Copaene	17.58*	1359	0.16	0.16	1431	7.17*	Sesquiterpene
β -Elemene	18.79*	1378	0.59	0.58	1526	9.50*	Sesquiterpene
Longifolene	19.41*	1387	0.05	0.06	1480	8.31*	Sesquiterpene
α -Gurjunene	19.55*	1389	0.05	0.04	1461	7.86*	Sesquiterpene
β -Caryophyllene	20.51*	1403	3.47	3.49	1523	9.41*	Sesquiterpene
Thujopsen	21.36*	1413	0.04	0.02	1538	9.95*	Sesquiterpene
γ -Elemene	21.72*	1417	0.21	[0.31]	1568	11.05*	Sesquiterpene
Aromadendrene	21.79*	1418	0.03	0.02	1536	9.87*	Sesquiterpene
<i>cis</i> - β -Farnesene	22.84*	1431	0.03	0.03	1587	11.75*	Sesquiterpene
<i>cis</i> -Muuro-la-3,5-diene	22.93*	1432	0.10	0.04	1552	10.48*	Sesquiterpene
α -Humulene	23.28*	1436	2.76	2.84	1582	11.59*	Sesquiterpene
<i>trans</i> - β -Farnesene	24.39*	1449	0.21	[0.24]	1618	12.90*	Sesquiterpene
<i>trans</i> -Cadina-1(6),4-diene	24.90*	1456	0.09	[2.84]	1582	11.59*	Sesquiterpene
Germacrene D	25.47*	1462	2.70	[2.42]	1625	13.16*	Sesquiterpene
γ -Muuro-lene	25.47*	1462	[2.70]	0.35	1611	12.63*	Sesquiterpene
β -Selinene	26.01*	1469	0.12	0.13	1627	13.30*	Sesquiterpene
Bicyclgermacrene	26.65*	1477	0.26	0.13	1642	14.09*	Sesquiterpene
α -Selinene	26.65*	1477	[0.26]	0.17	1634	13.67*	Sesquiterpene
α -Muuro-lene	27.42*	1486	0.22	0.23	1646	14.30*	Sesquiterpene
Valencene	27.55*	1488	0.17	0.12	1664	15.20*	Sesquiterpene
γ -Cadinene	28.44*	1498	0.29	0.33	1668	15.43*	Sesquiterpene
δ -Cadinene	29.13*	1508	0.94	0.97	1674	15.76*	Sesquiterpene
<i>trans</i> -Cadina-1,4-diene	30.01*	1520	0.10	0.06	1694	16.75*	Sesquiterpene
Selina-3,7(11)-diene	30.18*	1522	0.13	0.13	1681	16.11*	Sesquiterpene
α -Cadinene	30.45*	1526	0.09	0.05	1702	17.19*	Sesquiterpene
Guaia-3,9-diene?	30.54*	1527	0.06	0.06	1692	16.65*	Sesquiterpene
Germacrene B	31.82*	1545	0.91	0.90	1724	18.31*	Sesquiterpene
α -Elemol	32.22*	1551	0.02	0.02	1998	35.65*	Sesquiterp. alcohol
Spathulenol	33.59*	1570	0.09	0.04	2022	36.68*	Sesquiterp. alcohol
(<i>E</i>)-Nerolidol	33.59*	1570	[0.09]	0.02	1991	35.29*	Sesquiterp. alcohol
1,10-diepi-Cubenol	36.42*	1616	0.04	0.06	1957	33.79*	Sesquiterp. alcohol
τ -Cadinol	37.27*	1637	0.08	0.07	2073	38.43*	Sesquiterp. alcohol
τ -Muuro-lol	37.38*	1640	0.09	0.09	2089	38.93*	Sesquiterp. alcohol
α -Cadinol	37.82*	1650	0.18	0.27	2127	40.10*	Sesquiterp. alcohol
meta-Camphorene	46.83*	1943	0.06	0.08	2135	40.36*	Diterpene
para-Camphorene	47.56*	1972	0.05	0.09	2181	41.55*	Diterpene
Total identified			98.89%	99.21%			

*: Two or more compounds are coeluting on this column

[xx]: Duplicate percentage due to coelutions, not taken account in the identified total

Note: no correction factor was applied

OTHER DATA

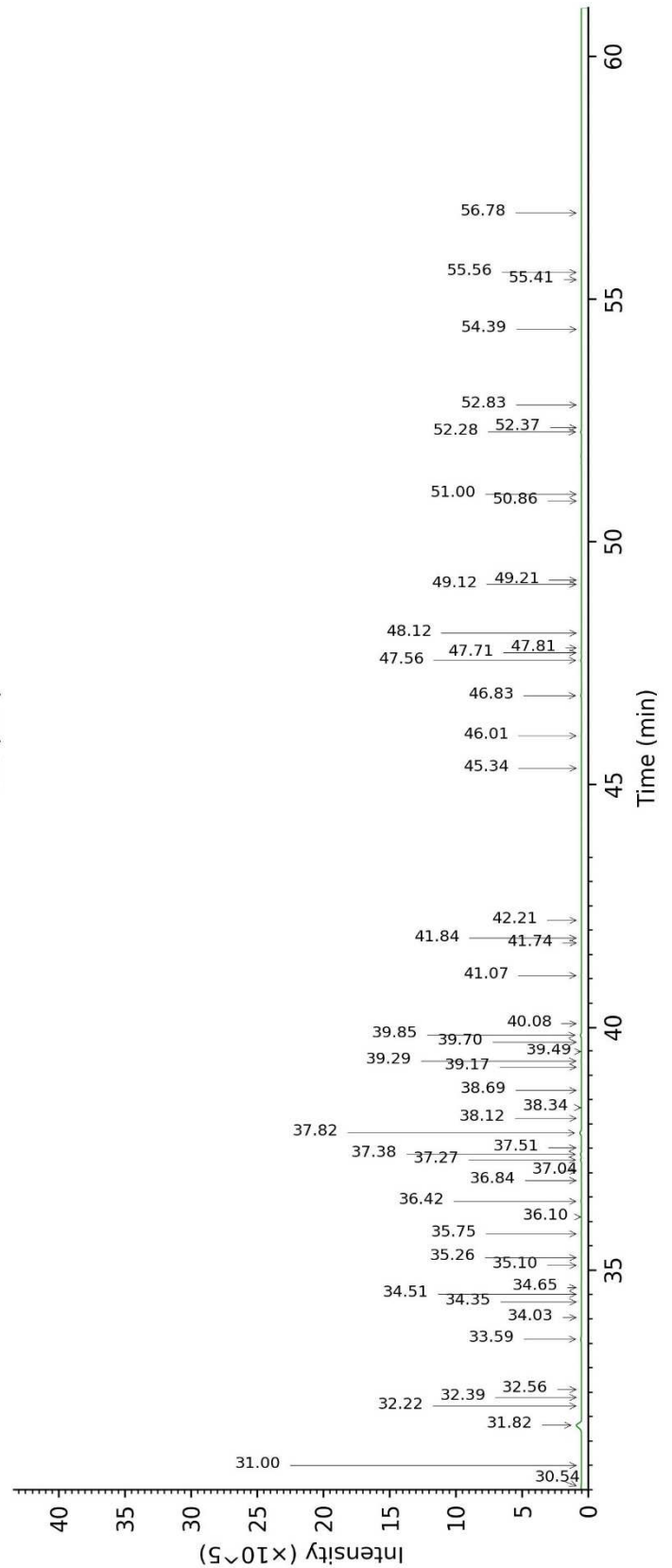
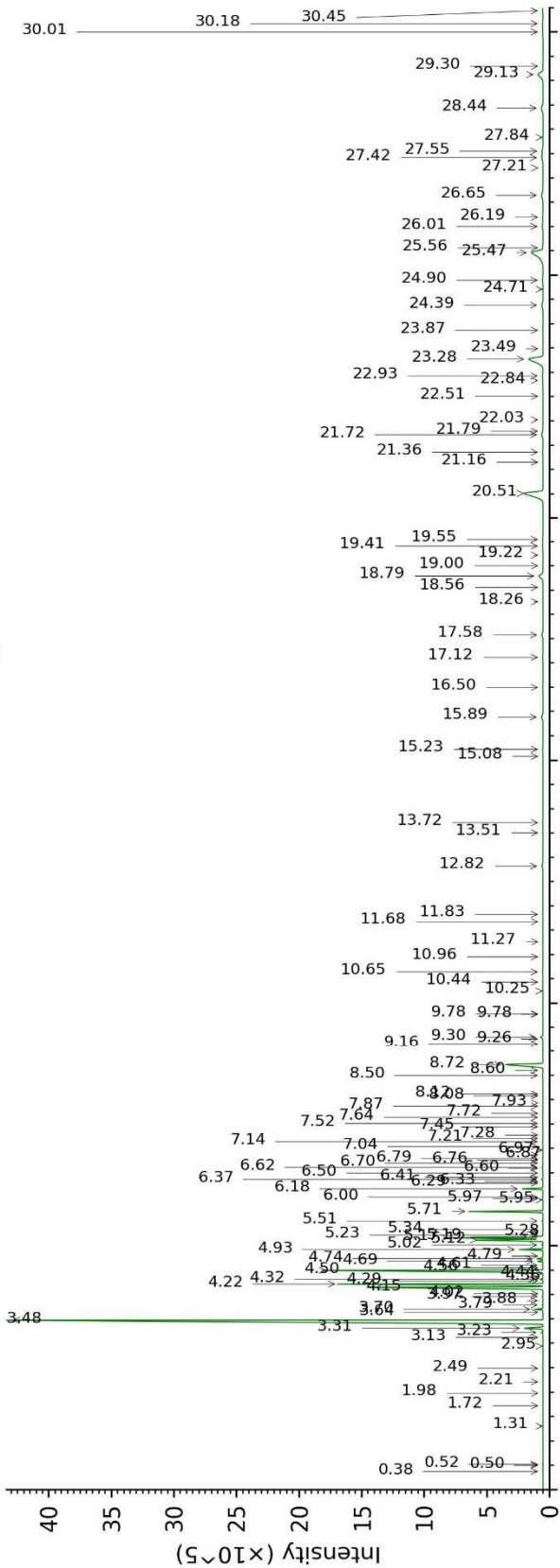
Physical aspect : Clear liquid

Refractive index : 1.4740 ± 0.0003 (20 °C)

CONCLUSION

No adulterant, contaminant or diluent were detected using this method.

17D28-PTH1-1-DM_BP5



17D28-PTH1-1-DM_WAX

