

Laboratory Test Report

SAMPLE NAME : Frankincense Carterii
CLIENT NAME : Plant Therapy
CLIENT LOT # : F30111R
APRC LOT# : OTC220927F

Column : ZB5 (60 m length × 0.25 mm inner diameter × 0.25 µm film thicknes)
Instrument : Shimadzu GCMS-QP2010 Ultra
Carrier gas : Helium 80 psi
Temperature ramp : 2 degrees Celsius per minute up to 260-degree Celsius
Split ratio : 30:1
Sample preparation : 5% w/v solution with Dichloromethane

Interpretation on this sample

The analysis of Frankincense sample meets the standard chemical profile of *Boswellia carterii* essential oil.

Analyzed by : Dr Prabodh Satyal
Reviewed by : Ambika Poudel

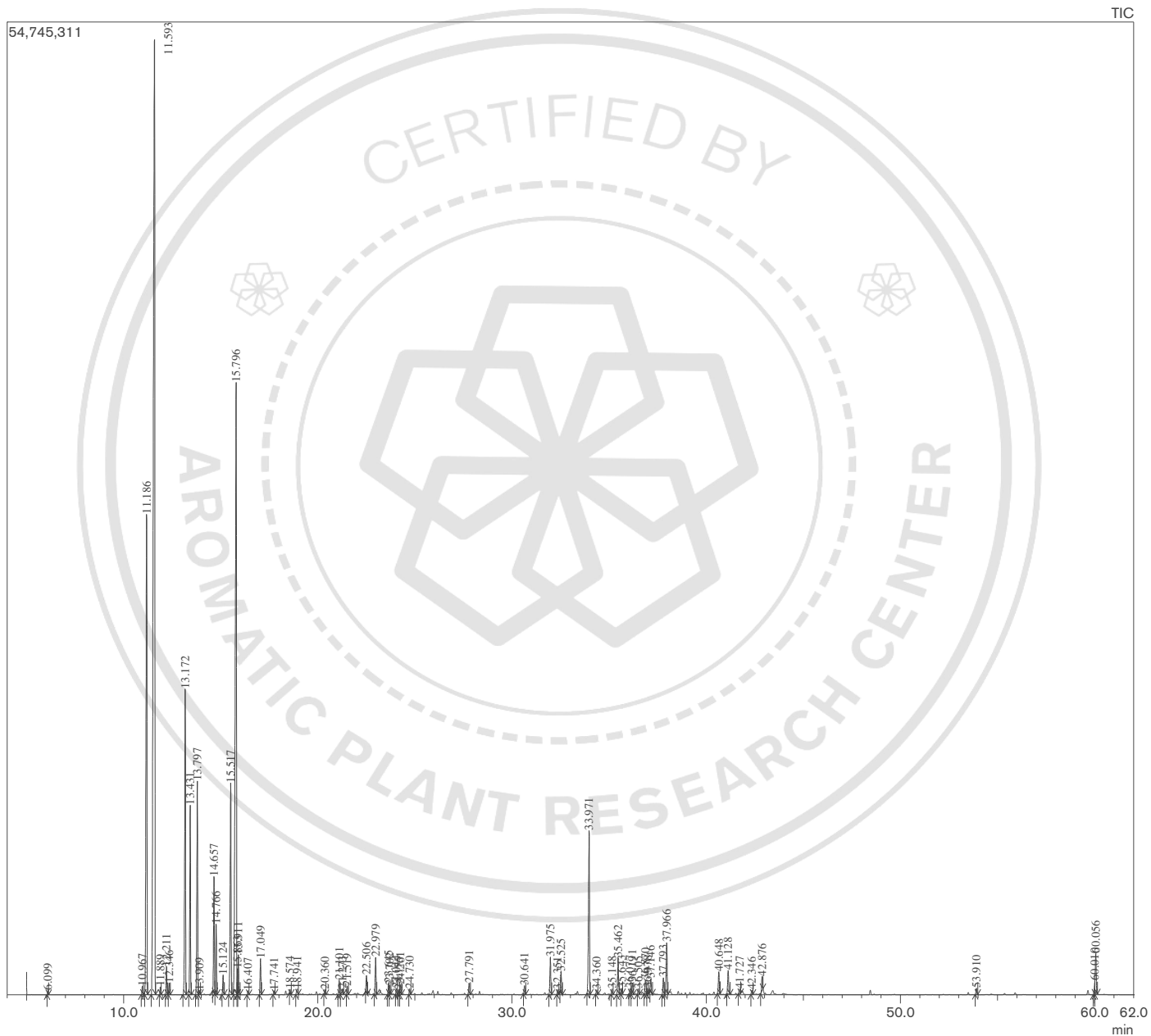
Issued Date : 9/28/2022

GCMS Analysis

Sample Information

Analyzed by : Dr. Prabodh Satyal
Analyzed : 9/28/2022 6:39:18 PM
Sample Type : Essential Oil
Sample Name : Frankincense Carterii
Client Name : Plant Therapy
Client Lot# : F30111R
APRC Lot# : OTC220927F
Injection Volume : 0.30

Chromatogram



Peak Report

Peak#	R.Time	Name	Area%
1	6.099	Toluene	0.05
2	10.967	Hashishene	0.15
3	11.186	alpha-Thujene	10.64
4	11.593	alpha-Pinene	32.99
5	11.889	Thujadiene	0.12
6	12.211	Camphene	0.45
7	12.346	Thuja-2,4(10)-diene	0.19
8	13.172	Sabinene	5.94
9	13.431	beta-Pinene	3.28
10	13.797	Myrcene	3.97
11	13.909	1,3,5-Trimethylenecycloheptane+Dehydro-1,8-Cineole	0.08
12	14.657	alpha-Phellandrene	2.08
13	14.766	delta-3-Carene	1.14
14	15.124	alpha-Terpinene	0.35
15	15.517	para-Cymene	4.67
16	15.796	Limonene	17.43
17	15.863	beta-Phellandrene	0.34
18	15.911	1,8-Cineole	0.65
19	16.407	trans-beta-Ocimene	0.07
20	17.049	gamma-Terpinene	0.65
21	17.741	Pinol	0.07
22	18.574	para-Cymenene	0.07
23	18.941	Linalool	0.15
24	20.360	alpha-Campholenal	0.08
25	21.101	trans-Pinocarveol	0.27
26	21.273	trans-Verbenol	0.10
27	21.519	alpha-Felandren-8-ol	0.15
28	22.506	para-Mentha-1,5-dien-8-ol	0.31
29	22.979	Terpinen-4-ol	0.71
30	23.645	alpha-Terpineol	0.22
31	23.702	Myrtenal	0.16
32	24.044	cis-Sabinol	0.11
33	24.175	Octyl acetate	0.08
34	24.261	Verbenone	0.18
35	24.730	trans-Carveol	0.10
36	27.791	Bornyl acetate	0.22
37	30.641	alpha-Cubebene	0.16
38	31.975	alpha-Copaene	0.77
39	32.351	alpha-Bourbonene	0.09
40	32.525	beta-Elemene	0.41
41	33.971	beta-Caryophyllene	3.76
42	34.360	trans-alpha-Bergamotene	0.09
43	35.148	trans-Muurola-3,5-diene	0.10
44	35.462	alpha-Humulene	0.77
45	35.643	allo-Aromadendrene	0.10
46	36.077	cis-Cadina-1(6),4-diene	0.12
47	36.191	trans-Cadina-1(6),4-diene	0.25
48	36.505	Germacrene D	0.11
49	36.870	beta-Selinene	0.36
50	36.978	trans-Muurola-4(14),5-diene	0.12
51	37.146	alpha-Murolene	0.27
52	37.793	gamma-Cadinene	0.35
53	37.966	delta-Cadinene	1.18
54	40.648	Caryophyllene oxide	0.49
55	41.128	Viridiflorol	0.53
56	41.727	Humulene epoxide II	0.12
57	42.346	1-epi-Cubenol	0.09
58	42.876	epi-alpha-Cadinol	0.29
59	53.910	3-cis-Cembrene A	0.13
60	60.010	Incensole	0.19
61	60.056	Serratol	0.90
			100.00