

Date : December 21, 2018

CERTIFICATE OF ANALYSIS – GC PROFILING

SAMPLE IDENTIFICATION

Internal code : 18L17-PTH10-1-CC

Customer identification : Frankincense Serrata - India - F4010784R

Type : Essential oil

Source : *Boswellia serrata*

Customer : Plant Therapy

ANALYSIS

Method: PC-PA-014-17J19 - Analysis of the composition of an essential oil, or other volatile liquid, by FAST GC-FID (in French); identifications validated by GC-MS.

Analyst : Sylvain Mercier, M. Sc., Chimiste

Analysis date : December 20, 2018

Checked and approved by :



Alexis St-Gelais, M. Sc., chimiste 2013-174

Note: This report may not be published, including online, without the written consent from Laboratoire PhytoChemia.

This report is digitally signed, it is only considered valid if the digital signature is intact.

PHYSICOCHEMICAL DATA

Physical aspect: Clear liquid

Refractive index: 1.4590 ± 0.0003 (20 °C)

CONCLUSION

No adulterant, contaminant or diluent has been detected using this method.

ANALYSIS SUMMARY

Identification	DB-5 (%)	DB-WAX (%)	Classe
Toluene	0.01	67.91*	Simple phenolic
Unknown	0.01	0.01	Monoterpene
Unknown	0.03		Unknown
Hashishene	0.13	5.45*	Monoterpene
Tricyclene	tr	0.01	Monoterpene
α -Thujene	67.99	[67.91]*	Monoterpene
α -Pinene	5.34	[5.45]*	Monoterpene
Unknown	0.64	0.64	Monoterpene
Camphene	0.07*	0.07	Monoterpene
α -Fenchene	[0.07]*	0.01	Monoterpene
Thuja-2,4(10)-diene	0.02	5.09*	Monoterpene
meta-Cymene	0.05	0.90*	Monoterpene
Sabinene	5.44*	[5.09]*	Monoterpene
β -Pinene	[5.44]*	0.38	Monoterpene
Dehydro-1,8-cineole	0.02	0.01	Monoterpenic ether
Myrcene	0.86	[0.90]*	Monoterpene
α -Phellandrene	2.09*	2.08	Monoterpene
Pseudolimonene	[2.09]*	tr	Monoterpene
Δ^3 -Carene	3.50	3.50	Monoterpene
α -Terpinene	0.53	0.53	Monoterpene
ortho-Cymene	0.11*	1.94*	Simple phenolic
Carvomenthene	[0.11]*	0.04	Aliphatic alcohol
para-Cymene	1.83	[1.94]*	Monoterpene
Unknown	2.71	0.17	Unknown
Limonene	[2.71]*	2.10	Monoterpene
β -Phellandrene	[2.71]*	0.47*	Monoterpene
1,8-Cineole	[2.71]*	[0.47]*	Monoterpenic ether
(Z)- β -Ocimene	0.42	0.42	Monoterpene
Unknown	0.06		Unknown
(E)- β -Ocimene	0.23	0.23	Monoterpene
Unknown	1.05*	0.01	Unknown
γ -Terpinene	[1.05]*	1.04	Monoterpene
cis-Sabinene hydrate	0.09	0.10*	Monoterpenic alcohol
Unknown	0.01	0.01	Oxygenated monoterpene
cis-Linalool oxide (fur.)	0.01	0.01	Monoterpenic alcohol
Isoterpinolene	0.01	0.01	Monoterpene
Terpinolene	0.35*	0.32	Monoterpene
para-Cymenene	[0.35]*	0.26*	Monoterpene
trans-Sabinene hydrate	0.08	0.07	Monoterpenic alcohol
Linalool	0.14*	0.11	Monoterpenic alcohol
α -Thujone	[0.14]*	0.04	Monoterpenic ketone
Unknown	0.27*	[0.26]*	Oxygenated monoterpene
β -Thujone	[0.27]*	[0.26]*	Monoterpenic ketone
cis-para-Menth-2-en-1-ol	0.07	0.06	Monoterpenic alcohol
α -Campholenal	0.01	0.01	Monoterpenic aldehyde
Unknown	0.01		Unknown
allo-Ocimene	0.03	0.02	Monoterpene
cis-para-Mentha-2,8-dien-1-ol	0.02*	0.03*	Monoterpenic alcohol

<i>trans</i> -Pinocarveol	[0.02]*	0.01	Monoterpenic alcohol
<i>trans</i> -Sabinol	0.07	0.25	Monoterpenic alcohol
<i>trans</i> -Verbenol	0.02*	[0.03]*	Monoterpenic alcohol
Epoxyterpinolene	[0.02]*	0.01	Monoterpenic ether
Unknown	0.01	[0.10]*	Unknown
Unknown	0.01		Oxygenated monoterpene
Unknown	0.03		Oxygenated monoterpene
Borneol	0.03	[0.25]*	Monoterpenic alcohol
α -Phellandren-8-ol	0.02	0.02*	Monoterpenic alcohol
<i>cis</i> -Sabinol	0.08	0.08	Monoterpenic alcohol
Umbellulone	0.02	0.02	Monoterpenic ketone
Terpinen-4-ol	0.78	0.82*	Monoterpenic alcohol
meta-Cymen-8-ol	0.02	0.02	Monoterpenic alcohol
α -Terpineol	0.05	[0.25]*	Monoterpenic alcohol
Methylchavicol	1.90	1.95*	Phenylpropanoid
α -Phellandrene epoxide	0.02	0.03	Monoterpenic ether
Verbenone	0.03	0.05	Monoterpenic ketone
<i>trans</i> -Piperitol	0.02	0.01	Monoterpenic alcohol
<i>trans</i> -Carveol	0.01	0.01	Monoterpenic alcohol
Piperitone	0.03	0.11*	Monoterpenic ketone
Linalyl acetate	0.03	0.05	Monoterpenic ester
Unknown	0.03		Oxygenated monoterpene
Bornyl acetate	0.02	0.02	Monoterpenic ester
Thymol	0.01	0.01	Monoterpenic alcohol
Carvacrol	0.01	0.02	Monoterpenic alcohol
α -Terpinyl acetate	0.04	0.03	Monoterpenic ester
α -Copaene	0.09	0.10	Sesquiterpene
β -Bourbonene	0.46	0.48	Sesquiterpene
1,5-diepi- β -Bourbonene	0.03	0.04	Sesquiterpene
β -Elemene	0.01	0.06*	Sesquiterpene
Sibirene	0.07	0.07	Sesquiterpene
Methyleugenol	0.09	0.09	Phenylpropanoid
β -Caryophyllene	0.07*	[0.06]*	Sesquiterpene
β -Ylangene	[0.07]*	0.01	Sesquiterpene
β -Copaene	0.06	0.06	Sesquiterpene
<i>trans</i> - α -Bergamotene	0.04	[0.82]*	Sesquiterpene
Isogermacrene D	0.04	0.04	Sesquiterpene
α -Humulene	0.01	[1.95]*	Sesquiterpene
<i>cis</i> -Muurolo-4(15),5-diene	0.01	0.02	Sesquiterpene
γ -Muurolole	0.03	0.03	Sesquiterpene
Germacrene D	0.13	[0.25]*	Sesquiterpene
Unknown	0.09	[0.11]*	Sesquiterpene
α -Muurolole	0.01	[0.02]*	Sesquiterpene
γ -Cadinene	0.02	0.11*	Sesquiterpene
Kessane	0.11*	tr	Sesquiterpenic ether
δ -Cadinene	[0.11]*	[0.11]*	Sesquiterpene
Elemicin	0.02	0.02	Phenylpropanoid
Unknown	0.01	0.01	Oxygenated sesquiterpene
Unknown	0.02	0.01	Unknown
α -Phellandrene dimer I	0.01		Diterpene
α -Phellandrene dimer II	0.03	0.03	Diterpene
α -Phellandrene dimer III	0.01	0.01	Diterpene

(3E)-Cembrene A	0.02	0.03	Diterpene
Verticilla-4(20),7,11-triene	0.02		Diterpene
Cembrenol	0.02		Diterpenic alcohol
Serratol	0.08	0.09	Diterpenic alcohol
Total identified	98.04%	98.03%	

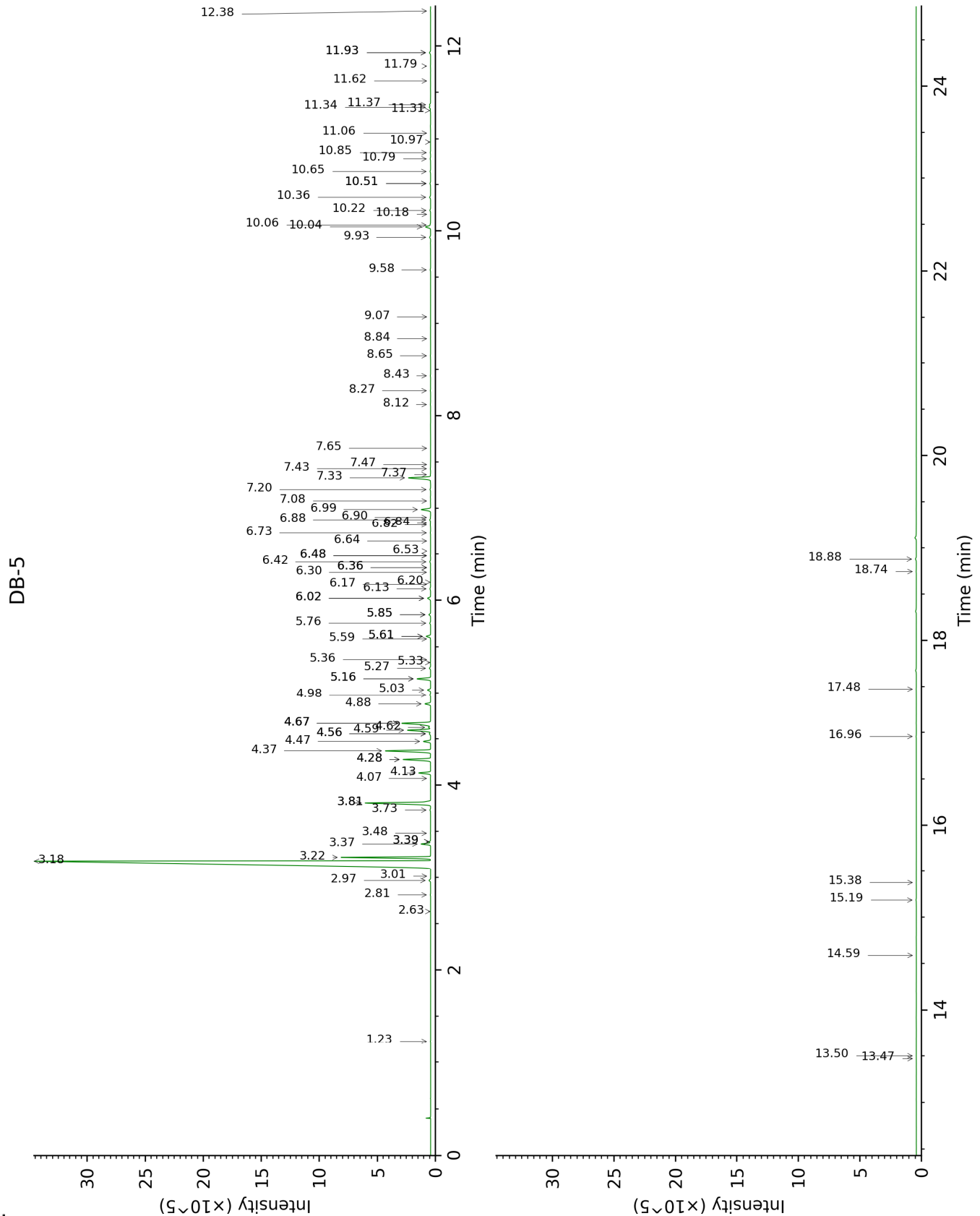
*: Two or more compounds are coeluting on this column

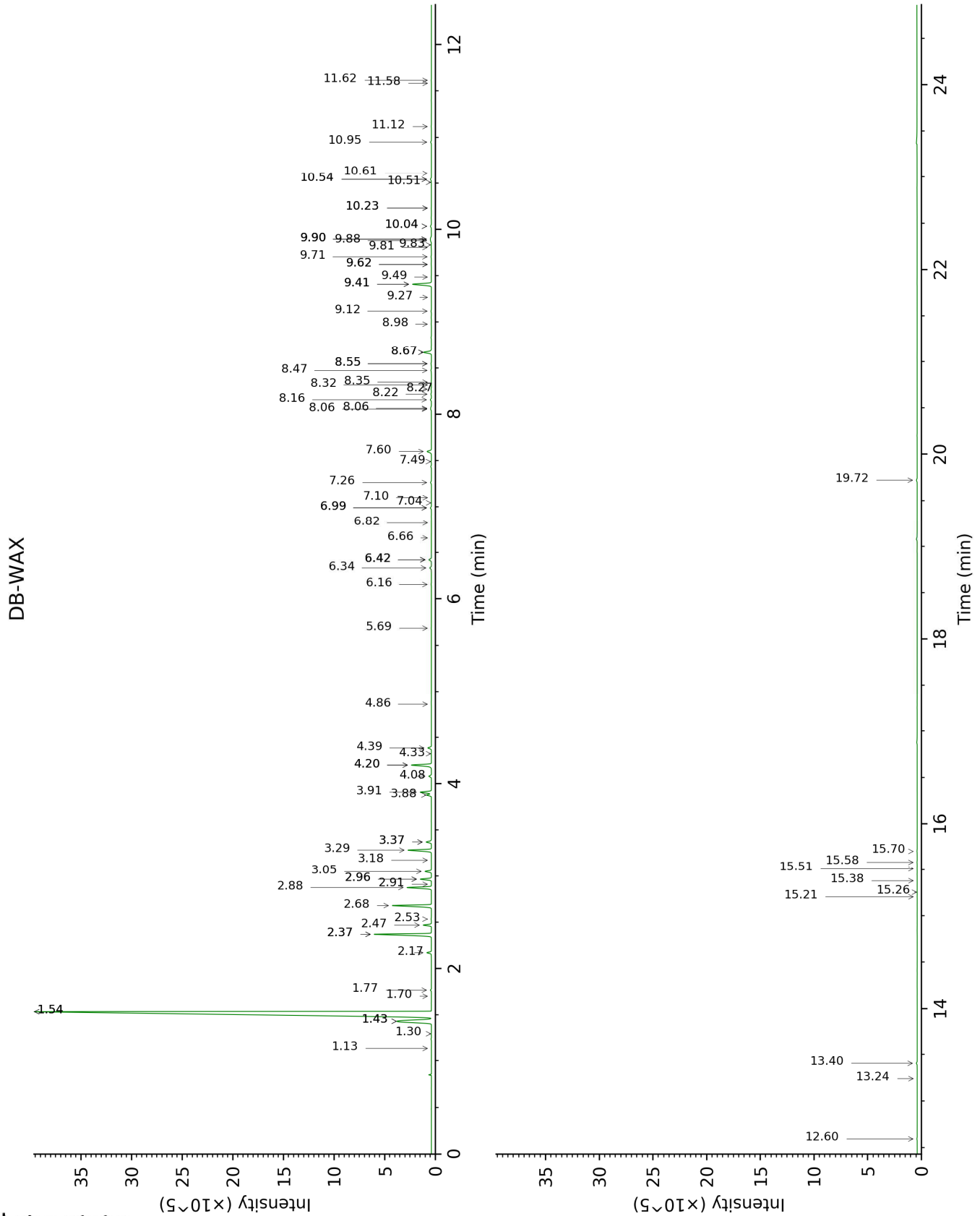
[xx]: Duplicate percentage due to coelutions, not taken account in the identified total

tr: The compound has been detected below 0.005% of total signal.

Note: no correction factor was applied

This page was intentionally left blank. The following pages present the complete data of the analysis.





FULL ANALYSIS DATA

Identification	Column DB-5			Column DB-WAX		
	R.T	R.I	%	R.T	R.I	%
Toluene	1.23	756	0.01	1.54*	1005	67.91
Unknown [m/z 93, 91 (75), 121 (61), 77 (58), 79 (38), 92 (26), 43 (24), 41 (23), 105 (22), 107 (19), 136 (16)]	2.63	890	0.01	1.13	949	0.01
Unknown [m/z 93, 91 (72), 121 (58), 77 (49), 79 (41), 43 (22), 105 (20), 107 (20), 41 (18), 136 (17), 92 (17)]	2.81	904	0.03			
Hashishene	2.97	914	0.13	1.43*	993	5.45
Tricyclene	3.01	917	tr	1.30	973	0.01
α -Thujene	3.18	928	67.99	1.54*	1005	[67.91]
α -Pinene	3.22	931	5.34	1.43*	993	[5.45]
Unknown [m/z 91, 92 (47), 65 (11)... 134 (1)]	3.37	941	0.64	2.47	1094	0.64
Camphene	3.39*	942	0.07	1.77	1027	0.07
α -Fenchene	3.39*	942	[0.07]	1.70	1021	0.01
Thuja-2,4(10)-diene	3.48	948	0.02	2.37*	1084	5.09
meta-Cymene	3.73	965	0.05	2.96*	1132	0.90
Sabinene	3.81*	970	5.44	2.37*	1084	[5.09]
β -Pinene	3.81*	970	[5.44]	2.17	1065	0.38
Dehydro-1,8-cineole	4.07	987	0.02	3.18	1149	0.01
Myrcene	4.13	991	0.86	2.96*	1132	[0.90]
α -Phellandrene	4.28*	1001	2.09	2.88	1126	2.08
Pseudolimonene	4.28*	1001	[2.09]	2.91	1128	tr
Δ 3-Carene	4.37	1007	3.50	2.68	1110	3.50
α -Terpinene	4.47	1013	0.53	3.05	1139	0.53
ortho-Cymene	4.56*	1018	0.11	4.20*	1228	1.94
Carvomenthene	4.56*	1018	[0.11]	2.53	1099	0.04
para-Cymene	4.59	1021	1.83	4.20*	1228	[1.94]
Unknown [m/z 109, 43 (58), 95 (26)... 137 (15)...]	4.62†	1022	2.71	6.34	1379	0.17
Limonene	4.67*†	1025	[2.71]	3.28	1158	2.10
β -Phellandrene	4.67*†	1025	[2.71]	3.37*	1164	0.47
1,8-Cineole	4.67*†	1025	[2.71]	3.37*	1164	[0.47]
(Z)- β -Ocimene	4.88	1038	0.42	3.88	1204	0.42
Unknown [m/z 109, 43 (57), 91	4.98	1045	0.06			

(28), 67 (25), 93 (24), 95 (22), 77 (21), 137 (21), 41 (17), 79 (14)...						
(E)-β-Ocimene	5.03	1048	0.23	4.08	1219	0.23
Unknown [m/z 109, 45 (67), 41 (40), 67 (39), 81 (33), 79 (27), 95 (24), 91 (23), 82 (21), 55 (21), 93 (20)...	5.16*	1056	1.05	7.04	1431	0.01
γ-Terpinene	5.16*	1056	[1.05]	3.91	1206	1.04
cis-Sabinene hydrate	5.27	1063	0.09	6.99*	1427	0.10
Unknown [m/z 79, 93 (60), 43 (40), 94 (35), 137 (33), 77 (26), 91 (20), 152 (18)]	5.33	1067	0.01	4.86	1278	0.01
cis-Linalool oxide (fur.)	5.36	1069	0.01	6.66	1403	0.01
Isoterpinolene	5.59	1083	0.01	4.32	1238	0.01
Terpinolene	5.61*	1085	0.35	4.39	1242	0.32
para-Cymenene	5.61*	1085	[0.35]	6.42*	1386	0.26
trans-Sabinene hydrate	5.76	1094	0.08	8.06	1506	0.07
Linalool	5.85*	1100	0.14	8.16	1514	0.11
α-Thujone	5.85*	1100	[0.14]	6.16	1366	0.04
Unknown [m/z 109, 81 (54), 91 (32), 79 (22)...	6.02*	1111	0.27	6.42*	1386	[0.26]
β-Thujone	6.02*	1111	[0.27]	6.42*	1386	[0.26]
cis-para-Menth-2- en-1-ol	6.13	1118	0.07	8.22	1519	0.06
α-Campholenal	6.18	1121	0.01	7.10	1435	0.01
Unknown [m/z 111, 43 (22), 55 (14), 41 (12), 110 (11)...	6.20	1122	0.01			
allo-Ocimene	6.30	1129	0.03	5.69	1333	0.02
cis-para-Mentha- 2,8-dien-1-ol	6.36*	1132	0.02	9.62*	1629	0.03
trans-Pinocarveol	6.36*	1132	[0.02]	9.27	1600	0.01
trans-Sabinol	6.42	1136	0.07	9.88†	1649	0.25
trans-Verbenol	6.48*	1141	0.02	9.62*	1629	[0.03]
Epoxyterpinolene	6.48*	1141	[0.02]	6.82	1415	0.01
Unknown [m/z 109, 124 (45), 119 (41), 43 (35), 91 (28), 95 (25)...	6.53	1144	0.01	6.99*	1427	[0.10]
Unknown [m/z	6.64	1151	0.01			

109, 81 (39), 41 (38), 95 (24)... 152 (1)]						
Unknown [m/z 109, 43 (75), 137 (46), 67 (31), 93 (25)... 152 (4)]	6.73	1157	0.03			
Borneol	6.82	1162	0.03	9.90*†	1651	[0.25]
α-Phellandren-8-ol	6.84	1164	0.02	10.23*	1678	0.02
cis-Sabinol	6.88	1166	0.08	10.95	1738	0.08
Umbellulone	6.90	1168	0.02	8.98	1578	0.02
Terpinen-4-ol	6.99	1173	0.78	8.67*	1554	0.82
meta-Cymen-8-ol	7.08	1180	0.02	11.62	1794	0.02
α-Terpineol	7.20	1188	0.05	9.90*†	1651	[0.25]
Methylchavicol	7.33	1196	1.90	9.41*	1611	1.95
α-Phellandrene epoxide	7.36	1198	0.02	11.12	1752	0.03
Verbenone	7.43	1202	0.03	9.71	1635	0.05
trans-Piperitol	7.47	1205	0.02	10.51	1700	0.01
trans-Carveol	7.65	1217	0.01	11.58	1791	0.01
Piperitone	8.12	1249	0.03	10.04*	1662	0.11
Linalyl acetate	8.27	1260	0.03	8.27	1523	0.05
Unknown [m/z 109, 41 (22), 81 (14), 43 (11)... 152 (4)]	8.43	1271	0.03			
Bornyl acetate	8.65	1286	0.02	8.35	1529	0.02
Thymol	8.84	1299	0.01	15.26	2132	0.01
Carvacrol	9.07	1309	0.01	15.51	2157	0.02
α-Terpinyl acetate	9.58	1345	0.04	9.83	1646	0.03
α-Copaene	9.93	1370	0.09	7.26	1447	0.10
β-Bourbonene	10.04	1378	0.46	7.60	1472	0.48
1,5-diepi-β-Bourbonene	10.06	1380	0.03	7.49	1464	0.04
β-Elemene	10.18	1388	0.01	8.55*	1544	0.06
Sibirene	10.22	1391	0.07	8.06	1507	0.07
Methyleugenol	10.36	1401	0.09	13.40	1954	0.09
β-Caryophyllene	10.51*	1412	0.07	8.55*	1544	[0.06]
β-Ylangene	10.51*	1412	[0.07]	8.32	1526	0.01
β-Copaene	10.65	1422	0.06	8.47	1538	0.06
trans-α-Bergamotene	10.79	1432	0.04	8.67*	1554	[0.82]
Isogermacrene D	10.85	1438	0.04	9.12	1588	0.04
α-Humulene	10.97	1446	0.01	9.41*	1611	[1.95]
cis-Muurolo-4(15),5-diene	11.06	1453	0.01	9.49	1618	0.02
γ-Muurolole	11.31	1472	0.03	9.81	1643	0.03
Germacrene D	11.34	1474	0.13	9.90*†	1651	[0.25]
Unknown [m/z 91, 93 (92), 105	11.37	1476	0.09	10.04*	1662	[0.11]

(71), 77 (69), 79 (68), 133 (63)... 204 (32)]						
α-Murolene	11.62	1496	0.01	10.23*	1678	[0.02]
γ-Cadinene	11.79	1508	0.02	10.54*	1703	0.11
Kessane	11.93*	1519	0.11	10.61	1709	tr
δ-Cadinene	11.93*	1519	[0.11]	10.54*	1703	[0.11]
Elemicin	12.38	1555	0.02	15.58	2164	0.02
Unknown [m/z 204, 161 (97), 59 (87), 189 (78), 105 (45)...]	13.47	1643	0.01	15.38	2144	0.01
Unknown [m/z 214, 161 (86), 173 (82), 172 (79), 199 (75), 189 (75), 204 (70)...]	13.50	1646	0.02	15.21	2127	0.01
α-Phellandrene dimer I	14.59	1738	0.01			
α-Phellandrene dimer II	15.19	1790	0.03	12.60	1880	0.03
α-Phellandrene dimer III	15.38	1806	0.01	13.24	1939	0.01
(3E)-Cembrene A	16.96	1953	0.02	15.70	2176	0.03
Verticilla- 4(20),7,11-triene	17.48	2002	0.02			
Cembrenol	18.74	2129	0.02			
Serratol	18.88	2143	0.08	19.72	2617	0.09
Total identified		98.04%			98.03%	
Total reported		99.15%			98.89%	

*: Two or more compounds are coeluting on this column

[xx]: Duplicate percentage due to coelutions, not taken account in the identified total

†: Peaks apexes were resolved, but peaks overlapped and were summed for analysis

tr: The compound has been detected below 0.005% of total signal.

Note: no correction factor was applied

R.T.: Retention time (minutes)

R.I.: Retention index