

GC/MS BATCH NUMBER: F40106

ESSENTIAL OIL: FRANKINCENSE SERRATA
BOTANICAL NAME: BOSWELLIA SERRATA
ORIGIN: INDIA

KEY CONSTITUENTS PRESENT IN THIS BATCH OF FRANKINCENSE SERRATA OIL	%
α -THUJENE	68.4
SABINENE	5.6
α -PINENE	5.2
Δ 3-CARENE	3.9
α -PHELLANDRENE	2.2
LIMONENE	1.9
METHYLCHAVICOL	1.8
p-CYMENE	1.4
MYRCENE	1.1

Comments from Robert Tisserand: Fresh, woody-balsamic odor quality. Constituents are in expected amounts.

Date : June 29, 2018

CERTIFICATE OF ANALYSIS – GC PROFILING

SAMPLE IDENTIFICATION

Internal code : 18F21-PTH2-1-CC

Customer identification : Frankincense Serrata - India - F4010684R

Type : Essential oil

Source : *Boswellia serrata*

Customer : Plant Therapy

ANALYSIS

Method: PC-PA-014-17J19 - Analysis of the composition of an essential oil, or other volatile liquid, by FAST GC-FID (in French); identifications validated by GC-MS.

Analyst : Sarah-Eve Tremblay, M. Sc. A., Chimiste

Analysis date : June 22, 2018

Checked and approved by :



Alexis St-Gelais, M. Sc., chimiste 2013-174

Note: This report may not be published, including online, without the written consent from Laboratoire PhytoChemia.

This report is digitally signed, it is only considered valid if the digital signature is intact.

PHYSICOCHEMICAL DATA

Physical aspect: Clear liquid

Refractive index: 1.4590 ± 0.0003 (20 °C)

CONCLUSION

No adulterant, contaminant or diluent has been detected using this method.

ANALYSIS SUMMARY

Identification	DB-5 (%)	DB-WAX (%)	Classe
Ethanol	0.08	0.08*	Aliphatic alcohol
3-Methyl-2-butanone	tr	[0.08]*	Aliphatic ketone
Toluene	0.01	68.44*	Simple phenolic
Unknown	tr	tr	Monoterpene
Unknown	0.02		Monoterpene
Hashishene	0.11	5.26*	Monoterpene
Tricyclene	tr	0.01	Monoterpene
α -Thujene	68.40	[68.44]*	Monoterpene
α -Pinene	5.19	[5.26]*	Monoterpene
Unknown	0.45	3.87*	Monoterpene
Camphene	0.06*	0.06	Monoterpene
α -Fenchene	[0.06]*	0.01	Monoterpene
Thuja-2,4(10)-diene	0.01	5.60*	Monoterpene
β -Pinene	5.93*	0.34	Monoterpene
Sabinene	[5.93]*	[5.60]*	Monoterpene
6-Methyl-5-hepten-2-one	0.01		Aliphatic ketone
Myrcene	1.07	1.10	Monoterpene
α -Phellandrene	2.22*	2.21	Monoterpene
Pseudolimonene	[2.22]*	tr	Monoterpene
Δ^3 -Carene	3.89	[3.87]*	Monoterpene
α -Terpinene	0.38	0.37	Monoterpene
ortho-Cymene	0.07*	1.42*	Simple phenolic
Carvomenthene	[0.07]*	0.02	Aliphatic alcohol
para-Cymene	1.38	[1.42]*	Monoterpene
Unknown	0.12	0.18*	Unknown
1,8-Cineole	2.37*	0.48*	Monoterpenic ether
Limonene	[2.37]*	1.87	Monoterpene
β -Phellandrene	[2.37]*	[0.48]*	Monoterpene
(Z)- β -Ocimene	0.52	0.52	Monoterpene
Unknown	0.06		Unknown
(E)- β -Ocimene	0.26	0.26	Monoterpene
Unknown	0.01		Unknown
γ -Terpinene	0.73	0.72	Monoterpene
cis-Sabinene hydrate	0.05	0.05	Monoterpenic alcohol
Unknown	0.01	0.01	Oxygenated monoterpene
para-Cymenene	0.29*	[0.18]*	Monoterpene
Terpinolene	[0.29]*	0.27	Monoterpene
trans-Sabinene hydrate	0.05	0.04	Monoterpenic alcohol
Unknown	0.01	0.02	Unknown
Linalool	0.10*	0.09	Monoterpenic alcohol
Perillene	[0.10]*	0.01	Monoterpenic ether
β -Thujone	0.20*	[0.18]*	Monoterpenic ketone
Unknown	[0.20]*	0.16	Oxygenated monoterpene
Unknown	0.01		Oxygenated monoterpene
cis-para-Menth-2-en-1-ol	0.06	0.05	Monoterpenic alcohol
α -Campholenal	0.01	tr	Monoterpenic aldehyde
Unknown	0.01		Unknown
4-Hydroxy-4-methylcyclohex-2-	0.02*	0.01*	Aliphatic alcohol

enone			
allo-Ocimene	[0.02]*	0.01	Monoterpene
cis-para-Mentha-2,8-dien-1-ol	0.01	0.09*	Monoterpenic alcohol
trans-Pinocarveol	0.01	0.01*	Monoterpenic alcohol
trans-Sabinol	0.06	0.05	Monoterpenic alcohol
trans-Verbenol	0.02*	0.02	Monoterpenic alcohol
Epoxyterpinolene	[0.02]*	tr	Monoterpenic ether
Unknown	0.01	0.02	Unknown
Unknown	0.01		Oxygenated monoterpene
Unknown	0.03		Oxygenated monoterpene
Borneol	0.03	0.27*	Monoterpenic alcohol
α-Phellandren-8-ol	0.01	0.02	Monoterpenic alcohol
Unknown	0.06*	tr	Oxygenated monoterpene
cis-Sabinol	[0.06]*	0.06*	Monoterpenic alcohol
Umbellulone	0.01	0.02	Monoterpenic ketone
Terpinen-4-ol	0.52	0.54	Monoterpenic alcohol
meta-Cymen-8-ol	0.01	0.02	Monoterpenic alcohol
Cryptone	0.01	[0.01]*	Normonoterpenic ketone
para-Cymen-8-ol	0.01	0.02	Monoterpenic alcohol
α-Terpineol	0.05	[0.27]*	Monoterpenic alcohol
Methylchavicol	1.79	1.81	Phenylpropanoid
α-Phellandrene epoxide	0.02	0.02	Monoterpenic ether
Unknown	0.02*	[0.06]*	Oxygenated monoterpene
Verbenone	[0.02]*	0.01	Monoterpenic ketone
trans-Piperitol	0.01	0.01	Monoterpenic alcohol
trans-Carveol	0.01	0.01	Monoterpenic alcohol
Carvone	0.10*	0.30	Monoterpenic ketone
cis-Carveol	[0.10]*		Monoterpenic alcohol
Cuminal	[0.10]*	0.01	Monoterpenic aldehyde
Carvotanacetone	0.03	[0.09]*	Monoterpenic ketone
Piperitone	0.03*	0.17*	Monoterpenic ketone
Unknown	[0.03]*	tr	Unknown
Linalyl acetate	0.03	0.03	Monoterpenic ester
Bornyl acetate	0.02	0.01	Monoterpenic ester
Thymol	0.02	0.01	Monoterpenic alcohol
Unknown	0.01	0.01	Unknown
α-Terpinyl acetate	0.05	0.02	Monoterpenic ester
α-Copaene	0.10	0.10	Sesquiterpene
β-Bourbonene	0.57*	0.52	Sesquiterpene
1,5-diepi-β-Bourbonene	[0.57]*	0.04	Sesquiterpene
β-Elemene	0.01	0.05*	Sesquiterpene
Sibirene	0.07	0.07	Sesquiterpene
Methyleugenol	0.14	0.12	Phenylpropanoid
β-Caryophyllene	0.09*	[0.05]*	Sesquiterpene
β-Ylangene	[0.09]*	0.03	Sesquiterpene
β-Copaene	0.07	0.06	Sesquiterpene
trans-α-Bergamotene	0.05	0.02	Sesquiterpene
Isogermacrene D	0.04	0.05	Sesquiterpene
cis-Muurolo-4(15),5-diene	0.04	0.02	Sesquiterpene
γ-Muurolole	0.04	0.06	Sesquiterpene
Germacrene D	0.24	[0.27]*	Sesquiterpene
Unknown	0.15	[0.17]*	Sesquiterpene

α-Muurolene	0.02	0.16	Sesquiterpene
γ-Cadinene	0.03	0.17*	Sesquiterpene
δ-Cadinene	0.19*	[0.17]*	Sesquiterpene
Zonarene	[0.19]*	[0.17]*	Sesquiterpene
Kessane	[0.19]*	0.01	Sesquiterpenic ether
Isocaryophyllene epoxide B	0.02		Sesquiterpenic ether
Elemicin	0.03	0.04	Phenylpropanoid
Guaiol	0.01	[0.01]*	Sesquiterpenic alcohol
10-epi-γ-Eudesmol	0.02		Sesquiterpenic alcohol
Unknown	0.02	0.01	Oxygenated sesquiterpene
α-Phellandrene dimer I	0.01		Diterpene
α-Phellandrene dimer II	0.06	0.05	Diterpene
α-Phellandrene dimer IV	0.02	tr	Diterpene
(3E)-Cembrene A	0.04	0.04	Diterpene
Verticilla-4(20),7,11-triene	0.03		Diterpene
Cembrenol	0.03	0.02	Diterpenic alcohol
Serratol	0.17	0.16	Diterpenic alcohol
Total identified	98.53%	98.68%	

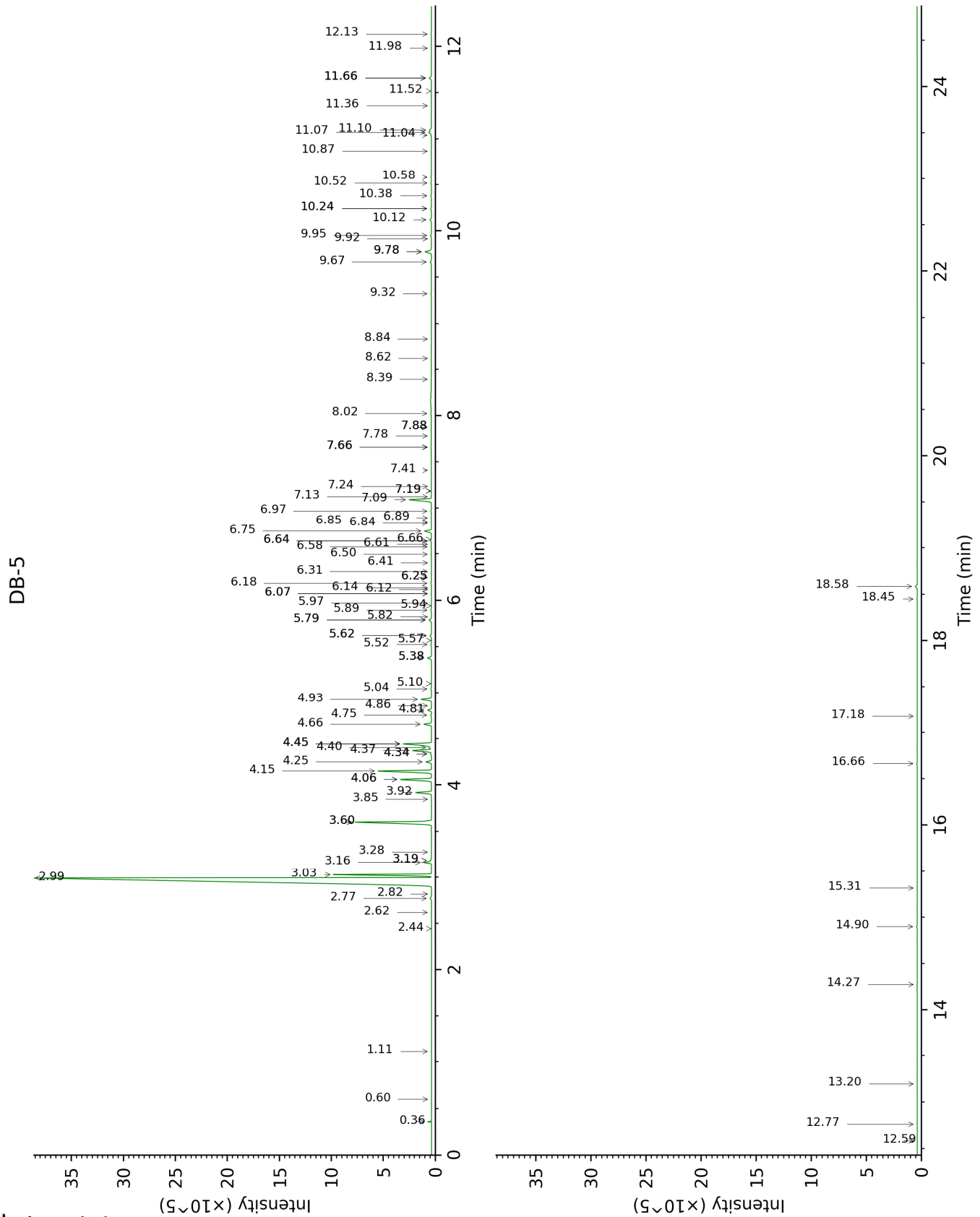
*: Two or more compounds are coeluting on this column

[xx]: Duplicate percentage due to coelutions, not taken account in the identified total

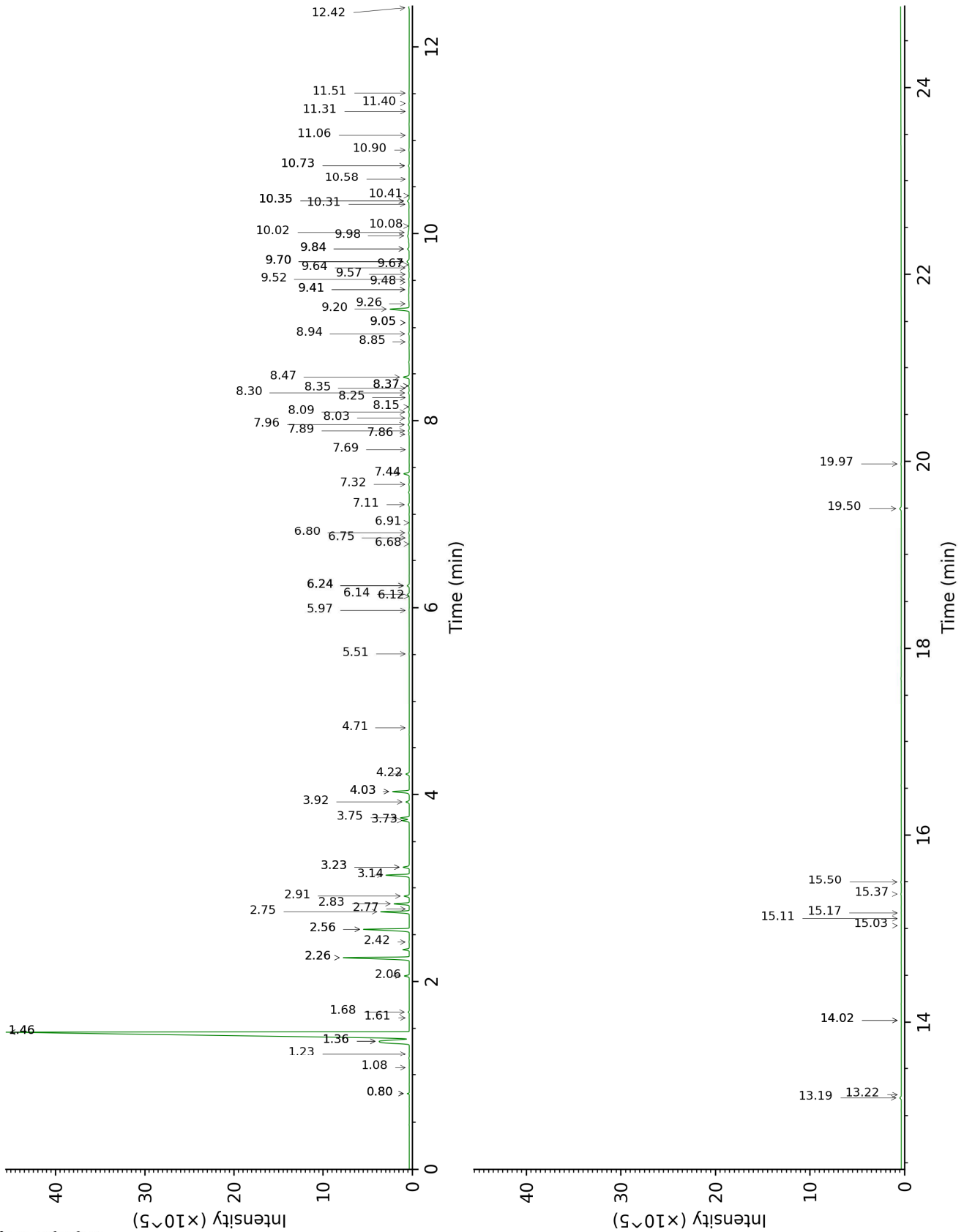
tr: The compound has been detected below 0.005% of total signal.

Note: no correction factor was applied

This page was intentionally left blank. The following pages present the complete data of the analysis.



DB-WAX



FULL ANALYSIS DATA

Identification	Column DB-5			Column DB-WAX		
	R.T	R.I	%	R.T	R.I	%
Ethanol	0.36	498	0.08	0.80*	905	0.08
3-Methyl-2-butanone	0.60	646	tr	0.80*	905	[0.08]
Toluene	1.11	755	0.01	1.46*	1009	68.44
Unknown [m/z 93, 91 (75), 121 (61), 77 (58), 79 (38), 92 (26), 43 (24), 41 (23), 105 (22), 107 (19), 136 (16)]	2.44	890	tr	1.08	949	tr
Unknown [m/z 93, 91 (72), 121 (58), 77 (49), 79 (41), 43 (22), 105 (20), 107 (20), 41 (18), 136 (17), 92 (17)]	2.62	905	0.02			
Hashishene	2.77	915	0.11	1.36*	996	5.26
Tricyclene	2.82	918	tr	1.23	974	0.01
α -Thujene	2.99	930	68.40	1.46*	1009	[68.44]
α -Pinene	3.03	932	5.19	1.36*	996	[5.26]
Unknown [m/z 91, 92 (47), 65 (11)... 134 (1)]	3.16	942	0.45	2.56*	1114	3.87
Camphene	3.19*	943	0.06	1.68	1030	0.06
α -Fenchene	3.19*	943	[0.06]	1.61	1024	0.01
Thuja-2,4(10)-diene	3.28	949	0.01	2.26*	1087	5.60
β -Pinene	3.60*	971	5.93	2.06	1068	0.34
Sabinene	3.60*	971	[5.93]	2.26*	1087	[5.60]
6-Methyl-5-hepten-2-one	3.85	988	0.01			
Myrcene	3.92	993	1.07	2.83	1135	1.10
α -Phellandrene	4.06*	1002	2.22	2.75	1129	2.21
Pseudolimonene	4.06*	1002	[2.22]	2.78	1131	tr
Δ^3 -Carene	4.15	1008	3.89	2.56*	1114	[3.87]
α -Terpinene	4.25	1014	0.38	2.91	1142	0.37
ortho-Cymene	4.34*	1020	0.07	4.03*	1227	1.42
Carvomenthene	4.34*	1020	[0.07]	2.42	1103	0.02
para-Cymene	4.37	1022	1.38	4.03*	1227	[1.42]
Unknown [m/z 109, 43 (58), 95 (26)... 137 (15)...]	4.40	1024	0.12	6.24*	1385	0.18
1,8-Cineole	4.44*	1026	2.37	3.23*	1166	0.48
Limonene	4.44*	1026	[2.37]	3.14	1160	1.87
β -Phellandrene	4.44*	1026	[2.37]	3.23*	1166	[0.48]
(Z)- β -Ocimene	4.66	1040	0.52	3.72	1205	0.52

Unknown [m/z 109, 43 (57), 91 (28), 67 (25), 93 (24), 95 (22), 77 (21), 137 (21), 41 (17), 79 (14)...]	4.76	1046	0.06			
(E)-β-Ocimene	4.81	1050	0.26	3.92	1219	0.26
Unknown [m/z 109, 45 (67), 41 (40), 67 (39), 81 (33), 79 (27), 95 (24), 91 (23), 82 (21), 55 (21), 93 (20)...]	4.86	1053	0.01			
γ-Terpinene	4.93	1057	0.73	3.75	1207	0.72
cis-Sabinene hydrate	5.04	1064	0.05	6.80	1427	0.05
Unknown [m/z 79, 93 (60), 43 (40), 94 (35), 137 (33), 77 (26), 91 (20), 152 (18)]	5.10	1068	0.01	4.71	1276	0.01
para-Cymenene	5.38*	1086	0.29	6.24*	1385	[0.18]
Terpinolene	5.38*	1086	[0.29]	4.22	1240	0.27
trans-Sabinene hydrate	5.52	1095	0.05	7.86	1506	0.04
Unknown [m/z 109, 43 (65), 95 (54), 119 (50), 91 (47)... 149 (8)...]	5.57	1098	0.01	5.97	1366	0.02
Linalool	5.62*	1101	0.10	7.96	1514	0.09
Perillene	5.62*	1101	[0.10]	6.12	1377	0.01
β-Thujone	5.79*	1112	0.20	6.24*	1385	[0.18]
Unknown [m/z 109, 81 (54), 91 (32), 79 (22)...]	5.79*	1112	[0.20]	6.14	1379	0.16
Unknown [m/z 109, 91 (57), 93 (47), 81 (44), 77 (40)... 154 (1)]	5.82	1114	0.01			
cis-para-Menth-2-en-1-ol	5.90	1119	0.06	8.09	1524	0.05
α-Campholenal	5.94	1122	0.01	6.91	1435	tr
Unknown [m/z 111, 43 (22), 55 (14), 41 (12), 110 (11)...]	5.97	1123	0.01			
4-Hydroxy-4-methylcyclohex-2-enone	6.07*	1130	0.02	14.02*	2034	0.01
allo-Ocimene	6.07*	1130	[0.02]	5.51	1333	0.01
cis-para-Mentha-	6.12	1133	0.01	9.41*	1627	0.09

2,8-dien-1-ol						
<i>trans</i> -Pinocarveol	6.14	1134	0.01	9.05*	1599	0.01
<i>trans</i> -Sabinol	6.18	1137	0.06	9.67	1649	0.05
<i>trans</i> -Verbenol	6.25*	1141	0.02	9.48	1634	0.02
Epoxyterpinolene	6.25*	1141	[0.02]	6.68	1418	tr
Unknown [m/z 109, 124 (45), 119 (41), 43 (35), 91 (28), 95 (25)...]	6.31	1145	0.01	6.74	1423	0.02
Unknown [m/z 109, 81 (39), 41 (38), 95 (24)... 152 (1)]	6.40	1151	0.01			
Unknown [m/z 109, 43 (75), 137 (46), 67 (31), 93 (25)... 152 (4)]	6.50	1157	0.03			
Borneol	6.58	1162	0.03	9.70*	1652	0.27
α -Phellandren-8- ol	6.61	1164	0.01	10.08	1683	0.02
Unknown [m/z 95, 110 (43), 81 (28), 41 (15)... 152 (8)]	6.64*	1167	0.06	7.69	1493	tr
<i>cis</i> -Sabinol	6.64*	1167	[0.06]	10.73*	1737	0.06
Umbellulone	6.66	1168	0.01	8.85	1583	0.02
Terpinen-4-ol	6.75	1174	0.52	8.47	1553	0.54
meta-Cymen-8-ol	6.84	1179	0.01	11.40	1794	0.02
Cryptone	6.85	1180	0.01	9.05*	1599	[0.01]
para-Cymen-8-ol	6.90	1183	0.01	11.51	1803	0.02
α -Terpineol	6.97	1188	0.05	9.70*	1652	[0.27]
Methylchavicol	7.09	1196	1.79	9.20	1610	1.81
α -Phellandrene epoxide	7.13	1198	0.02	10.90	1751	0.02
Unknown [m/z 109, 91 (100), 81 (88), 94 (75), 119 (74), 96 (73), 41 (63)... 150 (2)]	7.19*	1202	0.02	10.73*	1737	[0.06]
Verbenone	7.19*	1202	[0.02]	9.57	1641	0.01
<i>trans</i> -Piperitol	7.24	1205	0.01	10.32	1702	0.01
<i>trans</i> -Carveol	7.41	1217	0.01	11.31	1786	0.01
Carvone	7.66*	1233	0.10	9.98	1674	0.30
<i>cis</i> -Carveol	7.66*	1233	[0.10]			
Cuminal	7.66*	1233	[0.10]	10.58	1724	0.01
Carvotanacetone	7.78	1242	0.03	9.41*	1627	[0.09]
Piperitone	7.88*	1248	0.03	9.84*	1663	0.17
Unknown [m/z 43, 97 (69), 107 (46), 41 (28), 55 (21), 109 (20)...]	7.88*	1248	[0.03]	11.06	1765	tr
Linalyl acetate	8.02	1258	0.03	8.15	1528	0.03

Bornyl acetate	8.39	1283	0.02	8.25	1536	0.01
Thymol	8.62	1298	0.02	15.03	2132	0.01
Unknown [m/z 111, 126 (93), 43 (90), 71 (60)...]	8.84	1313	0.01	15.17	2146	0.01
α -Terpinyl acetate	9.32	1348	0.05	9.64	1646	0.02
α -Copaene	9.67	1372	0.10	7.11	1450	0.10
β -Bourbonene	9.78*	1380	0.57	7.44	1474	0.52
1,5-diepi- β - Bourbonene	9.78*	1380	[0.57]	7.32	1466	0.04
β -Elemene	9.92	1389	0.01	8.37*	1546	0.05
Sibirene	9.95	1392	0.07	7.89	1509	0.07
Methyleugenol	10.12	1404	0.14	13.19	1955	0.12
β -Caryophyllene	10.24*	1413	0.09	8.37*	1546	[0.05]
β -Ylangene	10.24*	1413	[0.09]	8.03	1519	0.03
β -Copaene	10.38	1423	0.07	8.30	1540	0.06
<i>trans</i> - α - Bergamotene	10.52	1434	0.05	8.35	1544	0.02
Isogermacrene D	10.58	1438	0.04	8.94	1590	0.05
<i>cis</i> -Muuro- 4(15),5-diene	10.87	1460	0.04	9.26	1615	0.02
γ -Muuro- lone	11.04	1473	0.04	9.52	1636	0.06
Germacrene D	11.07	1475	0.24	9.70*	1652	[0.27]
Unknown [m/z 91, 93 (92), 105 (71), 77 (69), 79 (68), 133 (63)... 204 (32)]	11.10	1477	0.15	9.84*	1663	[0.17]
α -Muuro- lone	11.36	1496	0.02	10.02	1677	0.16
γ -Cadinene	11.52	1509	0.03	10.35*	1704	0.17
δ -Cadinene	11.66*	1520	0.19	10.35*	1704	[0.17]
Zonarene	11.66*	1520	[0.19]	10.35*	1704	[0.17]
Kessane	11.66*	1520	[0.19]	10.41	1709	0.01
Isocaryophyllene epoxide B	11.98	1545	0.02			
Elemicin	12.13	1557	0.03	15.37	2166	0.04
Guaiol	12.59	1593	0.01	14.02*	2034	[0.01]
10-epi- γ - Eudesmol	12.76	1607	0.02			
Unknown [m/z 204, 161 (97), 59 (87), 189 (78), 105 (45)...]	13.20	1643	0.02	15.11	2140	0.01
α -Phellandrene dimer I	14.27	1734	0.01			
α -Phellandrene dimer II	14.90	1788	0.06	12.42	1884	0.05
α -Phellandrene dimer IV	15.32	1825	0.02	13.22	1958	tr
(3E)-Cembrene A	16.66	1950	0.04	15.50	2179	0.04
Verticilla-	17.18	1999	0.03			

4(20),7,11-triene						
Cembrenol	18.45	2126	0.03	19.97	2678	0.02
Serratol	18.58	2140	0.17	19.50	2621	0.16
Total identified		98.53%			98.68%	
Total reported		99.45%			98.91%	

*: Two or more compounds are coeluting on this column

[xx]: Duplicate percentage due to coelutions, not taken account in the identified total

tr: The compound has been detected below 0.005% of total signal.

Note: no correction factor was applied

R.T.: Retention time (minutes)

R.I.: Retention index