

GC/MS BATCH NUMBER: F80101

ESSENTIAL OIL: FRANKINCENSE FREREANA

BOTANICAL NAME: BOSWELLIA FREREANA

ORIGIN: SOMALIA

KEY CONSTITUENTS PRESENT IN THIS BATCH OF FRANKINCENSE FREREANA OIL	%
α -THUJENE	55.1
p-CYMENE	11.5
SABINENE	9.1
TERPINEN-4-OL	4.6
α -PINENE	3.3
THUJA-2,4(10)DIENE	1.8
α -PHELLANDRENE	1.6
1,8-CINEOLE	1.7
LIMONENE	1.6

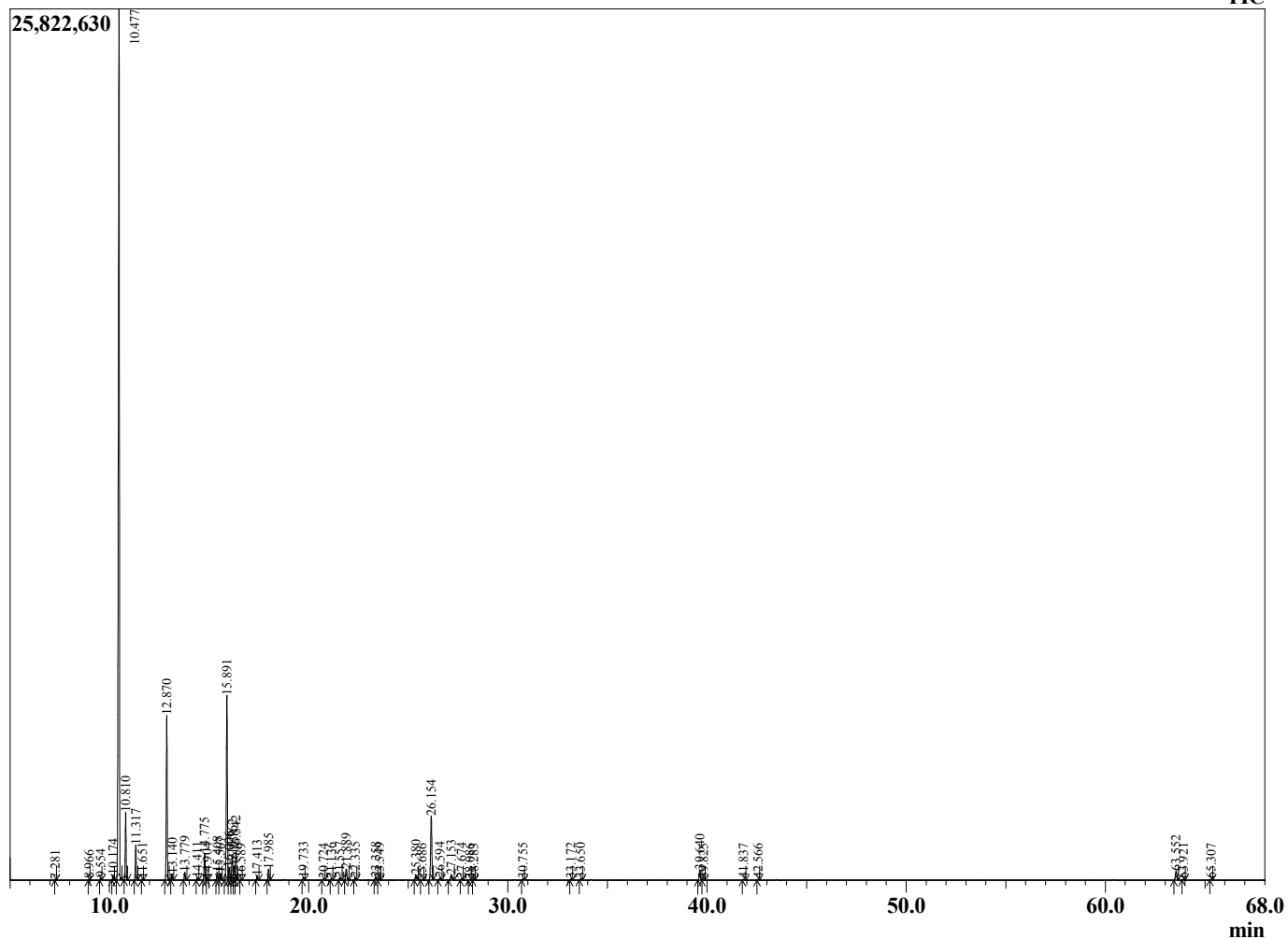
Comments from Robert Tisserand: A delightful Boswellia frereana oil, with constituents in expected amounts for a high alpha-thujene oil.

Sample Information

Analyzed by : Dr. Robert S. Pappas
 Analyzed : 3/18/2015 7:13:55 AM
 Sample Type : Essential Oil
 Sample Name : Frankincense, frereana (Plant Therapy)
 Sample ID : FE000103
 Injection Volume : 0.10
 Data File : C:\GCMSsolution\Data\EOU\Frankincense\Frankincense frereana Plant Therapy



ogram Frankincense, frereana (Plant Therapy) C:\GCMSsolution\Data\EOU\Frankincense\Frankincense frereana Plant Therapy FE00
 TIC



R.Time	Name	Area%
7.281	cis-Salvene	0.03
8.966	Unidentified monoterpene	0.04
9.554	Santolina triene	0.10
10.174	Pinene isomer	0.25
10.477	Thujene <alpha->	55.13
10.810	Pinene <alpha->	3.32
11.317	Thuja-2,4(10)diene	1.75
11.651	Camphene	0.05
12.870	Sabinene	9.06
13.140	Pinene <beta->	0.34
13.779	Myrcene	0.44
14.411	Menthene <1-p>	0.13
14.775	Phellandrene <alpha->	1.58
14.904	3-Carene	0.06
15.408	Terpinene <alpha->	0.47
15.567	Cymene <ortho->	0.41
15.891	Cymene <para->	11.54
16.006	Thujol	0.73
16.162	Limonene	1.57
16.258	Phellandrene <beta>	0.84
16.342	1,8-cineole	1.69
16.589	Ocimene <Z-beta>	0.05
17.413	trans-2-Caren-4-ol	0.26
17.985	Terpinene <gamma>	0.67
19.733	Terpinolene	0.15
20.724	Linalool	0.07
21.136	Thujone <cis>	0.07
21.557	cis-2-Caren-4-ol	0.14
21.889	Thujone <trans>	0.84
22.335	Menth-2-en-1-ol <cis-p>	0.14
23.358	Sabinol <trans>	0.19
23.549	Menth-2-en-1-ol <trans-p>	0.08
25.380	UFrankincense	0.40
25.686	Carvenone	0.05
26.154	Terpinen-4-ol	4.59
26.594	p-Cymen-8-ol	0.16
27.153	Terpineol <beta>	0.37
27.674	Sabinol <cis>	0.11
28.086	Piperitol <cis>	0.05
28.283	Caprylyl acetate	0.05
30.755	Phellandral	0.08
33.172	Bornyl acetate	0.08
33.650	Thymol	0.06
39.640	Bourbonene <alpha>	0.78
39.825	Bourbonene <beta>	0.05
41.837	Ylangene <beta>	0.07
42.566	Copaene <beta>	0.06
63.552	Phellanderene alpha dimer	0.73
63.921	Phellanderene alpha dimer	0.07
65.307	Phellandrene <alpha>dimer	0.06
		100.00

Comments:

Typical Ranges of Main Components: