



PLANT THERAPY  
100% PURE ESSENTIAL OILS

GC/MS BATCH NUMBER: E40101

---

**ESSENTIAL OIL:** EUCALYPTUS RADIATA  
**BOTANICAL NAME:** EUCALYPTUS RADIATA  
**ORIGIN:** AUSTRALIA

KEY CONSTITUENTS PRESENT IN THIS BATCH OF EUCALYPTUS RADIATA OIL	%
1,8-CINEOLE	67.8
$\alpha$ -TERPINEOL	10.9
LIMONENE	5.9
$\alpha$ -PINENE	2.2
SABINENE	1.6
TERPINYL ACETATE	1.6
TERPINEN-4-OL	1.4
$\beta$ -MYRCENE	1.4
GERANIOL	1.0

Comments from Robert Tisserand: Both olfactory assessment and the analysis show a genuine, good quality Eucalyptus radiata essential oil.

**CUSTOMER :**

**PLANT THERAPY  
126 Locust Street South  
Twin Falls, ID 83 301  
USA**

**Sample nature:** ESSENTIAL OIL  
**Botanical species:** EUCALYPTUS RADIATA  
**Reference name:** EUCALYPTUS RADIATA  
**Batch number:** 00576  
**Origin:** AUSTRALIA  
**Part:** LEAF  
**Pyrenessences reference:** D135  
**Date of reception:** 03/12/2015  
**Date analysis:** 03/16/2015  
**Packaging:** Amber flask of 4 ml – ambient temperature  
**Analysis:** Classic

**Validated report by :**

**Daniel DANTIN**



**GAS CHROMATOGRAPHY** norm NF ISO 11024

**Analysis conditions :**

CPG 6890 / MS 5973 – Column : VF WAX polar 60 m × 0,25 mm × 0,5 µm

CPG 6890 FID - Column : VF WAX polar 60 m × 0,25 mm × 0,5 µm

Temperature program : 6 mn to 60 °C -2 °C/mn→250 °C - 20mn to 250 °C

Carrier gas He : 23 psis/MS – 30 psis/FID

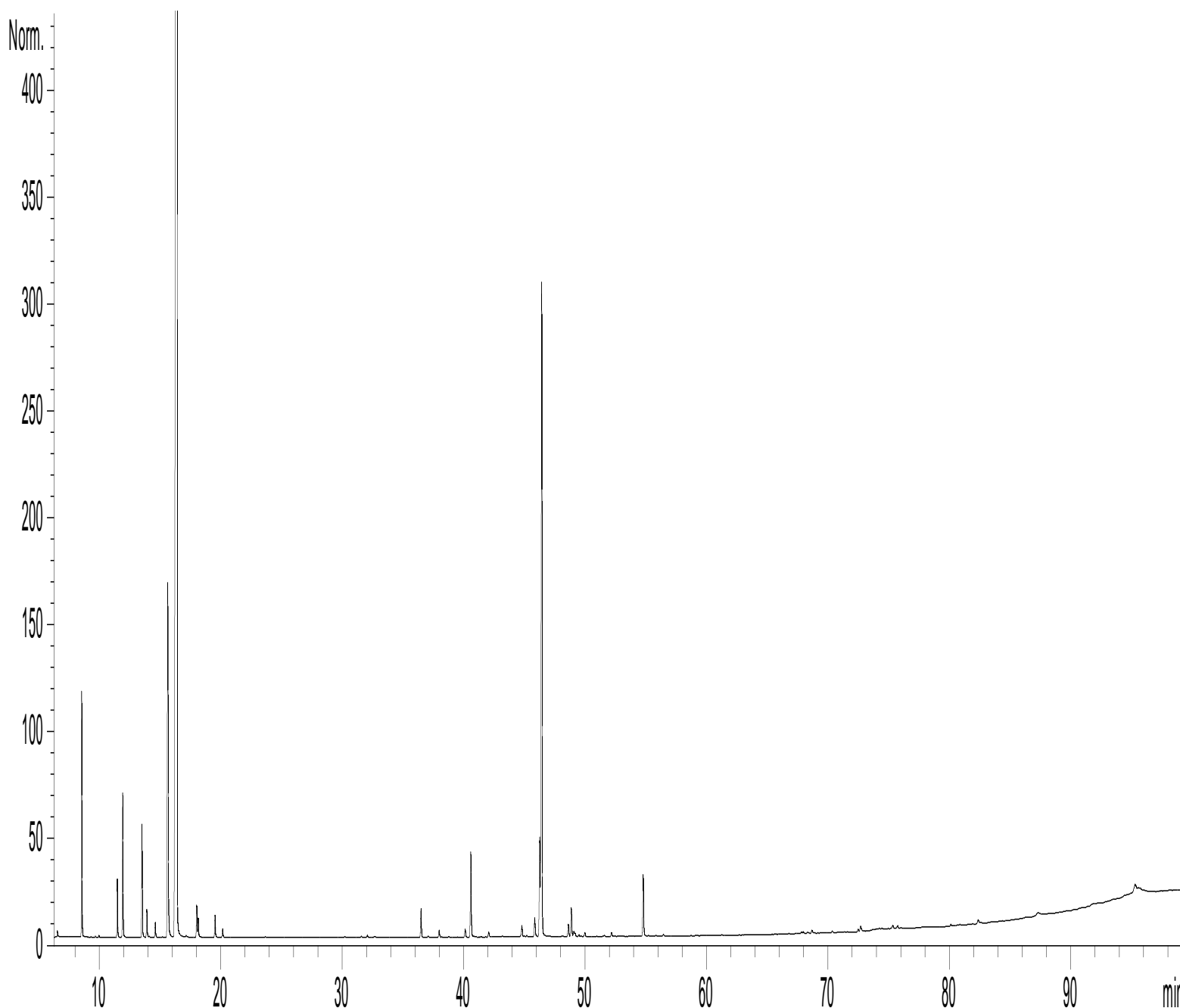
Sample injection / split : 1 µl of 10 % solution in hexane,

Mass range : 30 to 350, Oil components are identified by a combination of retention times  
(our own database) and mass spectra library NKS 75 000 records,

Percentages are calculated from GC/FID peaks areas without using corrections factors,

**Chromatographic profile (GC/FID)**

FID1 A, (Z:\PLANTHERIER76D135.D)



**Identification results 1 : EUCALYPTUS RADIATA BATCH N°**

Peak	RT (min)	Compound name	%	Norm (%)	Allergens (%)
1	6,6	ETHANOL	0,07		
2	8,6	$\alpha$ -PINENE	2,20		
3	8,6	$\alpha$ -THUYENE	0,20		
4	9,7	$\alpha$ -FENCHENE	0,01		
5	10,0	CAMPHENE	0,01		
6	11,5	$\beta$ -PINENE	0,68		
7	11,9	SABINENE	1,64		
8	13,5	$\beta$ -MYRCENE	1,35		
9	13,9	$\alpha$ -PHELLANDRENE	0,36		
10	14,1	$\psi$ -LIMONENE	0,02		
11	14,6	$\alpha$ -TERPINENE	0,21		
12	15,2	2,3-DEHYDRO-1,8-CINEOLE	0,01		
13	15,6	<b>LIMONENE</b>	<b>5,94</b>		5,94
14	16,4	<b>1,8-CINEOLE</b>	<b>67,77</b>		
15	17,1	Cis- $\beta$ -OCIMENE	0,02		
16	18,0	$\gamma$ -TERPINENE	0,43		
17	18,1	Trans- $\beta$ -OCIMENE	0,28		
18	19,5	p-CYMENE	0,34		
19	20,2	TERPINOLENE	0,13		
20	22,1	PINOL	0,01		
21	23,7	6-METHYL-5-HEPTEN-2-ONE	0,01		
22	26,3	PINENE EPOXIDE	0,01		
23	30,2	LINALOL Cis-OXIDE	0,02		
24	31,6	Trans-THUYANOL	0,02		
25	32,1	LINALOOL Trans-OXIDE	0,04		
26	32,7	NERYL OXIDE	0,01		
27	32,7	CITRONELLAL	0,01		
28	35,7	CAMPHOR	0,01		
29	36,5	LINALOOL	0,42		0,42
30	36,7	Cis-THUYANOL	0,04		
31	37,1	LINALYL ACETATE	0,02		
32	38,0	Trans-p-MENTH-2-EN-1-OL	0,11		
33	38,8	SESQUITERPENE	0,01		
34	40,1	$\beta$ -ELEMENE	0,14		
35	40,6	TERPINENE-4-OL	1,39		
36	40,7	SESQUITERPENE	0,02		
37	42,1	Cis-p-MENTH-2-EN-1-OL	0,08		
38	43,2	AROMADENDRENE	0,02		
39	44,7	ETHYL BENZOATE	0,02		
40	44,8	$\delta$ -TERPINEOL	0,07		
41	45,0	CRYPTONE	0,02		
42	45,2	Cis-PIPERITOL	0,03		
43	45,9	NERAL	0,34		0,34
44	46,3	TERPENYL ACETATE	1,55		
45	46,4	$\alpha$ -TERPINEOL	<b>10,94</b>		

**Identification results 2 : EUCALYPTUS RADIATA BATCH N° 00576**

Peak	RT (min)	Compound name	%	Norm (%)	Allergens (%)
46	47,1	LEDENE	0,01		
47	48,2	2-HYDROXYCINEOL ACETATE	0,01		
48	48,6	PIPERITONE	0,21		
49	48,9	GERANIAL	0,50		0,50
50	49,1	BICYCLOGERMACRENE	0,10		
51	49,2	Cis-PIPERITOL	0,06		
52	49,5	GERANYL ACETATE	0,03		
53	49,7	LINALOOL OXIDE ISOMER	0,01		
54	50,0	CITRONELLOL	0,07		0,07
55	51,5	δ-CADINENE	0,01		
56	51,6	γ-CADINENE	0,02		
57	52,2	NEROL	0,07		
58	54,8	GERANIOL	1,00		1,00
59	55,2	p-CYMENE-8-OL	0,01		
60	55,8	2-exo-HYDROXYCINEOL	0,01		
61	56,4	2-BUTANONE-4-PHENYL	0,03		
62	61,2	Trans-JASMONE	0,01		
63	66,8	GLOBULOL	0,01		
64	67,8	METHYL CINNAMATE	0,03		
65	68,3	1,4-DIHYDROXY-p-MENTH-2-ENE ISOMER	0,02		
66	68,4	SESQUITERPENOL	0,01		
67	68,7	GUAIOL	0,07		
68	69,8	ROSIFOLIOL	0,01		
69	70,4	SPATHULENOL	0,03		
70	71,4	1,4-DIHYDROXY-p-MENTH-2-ENE ISOMER	0,01		
71	72,5	γ-EUDESOL	0,05		
72	72,7	THYMOL	0,13		
73	74,0	CARVACROL	0,01		
74	75,3	α-EUDESOL	0,06		
75	75,7	β-EUDESOL	0,06		
76	80,1	GERANIC ACID	0,03		
77	82,4	FARNESOL	0,08		0,08
78	87,3	Trans-TOTAROL	0,19		
		<b>TOTAL</b>	<b>99,99</b>		<b>8,35</b>