



GC/MS BATCH NUMBER: E30110

ESSENTIAL OIL: EUCALYPTUS GLOBULUS ORGANIC

BOTANICAL NAME: EUCALYPTUS GLOBULUS

ORIGIN: INDIA

KEY CONSTITUENTS PRESENT IN THIS BATCH OF EUCALYPTUS GLOBULUS ORGANIC OIL	%
1,8-CINEOLE + LIMONENE	89.1
p-CYMENE	4.9
α -PINENE	1.9
γ -TERPINENE	1.9
α -PHELLANDRENE	1.0

Comments from Robert Tisserand: Intense, green, medicinal odor profile. Constituents are in expected amounts.

Date : December 28, 2017

SAMPLE IDENTIFICATION

Internal code : 17L27-PTH1-1-CC

Customer identification : Eucalyptus Glob Organic - India - E3011076R

Type : Essential oil

Source : *Eucalyptus globulus*

Customer : Plant Therapy

ANALYSIS

Method : PC-PA-001-15E06, "Analysis of the composition of a liquid essential oil by GC-FID" (in French).

Identifications double-checked by GC-MS

Analyst : Alexis St-Gelais, M. Sc., chimiste

Analysis date : 2017-12-28

Checked and approved by :

Alexis St-Gelais, M. Sc., chimiste 2013-174

Note: This report may not be published, including online, without the written consent from Laboratoire PhytoChemia.

This report is digitally signed, it is only considered valid if the digital signature is intact.

IDENTIFIED COMPOUNDS

Identification	Column: BP5			Column: WAX			Molecular Class
	R.T.	R.I.	%	%	R.I.	R.T.	
Tricyclene	3.21	914	tr				Monoterpene
α-Thujene	3.32	920	0.01	1.79	941	1.10*	Monoterpene
α-Pinene	3.43	927	1.93	[1.79]	941	1.10*	Monoterpene
α-Fenchene	3.69	942	0.01	0.01	997	1.38*	Monoterpene
Camphene	3.71	944	0.02	[0.01]	997	1.38*	Monoterpene
Thuja-2(4),10-diene	3.81	949	0.01				Monoterpene
β-Pinene	4.21	973	0.26	0.23	1036	1.72	Monoterpene
Myrcene	4.49	990	0.60	1.41	1113	2.45†	Monoterpene
α-Phellandrene	4.77	1006	1.03	[1.41]	1107	2.38†	Monoterpene
α-Terpinene	4.96	1016	0.20	0.28	1119	2.53	Monoterpene
1,8-Cineole	5.35*	1037	93.67	89.14	1153	2.98*	Monoterp. ether
Limonene	5.35*	1037	[93.67]	[89.14]	1153	2.98*	Monoterpene
para-Cymene	5.35*	1037	[93.67]	4.87	1206	3.67*	Monoterpene
cis-β-Ocimene	5.38	1039	0.12	2.04	1186	3.41*	Monoterpene
trans-β-Ocimene	5.55	1048	0.11	[4.87]	1206	3.67*	Monoterpene
γ-Terpinene	5.75	1059	1.86	[2.04]	1186	3.41*	Monoterpene
cis-Sabinene hydrate	6.02	1073	0.01	0.01	1404	6.69	Monoterp. alcohol
Terpinolene	6.21	1084	0.02				Monoterpene
para-Cymenene	6.44	1096	0.01	0.01	1359	5.98	Monoterpene
trans-Pinocarveol	7.65	1141	tr				Monoterp. alcohol
α-Terpineol	9.53	1205	0.01	0.01	1614	13.09	Monoterp. alcohol
Piperitone	11.83	1255	0.03	0.01	1620	13.40	Monoterp. ketone
Total identified			99.91%	99.81%			

*: Two or more compounds are coeluting on this column

[xx]: Duplicate percentage due to coelutions, not taken account in the identified total

†: Peaks apexes were resolved, but peaks overlapped and were summed for analysis

Note: no correction factor was applied

OTHER DATA

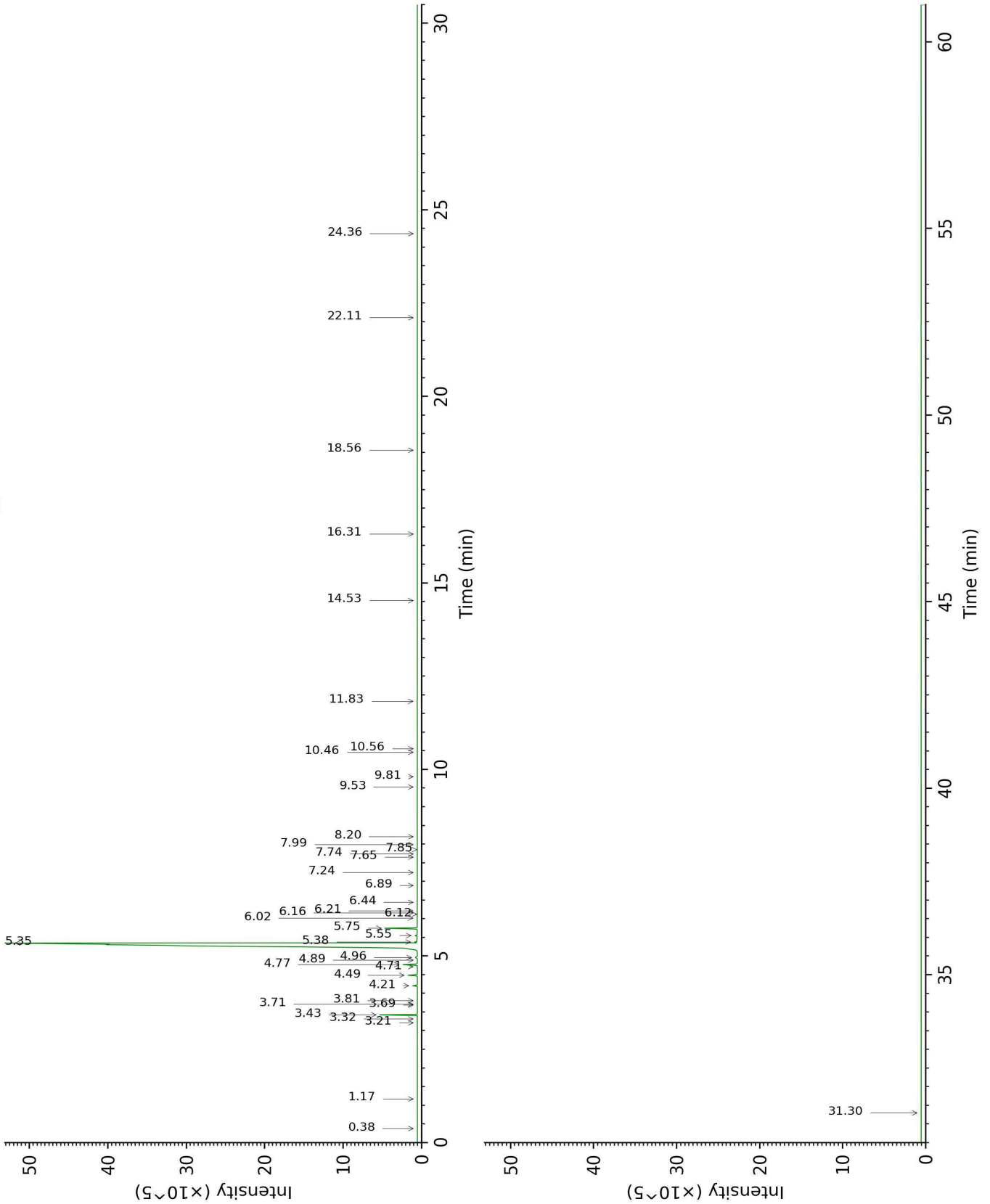
Physical aspect : Clear liquid

Refractive index : 1.4605 ± 0.0003 (20 °C)

CONCLUSION

No adulterant, contaminant or diluent were detected using this method.

17L27-PTH1-1-CC_BP5



17L27-PTH1-1-CC_WAX

