



PLANT THERAPY

100% PURE ESSENTIAL OILS

GC/MS BATCH NUMBER: E30101

ESSENTIAL OIL: EUCALYPTUS GLOBULUS ORGANIC
BOTANICAL NAME: EUCALYPTUS GLOBULUS ORGANIC
ORIGIN: INDIA

KEY CONSTITUENTS PRESENT IN THIS BATCH OF ORGANIC EUCALYPTUS GLOBULUS OIL	%
1,8-CINEOLE	80.3
α -PINENE	8.0
LIMONENE	7.6
p-CYMENE	3.0
γ -TERPINENE	0.2
Trans-PINOCARVEOL	Trace

Comments from Robert Tisserand: Acceptable odor profile. It does not quite conform to the AFNOR standard for rectified Eucalyptus globulus 80/85%, since two compounds that should be there in trace amounts were not detected, but this does not concern me.

Customer :

**PLANT THERAPY
126 Locust Street South
Twin Falls, ID 83 301
USA**

Sample nature: ESSENTIAL OIL
Botanical name: EUCALYPTUS GLOBULUS ORGANIC
Reference name: EUCALYPTUS ESSENTIAL OIL
Batch number: E30101
Origin: INDIA
Part: LEAF
Pyrenessences reference: E016
Date of reception: 06/15/2015
Date analysis: 06/26/2015
Packaging: Amber flask of 5 ml - ambient temperature
Wanted analysis: Classic analysis

Report validated by :

Daniel Dantin



GAS CHROMATOGRAPHY (norm NF ISO 11024)

Conditions :

CPG 6890 / MS 5973 AGILENT – Column : VF WAX polar 60 m × 0,25 mm × 0,5 µm

CPG 6890 FID AGILENT - Column : VF WAX polar 60 m × 0,25 mm × 0,5 µm

Temperature program : 6 min à 60°C – 2°C/min → 250°C – 10 min 250 °C

Carrier gas He : 23 psis/MS – 30 psis/FID

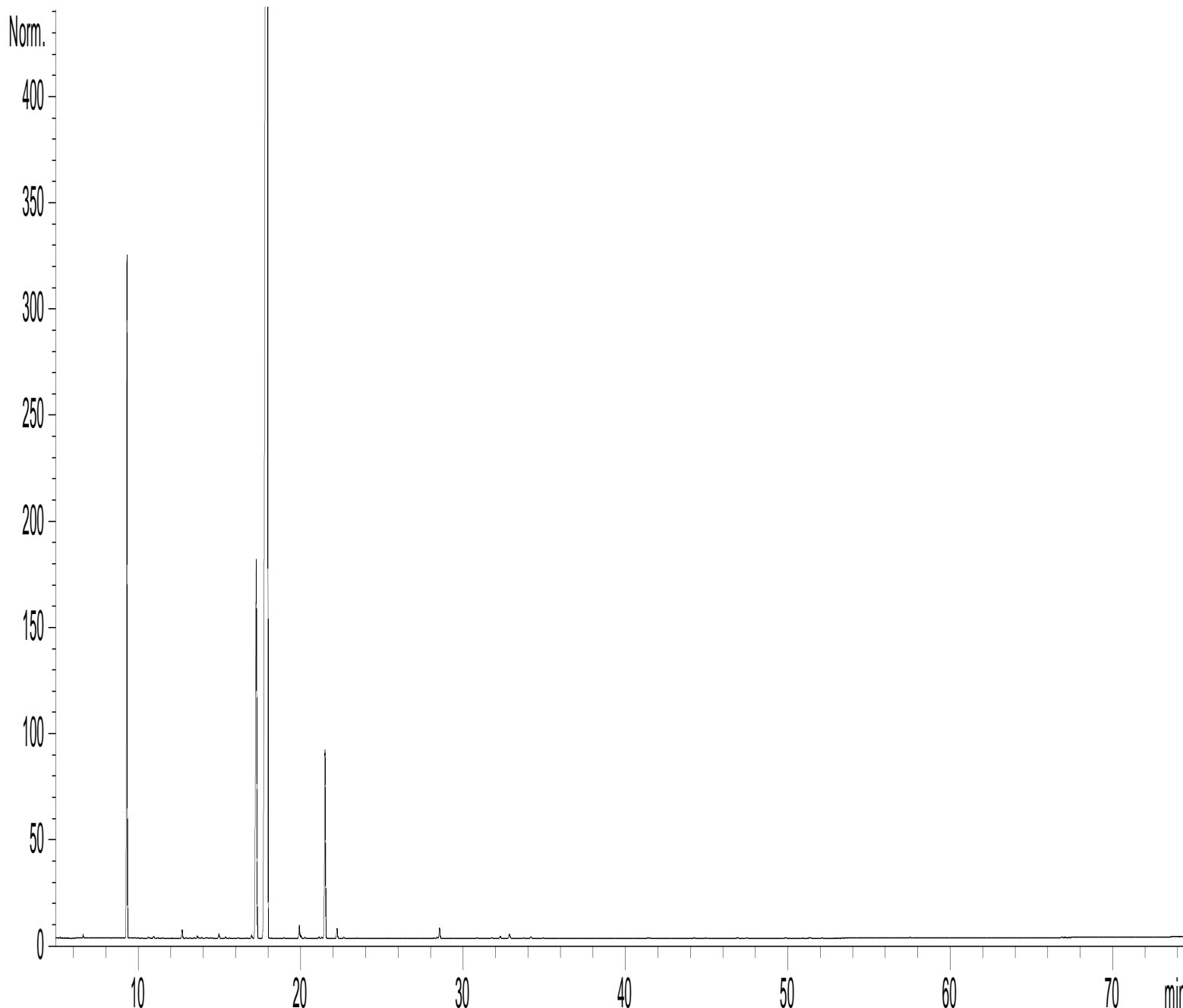
Sample injection / split : 1 µl of 10% solution in hexane,

Mass range : 30 to 350, Oil components are identified by a combination of retention times (our own database) and mass spectra library NKS 75 000 records,

Percentages are calculated from GC/FID peaks areas without using corrections factors,

Chromatographic profile (GC/FID) :

FID1 A, (Z:\PLANTHER\EG15E016.D)



Identification results – EUCALYPTUS GLOBULUS BATCH E30101

Peak	RT (min)	Compound	%	Norm (%)	Allergens (%)
1	6,6	ISOVALERALDEHYDE	0,03		
2	9,3	α-PINENE	8,01	Tr. - 12	
3	9,4	α-THUYENE	0,10		
4	10,6	α-FENCHENE	0,01		
5	10,9	CAMPHENE	0,03		
6	12,7	β-PINENE	0,12		
7	13,6	COMPONENT Mw=152	0,03		
8	15,0	β-MYRCENE	0,06		
9	15,4	α-PHELLANDRENE	0,02		
10	15,6	ψ-LIMONENE	0,01		
11	16,1	α-TERPINENE	0,01		
12	17,0	ISOAMYL ALCOHOL	0,04		
13	17,2	LIMONENE	7,55	2 - 15	7,55
14	17,9	1,8-CINEOLE	80,25	> 80	
15	18,9	Cis-β-OCIMENE	0,01		
16	19,9	γ-TERPINENE	0,20		
17	20,0	Trans-β-OCIMENE	0,03		
18	20,2	3-OCTANONE	0,02		
19	21,1	3,8-p-MENTHADIENE	0,02		
20	21,3	m-CYMENE	0,02		
21	21,5	p-CYMENE	2,97	1 - 10	
22	22,2	TERPINOLENE	0,16		
23	22,6	ISOTERPINOLENE	0,02		
24	28,4	α-PINENE EPOXIDE	0,02		
25	28,5	3-OCTANOL	0,16		
26	31,7	Cis-3-METHYLCYCLOHEXANOL	0,01		
27	32,3	α,p-DIMETHYLSTYRENE	0,03		
28	32,8	trans-3-METHYLCYCLOHEXANOL	0,08		
29	34,2	ISOMENTHONE + PINENOL	0,03		
30	43,2	AROMADENDRENE	-	Tr.	
31	43,5	Trans-PINOCARVEOL	Tr.	Tr. - 6	
32	51,4	CARVONE	0,01		
33	56,7	Trans-CARVEOL	0,02		
34	57,5	p-CYMENE-8-OL	0,01		
35	70,4	GLOBULOL	-	Tr.	
		TOTAL	99,99		7,55