



GC/MS BATCH NUMBER: E20106

ESSENTIAL OIL: EUCALYPTUS GLOBULUS
BOTANICAL NAME: EUCALYPTUS GLOBULUS
ORIGIN: CHINA

KEY CONSTITUENTS PRESENT IN THIS BATCH OF EUCALYPTUS GLOBULUS OIL	%
1,8-CINEOLE + LIMONENE	87.7
γ-TERPINENE	4.2
p-CYMENE	3.4
α-PINENE	2.2

Comments from Robert Tisserand: Classic green, penetrating odor profile. The quantities of 1,8-cineole and limonene cannot be determined from this report. Otherwise, the oil conforms to the ISO standard.

Date : October 25, 2017

SAMPLE IDENTIFICATION

Internal code : 17J17-PTH3-1-CC

Customer identification : Eucalyptus Globulus - China - E2010673R

Type : Essential oil

Source : *Eucalyptus globulus*

Customer : China

ANALYSIS

Method : PC-PA-001-15E06, "Analysis of the composition of a liquid essential oil by GC-FID" (in French).

Identifications double-checked by GC-MS

Analyst : Sylvain Mercier, M. Sc., chimiste

Analysis date : 2017-10-25

Checked and approved by :

Alexis St-Gelais, M. Sc., chimiste 2013-174

Note: This report may not be published, including online, without the written consent from Laboratoire PhytoChemia.

This report is digitally signed, it is only considered valid if the digital signature is intact.

IDENTIFIED COMPOUNDS

Identification	Column: BP5			Column: WAX			Molecular Class
	R.T.	R.I.	%	%	R.I.	R.T.	
α-Thujene	3.32	921	0.01	2.09	954	1.18*	Monoterpene
α-Pinene	3.43	927	2.15	[2.09]	954	1.18*	Monoterpene
Camphene	3.72	944	0.02	0.02	1004	1.47	Monoterpene
β-Pinene	4.21	973	0.34	0.32	1042	1.84	Monoterpene
Myrcene	4.49	990	0.71	1.04	1120	2.61*	Monoterpene
α-Phellandrene	4.77	1006	0.85	0.57	1114	2.52	Monoterpene
α-Terpinene	4.96	1016	0.17	[1.04]	1120	2.61*	Monoterpene
1,8-Cineole	5.35*	1037	90.67	87.71	1161	3.14*	Monoterp. ether
para-Cymene	5.35*	1037	[90.67]	3.35	1214	3.86	Monoterpene
Limonene	5.35*	1037	[90.67]	[87.71]	1161	3.14*	Monoterpene
cis-β-Ocimene	5.38	1039	0.21	4.41	1195	3.59*	Monoterpene
trans-β-Ocimene	5.56	1048	0.06	[4.41]	1195	3.59*	Monoterpene
γ-Terpinene	5.76	1059	4.24	[4.41]	1195	3.59*	Monoterpene
cis-Linalool oxide (fur.)	6.03	1074	0.03	0.02	1378	6.36	Monoterp. alcohol
Terpinolene	6.22	1084	0.12	0.13	1228	4.07	Monoterpene
trans-Linalool oxide (fur.)	6.34	1091	0.01	0.01	1407	6.85	Monoterp. alcohol
para-Cymenene	6.44	1096	0.03	0.03	1370	6.23	Monoterpene
Linalool	6.72	1107	0.03	0.02	1498	9.00	Monoterp. alcohol
trans-Pinocarveol	7.66	1141	0.02	0.02	1569	11.56	Monoterp. alcohol
Terpinen-4-ol	8.85	1184	0.07	0.06	1528	10.04	Monoterp. alcohol
α-Terpineol	9.53	1205	0.20	0.18	1623	13.80*	Monoterp. alcohol
Piperitone	11.85	1256	0.01	[0.18]	1623	13.80*	Monoterp. ketone
α-Terpinyl acetate	16.73	1343	0.02	[0.18]	1623	13.80*	Monoterp. ester
Total identified			99.97%	99.98%			

*: Two or more compounds are coeluting on this column

[xx]: Duplicate percentage due to coelutions, not taken account in the identified total

Note: no correction factor was applied

OTHER DATA

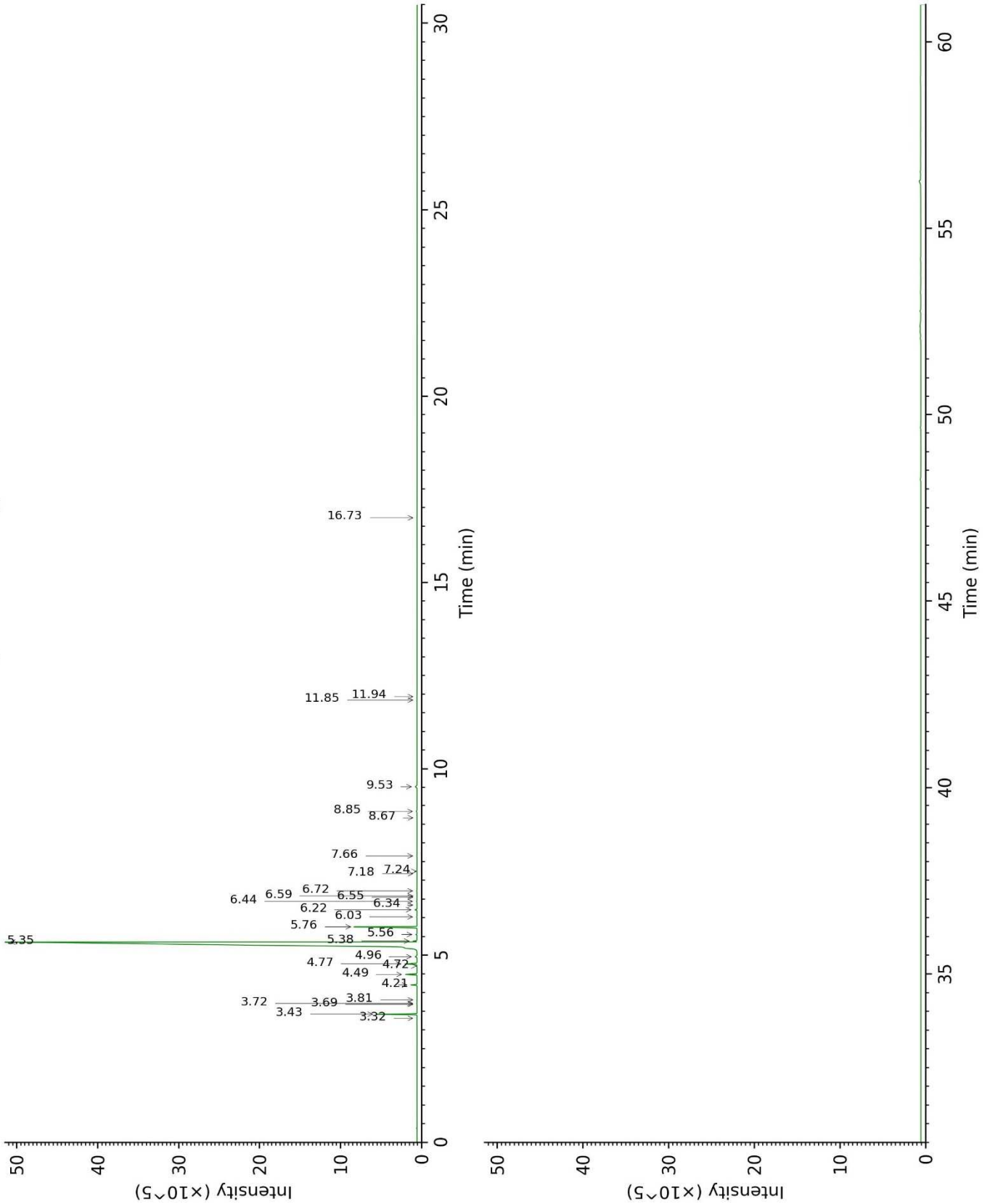
Physical aspect : Clear liquid

Refractive index : 1.4623 ± 0.0003 (20 °C)

CONCLUSION

No adulterant, contaminant or diluent were detected using this method.

17J17-PTH3-1-CC_BP5



17J17-PTH3-1-CC_WAX

