



PLANT THERAPY
100% PURE ESSENTIAL OILS

GC/MS BATCH NUMBER: E20105

ESSENTIAL OIL: EUCALYPTUS GLOBULUS
BOTANICAL NAME: EUCALYPTUS GLOBULUS
ORIGIN: CHINA

KEY CONSTITUENTS PRESENT IN THIS BATCH OF EUCALYPTUS GLOBULUS OIL	%
1,8-CINEOLE + LIMONENE	87.4
p-CYMENE	3.6
γ-TERPINENE	3.9
α-PINENE	2.5

Comments from Robert Tisserand: Very pleasant, green eucalyptus leaf odor quality. Six of the eight key ISO constituents are within range. The other two probably are as well, but we can't tell from the lab report.

Date : May 18, 2017

SAMPLE IDENTIFICATION

Internal code : 17E10-PTH18-1-DM

Customer identification : Eucalyptus Globulus - China - E2010571R

Type : Essential oil

Source : *Eucalyptus globulus*

Customer : Plant Therapy

ANALYSIS

Method : PC-PA-001-15E06, "Analysis of the composition of a liquid essential oil by GC-FID" (in French).

Analyst : Sylvain Mercier, M. Sc., chimiste

Analysis date : 2017-05-18

Checked and approved by :

Alexis St-Gelais, M. Sc., chimiste 2013-174

Note: This report may not be published, including online, without the written consent from Laboratoire PhytoChemia.

This report is digitally signed, it is only considered valid if the digital signature is intact.

IDENTIFIED COMPOUNDS

Identification	Column: BP5			Column: WAX			Molecular Class
	R.T.	R.I.	%	%	R.I.	R.T.	
α-Thujene	3.31	922	0.01	2.43	944	1.10*	Monoterpene
α-Pinene	3.42	929	2.50	[2.43]	944	1.10*	Monoterpene
α-Fenchene	3.68	944	0.01	0.01	993	1.31	Monoterpene
Camphene	3.70	946	0.02	0.01	999	1.37	Monoterpene
β-Pinene	4.19	975	0.29	0.27	1038	1.71	Monoterpene
Myrcene	4.47	991	0.59	0.55	1115	2.44	Monoterpene
α-Phellandrene	4.75	1007	0.62	0.54	1109	2.36	Monoterpene
α-Terpinene	4.94	1018	0.14	0.15	1122	2.52	Monoterpene
1,8-Cineole	5.33*	1039	90.61	87.43	1157	2.97*	Monoterp. ether
Limonene	5.33*	1039	[90.61]	[87.43]	1157	2.97*	Monoterpene
para-Cymene	5.33*	1039	[90.61]	3.56	1208	3.65	Monoterpene
cis-β-Ocimene	5.35	1040	0.18	4.02	1190	3.40*	Monoterpene
trans-β-Ocimene	5.53	1050	0.06	0.05	1201	3.55	Monoterpene
γ-Terpinene	5.73	1061	3.91	[4.02]	1190	3.40*	Monoterpene
cis-Linalool oxide (fur.)	5.98	1075	0.02	0.02	1373	6.12	Monoterp. alcohol
cis-Sabinene hydrate	6.00	1076	0.02	0.02	1401	6.57*	Monoterp. alcohol
Terpinolene	6.18	1086	0.18	0.17	1222	3.84	Monoterpene
trans-Linalool oxide (fur.)	6.29	1092	0.02	[0.02]	1401	6.57*	Monoterp. alcohol
para-Cymenene	6.38	1096	0.04	0.04	1365	5.99	Monoterpene
Linalool	6.62	1107	0.09	0.08	1489	8.54	Monoterp. alcohol
Isoamyl isovalerate	6.71	1110	0.02	0.01	1253	4.29	Aliphatic ester
endo-Fenchol	7.05	1122	0.02	0.02	1513	9.09	Monoterp. alcohol
trans-Pinocarveol	7.53	1140	0.05	0.04	1564	10.89	Monoterp. alcohol
δ-Terpineol	8.50	1175	0.02	0.02	1594	12.00	Monoterp. alcohol
Terpinen-4-ol	8.70	1182	0.17	0.16	1526	9.53	Monoterp. alcohol
α-Terpineol	9.32	1203	0.30	0.29	1623	13.10	Monoterp. alcohol
Total identified			99.89%	99.89%			

*: Two or more compounds are coeluting on this column

[xx]: Duplicate percentage due to coelutions, not taken account in the identified total

Note: no correction factor was applied

OTHER DATA

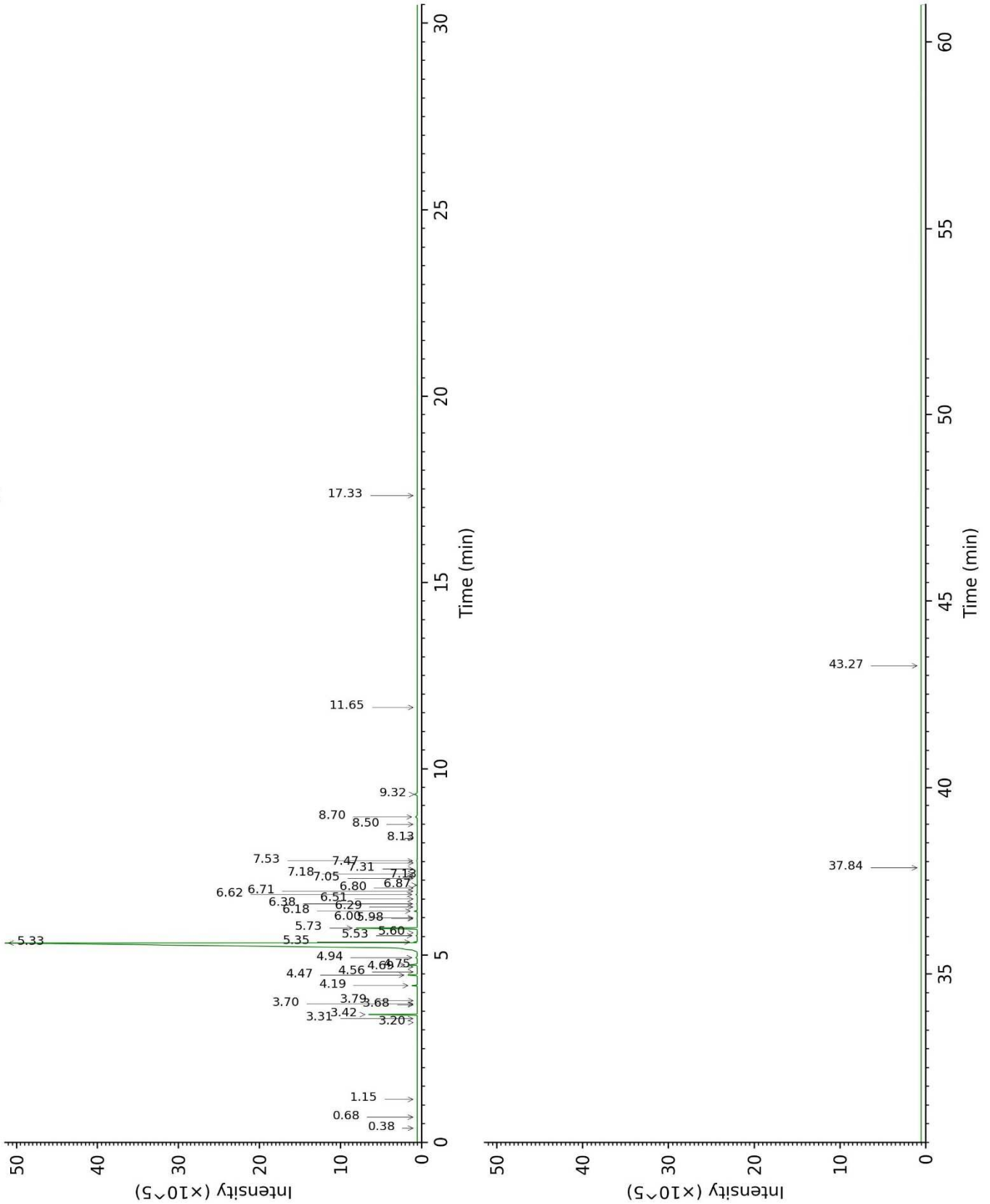
Physical aspect : Clear liquid

Refractive index : 1.4600 ± 0.0003 (20 °C)

CONCLUSION

No adulterant, contaminant or diluent were detected using this method.

17E10-PTH18-1-DM_BP5



17E10-PTH18-1-DM_WAX

