

GC/MS BATCH NUMBER: E20101

ESSENTIAL OIL: EUCALYPTUS
BOTANICAL NAME: EUCALYPTUS GLOBULUS
ORIGIN: CHINA

KEY CONSTITUENTS IN THIS BATCH OF EUCALYPTUS OIL	%
1,8-CINEOLE	80.1
LIMONENE	7.6
γ -TERPINENE	4.4
p-CYMENE	3.2
α -PINENE	0.7
α -PHELLANDRENE	0.7
α -TERPINEOL	0.5
β -PINENE	0.3
CAMPHENE	0.01

Comments from Robert Tisserand: Conforms to ISO standard for Australian type Eucalyptus globulus 80/85%, and I like the relatively green/soft odor.

CUSTOMER :

PLANT THERAPY
126 Locust Street South
Twin Falls, ID 83 301
USA

Sample nature : ESSENTIAL OIL
Botanical species : EUCALYPTUS GLOBULUS
Reference name : EUCALYPTUS GLOBULUS
Batch number : E20101
Origin : CHINA
Part: LEAF
Pyre^ossences reference : C804
Date of reception : 02/13/2015
Date analysis : 02/19/2015
Packaging : Amber flask of 5 ml – ambient temperature
Analysis : Classic

Validated report by :

Daniel DANTIN

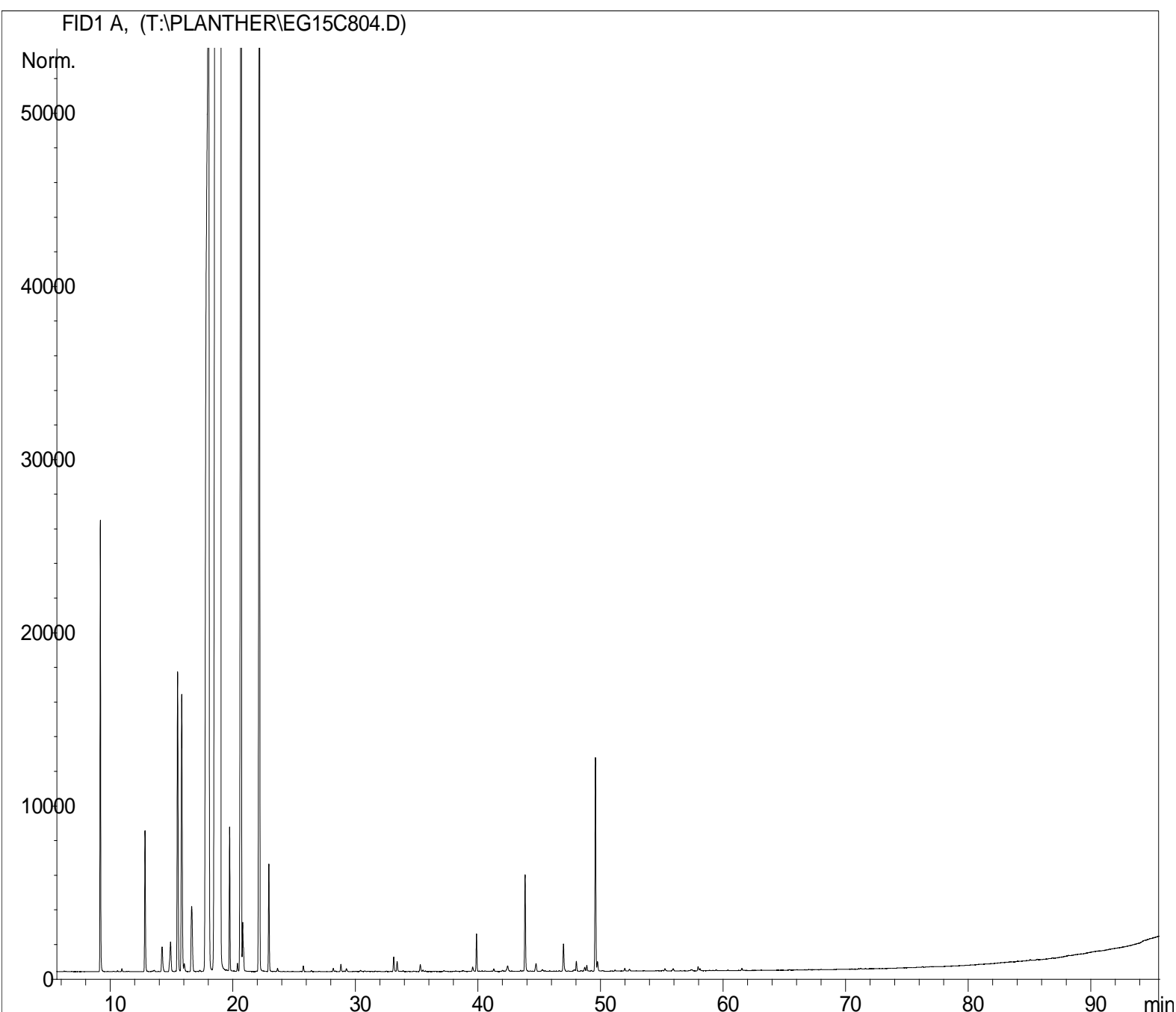


GAS CHROMATOGRAPHY norm NF ISO 11024

Analysis conditions :

CPG 7890 / MS 5975 AGILENT – Column : VF WAX polar 60 m × 0,25 mm × 0,5 µm
CPG 5890 FID AGILENT - Column : : HP INNOWAX polar 60 m × 0,25 mm × 0,5 µm
Temperature program : 6 mn to 60 °C –2 °C/mn→250 °C - 20mn to 250 °C
Carrier gas He : 23 psis/MS – 30 psis/FID
Sample injection / split : 1 µl of 10 % solution in hexane,
Mass range : 30 to 350, Oil components are identified by a combination of retention times
(our own database) and mass spectra library NKS 75 000 records,
Percentages are calculated from GC/FID peaks areas without using corrections factors,

Chromatographic profile (GC/FID)



Identification results 1 : EUCALYPTUS GLOBULUS BATCH E20101

Peak	RT (min)	Compound name	%	Norm (%)	Allergens (%)
1	9,1	α-PINENE	0,71	0,1 – 9	
2	9,3	α-THUYENE	0,01		
3	10,9	CAMPHENE	0,01	Nd – 0,2	
4	12,8	β-PINENE	0,28	Nd – 1,5	
5	13,5	PINADIENE	0,01		
6	14,2	p-MENTH-2-ENE	0,08		
7	14,9	Δ ³ -CARENE	0,10		
8	15,5	β-MYRCENE	0,70		
9	15,8	α-PHELLANDRENE	0,70	Nd – 1,5	
10	16,1	ψ-LIMONENE	0,02		
11	16,6	α-TERPINENE	0,22		
12	18,0	LIMONENE	7,63	0,1 – 12	7,63
13	19,0	1,8-CINEOLE	80,10	80 - 85	
14	19,2	MENTHATRIENE ISOMER	0,10		
15	19,7	Cis-β-OCIMENE	0,26		
16	20,4	Trans-ARBUSCULONE	0,01		
17	20,6	γ-TERPINENE	4,39		
18	20,8	Trans-β-OCIMENE	0,10		
19	20,9	MENTHATRIENE ISOMER	0,03		
20	22,2	p-CYMENE	3,15	0,5 - 4	
21	22,9	TERPINOLENE	0,21		
22	23,7	ISOVALERATE D'ISOAMYLE	0,01		
23	25,8	PINOL	0,01		
24	28,2	Trans-5-METHYL-2-ISOPROPYL-2-HEXEN-1-AL	0,01		
25	28,8	ALLO-OCIMENE	0,02		
26	29,3	PINENE EPOXIDE	0,01		
27	33,2	α,p-DIMETHYLSTYRENE	0,03		
28	33,4	Cis-LINALOOL OXIDE	0,02		
29	35,3	Trans-LINALOOL OXIDE	0,02		
30	37,3	α-COPAENE	0,01		
31	39,6	α-GURJUNENE	0,01		
32	39,9	LINALOOL	0,07		0,07
33	42,0	PINOCARVONE	0,01		
34	42,4	FENCHOL	0,02		
35	43,9	TERPINENE-4-OL	0,21		
36	44,0	β-CARYOPHYLLENE	0,01		
37	44,8	AROMADENDRENE	0,02		
38	47,0	Trans-PINOCARVEOL	0,07		
39	47,8	ZONARENE	0,01		
40	48,0	δ-TERPINEOL	0,03		
41	48,7	CYCLOHEXANEDIMETHANOL ISOMER	0,01		
42	48,9	NERAL	0,01		0,01
43	49,6	α-TERPINEOL	0,46	Nd – 12	
44	49,7	BORNEOL	0,02		
45	51,9	α-SELINENE	0,01		

Identification results 2 : EUCALYPTUS GLOBULUS BATCH E20101

Peak	RT (min)	Compound name	%	Norm (%)	Allergens (%)
46	52,3	CARVONE	0,01		
47	55,2	CADINA-1,4-DIENE	0,01		
48	55,9	SABINOL ISOMER	0,01		
49	57,4	Cis-CARVEOL	0,01		
50	57,9	CALAMENENE	0,01		
51	58,1	p-CYMENE-8-OL	0,01		
		TOTAL	99,99		7,71