



PLANT THERAPY
100% PURE ESSENTIAL OILS

GC/MS BATCH NUMBER: EE0102

ESSENTIAL OIL: ELEMI

BOTANICAL NAME: CANARIUM LUZONICUM

ORIGIN: PHILIPPINES

KEY CONSTITUENTS PRESENT IN THIS BATCH OF ELEMI OIL	%
LIMONENE	48.1
α -PHELLANDRENE	14.2
SABINENE	4.3
ELEMICIN	3.9
TERPINOLENE	2.6
α -TERPINEOL	2.4
β -PHELLANDRENE + 1,8-CINEOLE	2.3
p-CYMENE	2.1

Comments from Robert Tisserand: Beautiful lemony fresh-herb odor profile characteristic of this resinous oil. All six key ISO constituents are within range.

Date : August 30, 2018

CERTIFICATE OF ANALYSIS – GC PROFILING

SAMPLE IDENTIFICATION

Internal code : 18H23-PTH2-1-CC

Customer identification : Elemi - Philippines - EE010283R

Type : Essential oil

Source : *Canarium luzonicum*

Customer : Plant Therapy

ANALYSIS

Method: PC-PA-014-17J19 - Analysis of the composition of an essential oil, or other volatile liquid, by FAST GC-FID (in French); identifications validated by GC-MS.

Analyst : Lindsay Girard, B. Sc.

Analysis date : August 27, 2018

Checked and approved by :

Alexis St-Gelais, M. Sc., chimiste 2013-174

Note: This report may not be published, including online, without the written consent from Laboratoire PhytoChemia.

This report is digitally signed, it is only considered valid if the digital signature is intact.

PHYSICOCHEMICAL DATA

Physical aspect: Faintly yellow liquid

Refractive index: 1.4793 ± 0.0003 (20 °C)

CONCLUSION

No adulterant, contaminant or diluent has been detected using this method.

ANALYSIS SUMMARY

Identification	DB-5 (%)	DB-WAX (%)	Classe
Toluene	0.01	0.01	Simple phenolic
α -Thujene	0.13	0.12	Monoterpene
α -Pinene	0.57	0.56	Monoterpene
α -Fenchene	0.02*		Monoterpene
Camphene	[0.02]*	0.02	Monoterpene
β -Pinene	4.52*	0.20	Monoterpene
Sabinene	[4.52]*	4.33	Monoterpene
3-Methyl-3-cyclohexenone	0.05	0.04	Aliphatic ketone
6-Methyl-5-hepten-2-one	0.01		Aliphatic ketone
Myrcene	0.55	0.56	Monoterpene
α -Phellandrene	14.17	14.20	Monoterpene
Δ^3 -Carene	0.05	0.04	Monoterpene
α -Terpinene	0.39	0.38	Monoterpene
para-Cymene	2.06	2.10	Monoterpene
Limonene	50.35*	48.13	Monoterpene
β -Phellandrene	[50.35]*	2.26*	Monoterpene
1,8-Cineole	[50.35]*	[2.26]*	Monoterpenic ether
(Z)- β -Ocimene	0.27	0.28	Monoterpene
(E)- β -Ocimene	0.18	0.18	Monoterpene
γ -Terpinene	0.31	0.30	Monoterpene
cis-Sabinene hydrate	0.11	0.11	Monoterpenic alcohol
para-Cymenene	2.75*	0.12	Monoterpene
Terpinolene	[2.75]*	2.62	Monoterpene
Linalool	0.02	0.01	Monoterpenic alcohol
Unknown	0.02	0.01	Monoterpenic alcohol
trans-para-Mentha-2,8-dien-1-ol	0.09*	0.03	Monoterpenic alcohol
cis-para-Menth-2-en-1-ol	[0.09]*	0.06	Monoterpenic alcohol
Limona ketone	tr	tr	Normoterpenic ketone
allo-Ocimene	0.02*	tr	Monoterpene
cis-Limonene oxide	[0.02]*	tr	Monoterpenic ether
cis-para-Mentha-2,8-dien-1-ol	0.04	0.04	Monoterpenic alcohol
Camphor	0.08*	0.04	Monoterpenic ketone
trans-para-Menth-2-en-1-ol	[0.08]*	0.03	Monoterpenic alcohol
Epoxyterpinolene	0.04	0.02	Monoterpenic ether
Unknown	0.05	0.08	Oxygenated monoterpene
Unknown	0.12	0.10	Oxygenated monoterpene
Unknown	0.18	0.18	Oxygenated monoterpene
Terpinen-4-ol	0.62	0.58	Monoterpenic alcohol
Unknown	0.05		Oxygenated monoterpene
para-Cymen-8-ol	0.27	0.28	Monoterpenic alcohol
α -Terpineol	2.37	2.55	Monoterpenic alcohol
α -Phellandrene epoxide	0.29	0.28	Monoterpenic ether
trans-Piperitol	0.03	0.01	Monoterpenic alcohol
trans-Carveol	0.10	0.07	Monoterpenic alcohol
cis-Carveol	0.06	0.05	Monoterpenic alcohol
Carvone	0.08	0.07	Monoterpenic ketone
Carvotanacetone	0.03	0.03	Monoterpenic ketone
Unknown	0.25*	0.12	Unknown

Piperitone	[0.25]*	0.14	Monoterpenic ketone
Thymol	0.02	0.02	Monoterpenic alcohol
Carvacrol	0.07	0.06	Monoterpenic alcohol
Unknown	0.06	0.06	Unknown
δ-Elemene isomer	0.04	0.02	Sesquiterpene
α-Copaene	0.13	0.13	Sesquiterpene
β-Elemene	0.09	0.10	Sesquiterpene
Unknown	0.05	0.02	Unknown
Methyleugenol	0.25	0.28	Phenylpropanoid
β-Caryophyllene	0.15	0.16	Sesquiterpene
(trans?)-6-Hydroxypiperitone	0.04	0.06	Monoterpenic alcohol
α-Humulene	0.10	0.10	Sesquiterpene
Unknown	0.02		Unknown
Germacrene D	0.13*	0.02	Sesquiterpene
Unknown	[0.13]*		Oxygenated sesquiterpene
Viridiflorene	0.05	0.03	Sesquiterpene
α-Murolene	0.06	0.05	Sesquiterpene
epi-Elemol?	0.07	0.07	Sesquiterpenic alcohol
δ-Cadinene	0.06	0.07	Sesquiterpene
α-Elemol	9.90	9.96	Sesquiterpenic alcohol
Elemicin	3.92	4.10	Phenylpropanoid
Guaiol	0.15	0.19	Sesquiterpenic alcohol
γ-Eudesmol	0.46	0.45	Sesquiterpenic alcohol
β-Eudesmol	0.27	0.29	Sesquiterpenic alcohol
α-Eudesmol	0.26	0.24	Sesquiterpenic alcohol
Bulnesol	0.48		Sesquiterpenic alcohol
Cryptomeridiol analog	0.01	0.03	Sesquiterpenic alcohol
α-Phellandrene dimer II	0.07	0.07	Diterpene
Cryptomeridiol	0.04	0.04	Sesquiterpenic alcohol
α-Phellandrene dimer IV	0.01	0.02	Diterpene
Total identified	97.71%	97.41%	

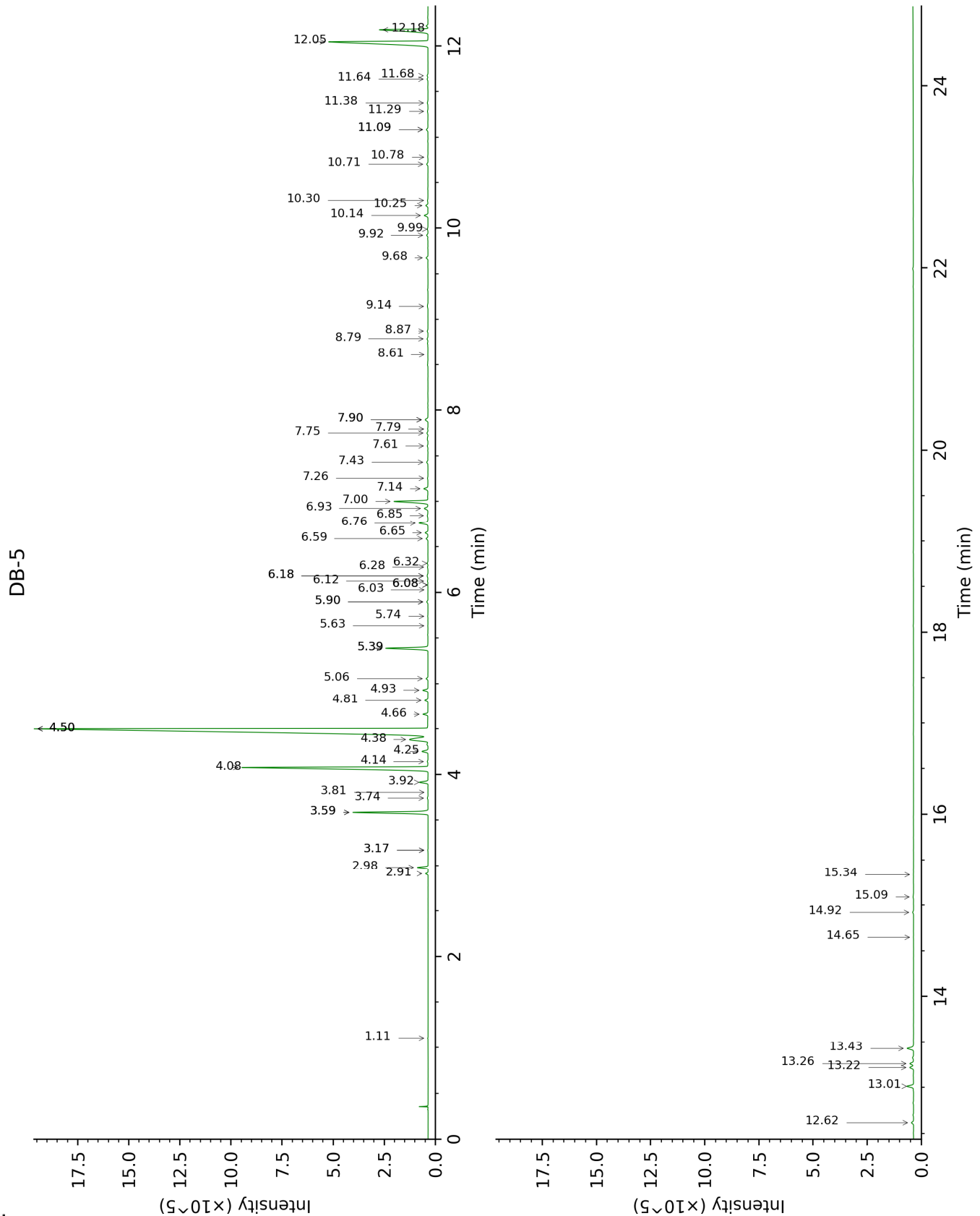
*: Two or more compounds are coeluting on this column

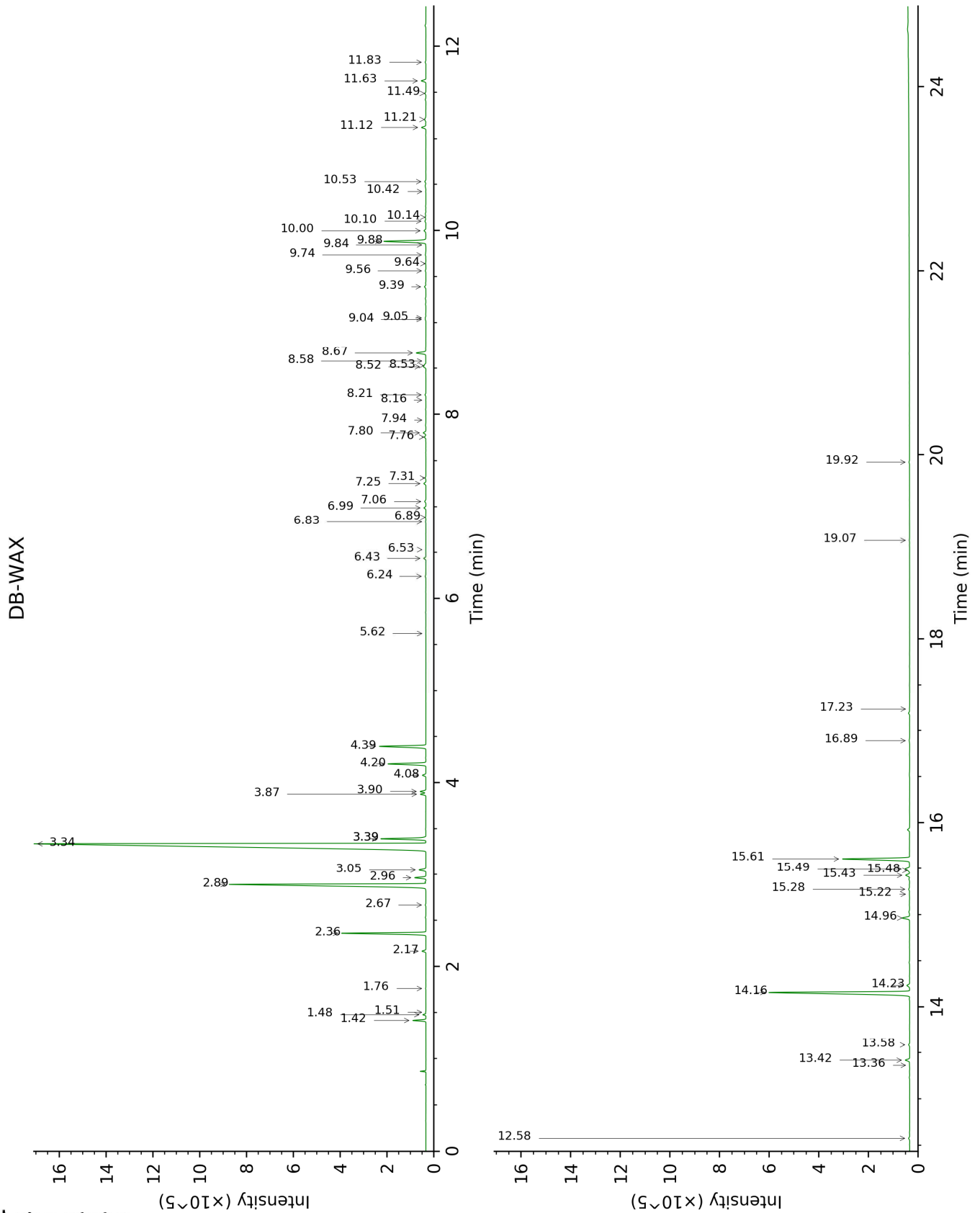
[xx]: Duplicate percentage due to coelutions, not taken account in the identified total

tr: The compound has been detected below 0.005% of total signal.

Note: no correction factor was applied

This page was intentionally left blank. The following pages present the complete data of the analysis.





FULL ANALYSIS DATA

Identification	Column DB-5			Column DB-WAX		
	R.T	R.I	%	R.T	R.I	%
Toluene	1.11	755	0.01	1.51	1005	0.01
α -Thujene	2.91	923	0.13	1.48	1002	0.12
α -Pinene	2.98	928	0.57	1.42	996	0.56
α -Fenchene	3.17*	941	0.02			
Camphene	3.17*	941	[0.02]	1.76	1030	0.02
β -Pinene	3.59*	969	4.52	2.17	1070	0.20
Sabinene	3.59*	969	[4.52]	2.36	1090	4.33
3-Methyl-3-cyclohexenone	3.74	979	0.05	6.24	1377	0.04
6-Methyl-5-hepten-2-one	3.80	983	0.01			
Myrcene	3.92	991	0.55	2.96	1140	0.56
α -Phellandrene	4.08	1002	14.17	2.89	1134	14.20
Δ 3-Carene	4.14	1006	0.05	2.67	1117	0.04
α -Terpinene	4.25	1013	0.39	3.05	1146	0.38
para-Cymene	4.38	1021	2.06	4.20	1232	2.10
Limonene	4.50*	1028	50.35	3.34	1168	48.13
β -Phellandrene	4.50*	1028	[50.35]	3.39*	1172	2.26
1,8-Cineole	4.50*	1028	[50.35]	3.39*	1172	[2.26]
(Z)- β -Ocimene	4.66	1038	0.27	3.87	1208	0.28
(E)- β -Ocimene	4.81	1048	0.18	4.08	1223	0.18
γ -Terpinene	4.93	1055	0.31	3.90	1211	0.30
cis-Sabinene hydrate	5.06	1063	0.11	6.99	1432	0.11
para-Cymenene	5.39*	1084	2.75	6.44	1391	0.12
Terpinolene	5.39*	1084	[2.75]	4.39	1245	2.62
Linalool	5.64	1100	0.02	8.16	1519	0.01
Unknown [m/z 119, 109 (94), 43 (61), 95 (56), 91 (48), 77 (32), 152 (32), 137 (31), 134 (24)]	5.74	1106	0.02	8.58	1551	0.01
trans-para-Mentha-2,8-dien-1-ol	5.90*	1117	0.09	9.04	1587	0.03
cis-para-Menth-2-en-1-ol	5.90*	1117	[0.09]	8.21	1523	0.06
Limona ketone	6.03	1125	tr	7.94	1502	tr
allo-Ocimene	6.08*	1128	0.02	5.62	1333	tr
cis-Limonene oxide	6.08*	1128	[0.02]	6.53	1398	tr
cis-para-Mentha-2,8-dien-1-ol	6.12	1131	0.04	9.56	1629	0.04
Camphor	6.18*	1135	0.08	7.31	1456	0.04
trans-para-Menth-2-en-1-ol	6.18*	1135	[0.08]	9.06	1588	0.03
Epoxyterpinolene	6.28	1141	0.04	6.83	1420	0.02

Unknown [m/z 95, 43 (74), 109 (72), 82 (62), 110 (50)... 152 (14)]	6.32	1144	0.05	7.06	1437	0.08
Unknown [m/z 95, 110 (38), 81 (21), 79 (16)... 152 (7)]	6.59	1161	0.12	7.76	1488	0.10
Unknown [m/z 95, 110 (43), 81 (28), 41 (15)... 152 (8)]	6.65	1165	0.18	7.80	1492	0.18
Terpinen-4-ol	6.76	1172	0.62	8.67	1558	0.58
Unknown [m/z 109, 82 (77), 41 (56), 119 (55), 91 (54)... 152 (17)]	6.85	1178	0.05			
para-Cymen-8-ol	6.93	1183	0.27	11.63	1801	0.28
α -Terpineol	7.00	1188	2.37	9.88	1655	2.55
α -Phellandrene epoxide	7.14	1196	0.29	11.12	1758	0.28
<i>trans</i> -Piperitol	7.26	1204	0.03	10.42	1698	0.01
<i>trans</i> -Carveol	7.43	1216	0.10	11.49	1789	0.07
<i>cis</i> -Carveol	7.61	1228	0.06	11.83	1818	0.05
Carvone	7.75	1237	0.08	10.10	1672	0.07
Carvotanacetone	7.80	1240	0.03	9.64	1635	0.03
Unknown [m/z 43, 97 (69), 107 (46), 41 (28), 55 (21), 109 (20)...]	7.90*	1247	0.25	11.21	1765	0.12
Piperitone	7.90*	1247	[0.25]	10.00	1664	0.14
Thymol	8.61	1295	0.02	15.22	2136	0.02
Carvacrol	8.79	1307	0.07	15.48	2162	0.06
Unknown [m/z 111, 126 (93), 43 (90), 71 (60)...]	8.87	1313	0.06	15.28	2141	0.06
δ -Elemene isomer	9.14	1332	0.04	6.89	1424	0.02
α -Copaene	9.68	1370	0.13	7.25	1451	0.13
β -Elemene	9.92	1387	0.09	8.53	1548	0.10
Unknown [m/z 71, 100 (92), 111 (79), 69 (46), 109 (45)...]	9.99	1392	0.05	17.23	2345	0.02
Methyleugenol	10.14	1402	0.25	13.42	1962	0.28
β -Caryophyllene	10.25	1410	0.15	8.52	1547	0.16
(<i>trans</i> ?) β -6-Hydroxypiperitone	10.30	1414	0.04	16.89	2308	0.06
α -Humulene	10.71	1445	0.10	9.39	1615	0.10
Unknown [m/z 109, 110 (33), 43 (30), 95 (23), 71 (20), 41 (19)...]	10.78	1450	0.02			
Germacrene D	11.09*	1473	0.13	9.84	1652	0.02
Unknown [m/z 149, 205 (84), 177	11.09*	1473	[0.13]			

(78), 220 (54)]						
Viridiflorene	11.29	1488	0.05	9.74	1643	0.03
α -Muurolene	11.38	1494	0.06	10.14	1676	0.05
epi-Elemol?	11.64	1515	0.07	13.58	1977	0.07
δ -Cadinene	11.68	1518	0.06	10.53	1708	0.07
α -Elemol	12.05	1547	9.90	14.16	2032	9.96
Elemicin	12.18	1557	3.92	15.61	2175	4.10
Guaiol	12.62	1592	0.15	14.23	2039	0.19
γ -Eudesmol	13.01	1624	0.46	14.96	2110	0.45
β -Eudesmol	13.22	1641	0.27	15.49	2163	0.29
α -Eudesmol	13.26	1644	0.26	15.43	2156	0.24
Bulnesol	13.43	1658	0.48			
Cryptomeridiol analog	14.65	1762	0.01	19.07	2550	0.03
α -Phellandrene dimer II	14.92	1785	0.07	12.58	1885	0.07
Cryptomeridiol	15.09	1800	0.04	19.92	2652	0.04
α -Phellandrene dimer IV	15.34	1822	0.01	13.36	1957	0.02
Total identified		97.71%			97.41%	
Total reported		98.28%			97.99%	

*: Two or more compounds are coeluting on this column

[xx]: Duplicate percentage due to coelutions, not taken account in the identified total

tr: The compound has been detected below 0.005% of total signal.

Note: no correction factor was applied

R.T.: Retention time (minutes)

R.I.: Retention index