



GC/MS BATCH NUMBER: CK0105

ESSENTIAL OIL: CORIANDER SEED
BOTANICAL NAME: CORIANDRUM SATIVUM
ORIGIN: EGYPT

KEY CONSTITUENTS PRESENT IN THIS BATCH OF CORIANDER SEED OIL	%
LINALOOL	72.6
α -PINENE	5.7
CAMPHOR	5.5
γ -TERPINENE	3.8
LIMONENE	2.8
GERANYL ACETATE	2.0
CAMPHENE	1.2
MYRCENE	1.1
p-CYMENE	1.1
GERANIOL	1.0

Date : September 7, 2017

SAMPLE IDENTIFICATION

Internal code : 17H30-PTH2-1-DM

Customer identification : Coriander Seed - Egypt - CK010577R

Type : Essential oil

Source : *Coriandrum sativum*

Customer : Plant Therapy

ANALYSIS

Method : PC-PA-001-15E06, "Analysis of the composition of a liquid essential oil by GC-FID" (in French).

Identifications double-checked by GC-MS

Analyst : Alexis St-Gelais, M. Sc., chimiste

Analysis date : 2017-09-01

Checked and approved by :

Alexis St-Gelais, M. Sc., chimiste 2013-174

Note: This report may not be published, including online, without the written consent from Laboratoire PhytoChemia.

This report is digitally signed, it is only considered valid if the digital signature is intact.

IDENTIFIED COMPOUNDS

Identification	Column: BP5			Column: WAX			Molecular Class
	R.T.	R.I.	%	%	R.I.	R.T.	
Tricyclene	3.23	915	0.03	0.03	915	1.10	Monoterpene
α -Thujene	3.31	920	0.04	5.58	943	1.21*	Monoterpene
α -Pinene	3.43	927	5.71	[5.58]	943	1.21*	Monoterpene
Camphene	3.71	944	1.15	1.12	992	1.51	Monoterpene
Sabinene	4.14	969	0.27	0.27	1057	2.05	Monoterpene
β -Pinene	4.20	973	0.46	0.42	1037	1.88	Monoterpene
Myrcene	4.48	989	1.05	1.07	1113	2.65	Monoterpene
6-Methyl-5-hepten-2-one	4.55	993	0.05	0.05	1278	4.91	Aliphatic ketone
α -Phellandrene	4.75*	1004	0.10	0.01	1108	2.58	Monoterpene
6-Methyl-5-hepten-2-ol	4.75*	1004	[0.10]	5.58	1423	7.44*	Aliphatic alcohol
para-Cymene	5.14	1026	1.06	1.07	1210	3.91*	Monoterpene
Limonene	5.18	1028	2.82	2.89	1139	2.99*	Monoterpene
β -Phellandrene	5.21	1029	0.11	[2.89]	1139	2.99*	Monoterpene
1,8-Cineole	5.23	1031	0.03	[2.89]	1139	2.99*	Monoterp. ether
<i>cis</i> - β -Ocimene	5.35	1037	0.01	3.76	1192	3.64*	Monoterpene
<i>trans</i> - β -Ocimene	5.53	1047	0.02	[1.07]	1210	3.91*	Monoterpene
γ -Terpinene	5.74	1058	3.80	[3.76]	1192	3.64*	Monoterpene
<i>cis</i> -Linalool oxide (fur.)	6.00	1072	0.11	0.10	1376	6.47	Monoterp. alcohol
<i>cis</i> -Sabinene hydrate	6.06	1076	0.06	0.09	1407	7.09*	Monoterp. alcohol
Terpinolene	6.20	1083	0.62	0.61	1225	4.14	Monoterpene
<i>trans</i> -Linalool oxide (fur.)	6.32	1090	0.11	[0.09]	1407	7.09*	Monoterp. alcohol
<i>trans</i> -Sabinene hydrate	6.53	1100	0.02	0.05	1482	8.86	Monoterp. alcohol
Linalool	6.91	1114	72.56	72.56	1503	9.49	Monoterp. alcohol
Camphor	7.83	1147	5.46	[5.58]	1423	7.44*	Monoterp. ketone
Citronellal	8.00	1153	0.05	[5.58]	1423	7.44*	Monoterp. aldehyde
Borneol	8.64	1177	0.10	0.28	1619	14.15*	Monoterp. alcohol
Terpinen-4-ol	8.81	1183	0.10	0.10	1526	10.32	Monoterp. alcohol
para-Cymen-8-ol	9.35	1201	0.02	1.07	1778	23.70*	Monoterp. alcohol
α -Terpineol	9.47	1203	0.29	[0.28]	1619	14.15*	Monoterp. alcohol
Decanal	9.58	1206	0.04	0.04	1437	7.77	Aliphatic aldehyde
Myrtenol	9.80	1211	0.05	0.08	1705	18.76	Monoterp. alcohol
Verbenone	9.93	1214	0.02	0.02	1594	12.88	Monoterp. ketone
Nerol	10.56	1227	0.02	0.02	1735	20.84	Monoterp. alcohol
Citronellol	10.81	1233	0.04	0.03	1722	19.96	Monoterp. alcohol
Neral	11.16	1240	0.03	0.03	1597	13.00	Monoterp. aldehyde
Geraniol	11.87	1256	1.02	[1.07]	1778	23.70*	Monoterp. alcohol
Geranial	12.67	1274	0.03	0.03	1658	16.22*	Monoterp. aldehyde
Myrtenyl acetate	15.19	1319	0.10	0.10	1605	13.38	Monoterp. ester
Neryl acetate	17.85	1359	0.02	[0.03]	1658	16.22*	Monoterp. ester

Geranyl acetate	19.39	1383	1.97	2.05	1691	17.98	Monoterp. ester
β -Caryophyllene	20.58	1400	0.06	0.06	1521	10.13	Sesquiterpene
Total identified	99.61%			99.17%			

*: Two or more compounds are coeluting on this column

[xx]: Duplicate percentage due to coelutions, not taken account in the identified total

Note: no correction factor was applied

OTHER DATA

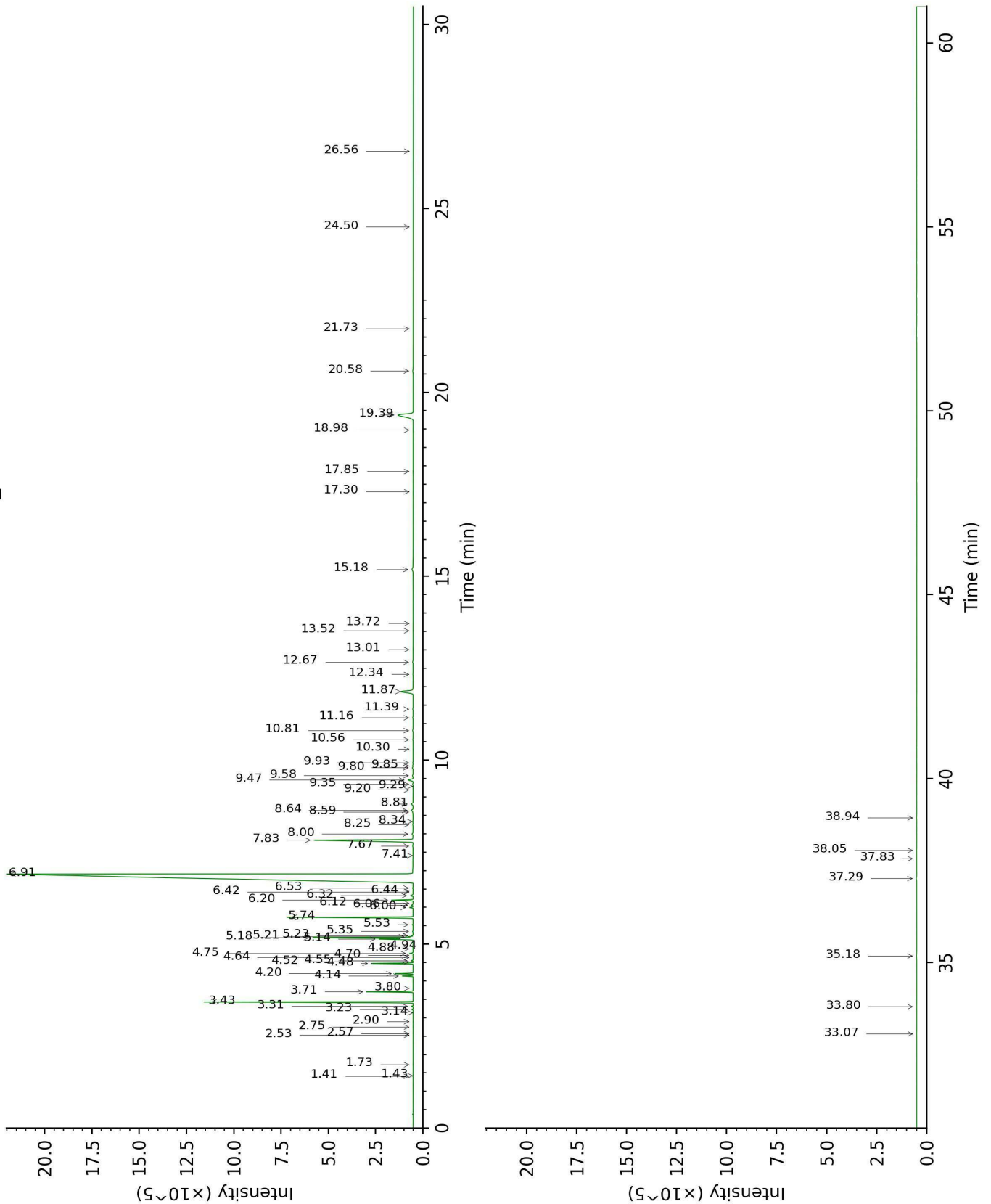
Physical aspect : Clear liquid

Refractive index : 1.4630 ± 0.0003 (20 °C)

CONCLUSION

No adulterant, contaminant or diluent were detected using this method.

17H30-PTH2-1-DM_BP5



17H30-PTH2-1-DM_WAX

