



PLANT THERAPY
100% PURE ESSENTIAL OILS

GC/MS BATCH NUMBER: CW0101

ESSENTIAL OIL: CATNIP
BOTANICAL NAME: NEPETA CATARIA
ORIGIN: CANADA

KEY CONSTITUENTS PRESENT IN THIS BATCH OF CATNIP OIL	%
NEPETALACTONE	56.0
NEPETALACTONE ISOMER	22.4
β-CARYOPHYLLENE	7.1
NEPETALACTONE ISOMER	2.6
CARYOPHYLLENE EPOXIDE	2.0
EPINEPETALACTONE	1.8
DEHYDRONEPETALACTONE ISOMER	1.5
CARVONE	1.4

Comments from Robert Tisserand: Catnip oils are unique because of their high content of nepetalactone constituents, at up to 90%, as seen in this essential oil which has 85%.

CUSTOMER :

PLANT THERAPY
126 Locust Street South
Twin Falls, ID 83 301
USA

Sample nature : ESSENTIAL OIL
Botanical species : NEPETA CATARIA
Reference name : CATNIP
Batch number : CW0101
Origin : CANADA
Part: FLOWERING TOP
Pyrenessences reference : F064
Date of reception : 10/02/2015
Date analysis : 10/15/2015
Packaging : Brown flask of 5 ml – ambient temperature
Analysis : Classic

Validated report by :

Daniel DANTIN



GAS CHROMATOGRAPHY norm NF ISO 11024

Analysis conditions :

CPG 6890 / MS 5973 – Column : VF WAX polar 60 m × 0,25 mm × 0,5 µm

CPG 6890 FID - Column : VF WAX polar 60 m × 0,25 mm × 0,5 µm

Temperature program : 6 mn to 60 °C -2 °C/mn→250 °C - 20mn to 250 °C

Carrier gas He : 23 psis/MS – 30 psis/FID

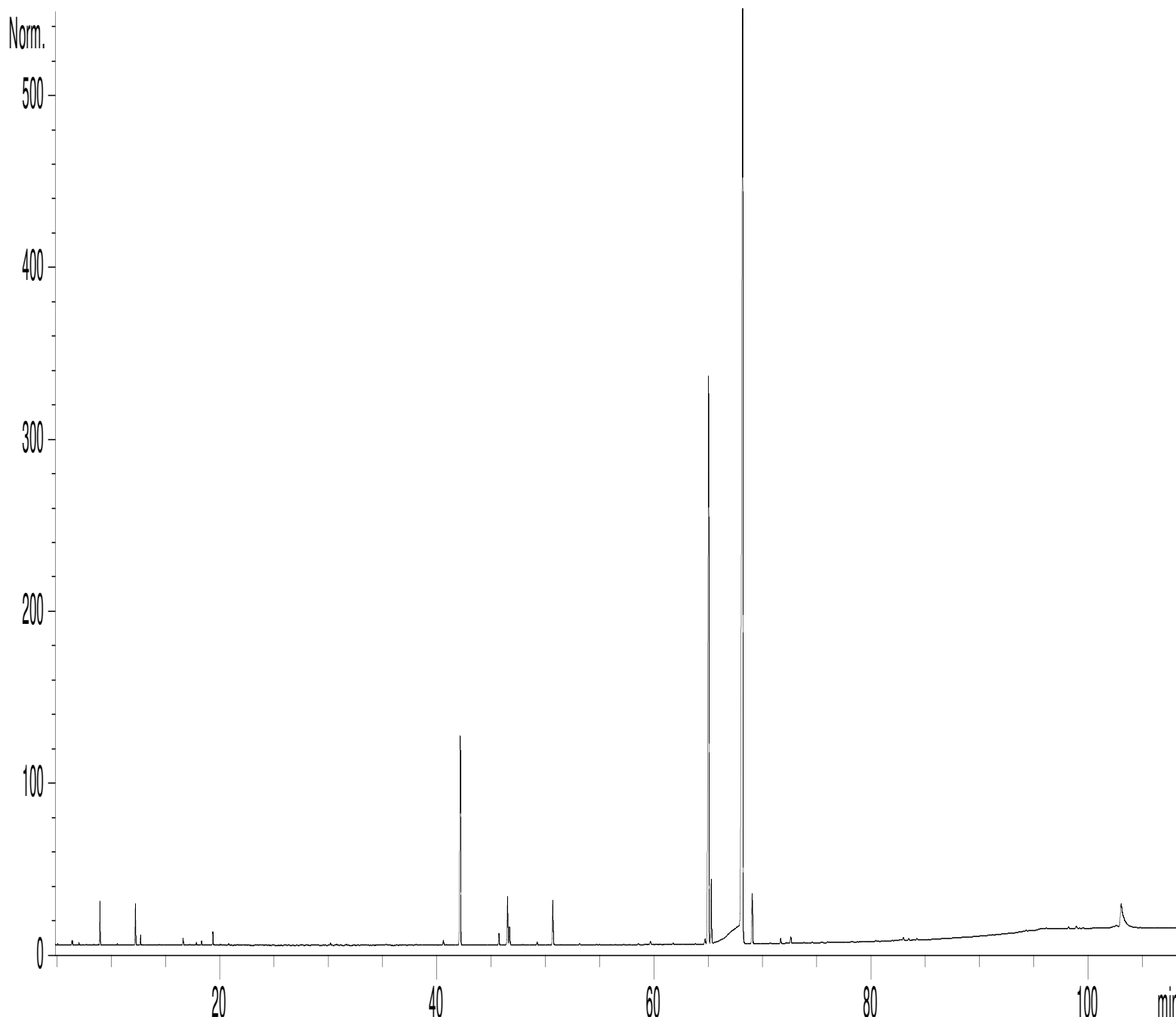
Sample injection / split : 1 µl of 10 % solution in hexane,

Mass range : 30 to 350, Oil components are identified by a combination of retention times (our own database) and mass spectra library NKS 75 000 records,

Percentages are calculated from GC/FID peaks areas without using corrections factors,

Chromatographic profile (GC/FID)

FID2 B, (Z:\PLANTHER\NC01F064.D)



Identification results 1 : CATNIP CANADA BATCH N° CW0101

Peak	RT (min)	Component name	%	Norm (%)	Allergens (%)
1	5,1	BUTANAL	0,02		
2	6,4	BUTANAL, 2-METHYL	0,06		
3	6,5	ISOVALERALDEHYDE	0,07		
4	7,0	FURAN, 2-ETHYL	0,04		
5	8,4	METHYL, 2-METHYLBUTYRATE	0,02		
6	8,9	OCTATRIENE ISOMER Mw=108	0,01		
7	9,0	α -PINENE	0,79		
8	10,5	CAMPHENE	0,03		
9	12,2	β -PINENE	0,89		
10	12,7	SABINENE	0,21		
11	14,4	β -MYRCENE	0,02		
12	16,6	LIMONENE	0,15		0,15
13	17,2	β -PHELLANDRENE	0,02		
14	17,8	2-HEXENAL	0,06		
15	18,3	Cis- β -OCIMENE	0,10		
16	19,4	Trans- β -OCIMENE	0,31		
17	20,1	STYRENE	0,03		
18	20,8	p-CYMENE	0,06		
19	21,6	TRIDECANE	0,02		
20	30,2	TETRADECANE	0,06		
21	30,7	ETHANONE, METHYLCYCLOPENTENYL	0,03		
22	31,7	1-OCTEN-3-OL	0,03		
23	38,1	LINALOOL	0,04		0,04
24	40,6	ISOCARYOPHYLLENE	0,15		
25	42,2	β-CARYOPHYLLENE	7,10		
26	45,7	E- β -FARNESENE	0,34		
27	46,5	DEHYDRONPETALACTONE ISOMER	1,53		
28	46,7	α -HUMULENE	0,59		
29	49,2	5-HEPTENAL, 2,6-DIMETHYL	0,08		
30	50,7	CARVONE	1,44		
31	53,1	METHYL SALICYLATE	0,04		
32	59,7	NEPETALACTONE ISOMER	0,10		
33	61,8	ALIPHATIC ESTER	0,07		
34	64,7	NEPETALACTONE ISOMER	0,19		
35	65,0	NEPETALACTONE ISOMER	22,39		
36	65,3	CARYOPHYLLENE EPOXIDE	1,98		
37	68,2	NEPETALACTONE	55,96		
38	69,1	EPINPETALACTONE	1,76		
39	71,7	DIHYDRONPETALACTONE	0,16		
40	72,6	PENTADECANONE TRIMETHYL	0,24		
41	83,5	NEPETALACTONE COMPONENT	0,07		
42	103,1	NEPETALACTONE ISOMER Mw=166	2,64		
		TOTAL	99,90		0,19