



PLANT THERAPY

100% PURE ESSENTIAL OILS

GC/MS BATCH NUMBER: C20100

ESSENTIAL OIL: CAJEPUT ORGANIC
BOTANICAL NAME: MELALEUCA CAJEPUTII
ORIGIN: INDONESIA

KEY CONSTITUENTS PRESENT IN THIS BATCH OF ORGANIC CAJEPUT OIL	%
1,8-CINEOLE	61.7
α -TERPINEOL	11.1
LIMONENE	4.9
LINALOOL	3.0
α -PINENE	1.7
β -PINENE	1.3
β -MYRCENE	1.3
TERPINEN-4-OL	1.2

Comments from Robert Tisserand: I'm happy with this oil, which shows the characteristic odor of Cajeput oil, and the constituents are all in expected amounts.

CUSTOMER :

**PLANT THERAPY
126 Locust Street South
Twin Falls, ID 83 301
USA**

Sample nature: ESSENTIAL OIL
Botanical species: MELALEUCA CAJEPUTII
Reference name: CAJEPUT ORGANIC
Batch number: C20100
Origin: INDONESIA
Part: LEAF
Pyre^ossences reference: D262
Date of reception: 03/25/2015
Date analysis: 04/11/2015
Packaging: Amber flask of 4 ml – ambient temperature
Analysis: Classic

Validated report by :

Daniel DANTIN



GAS CHROMATOGRAPHY norm NF ISO 11024

Analysis conditions :

CPG 6890 / MS 5973 – Column : VF WAX polar 60 m × 0,25 mm × 0,5 µm

CPG 6890 FID - Column : VF WAX polar 60 m × 0,25 mm × 0,5 µm

Temperature program : 6 mn to 60 °C –2 °C/mn→250 °C - 20mn to 250 °C

Carrier gas He : 23 psis/MS – 30 psis/FID

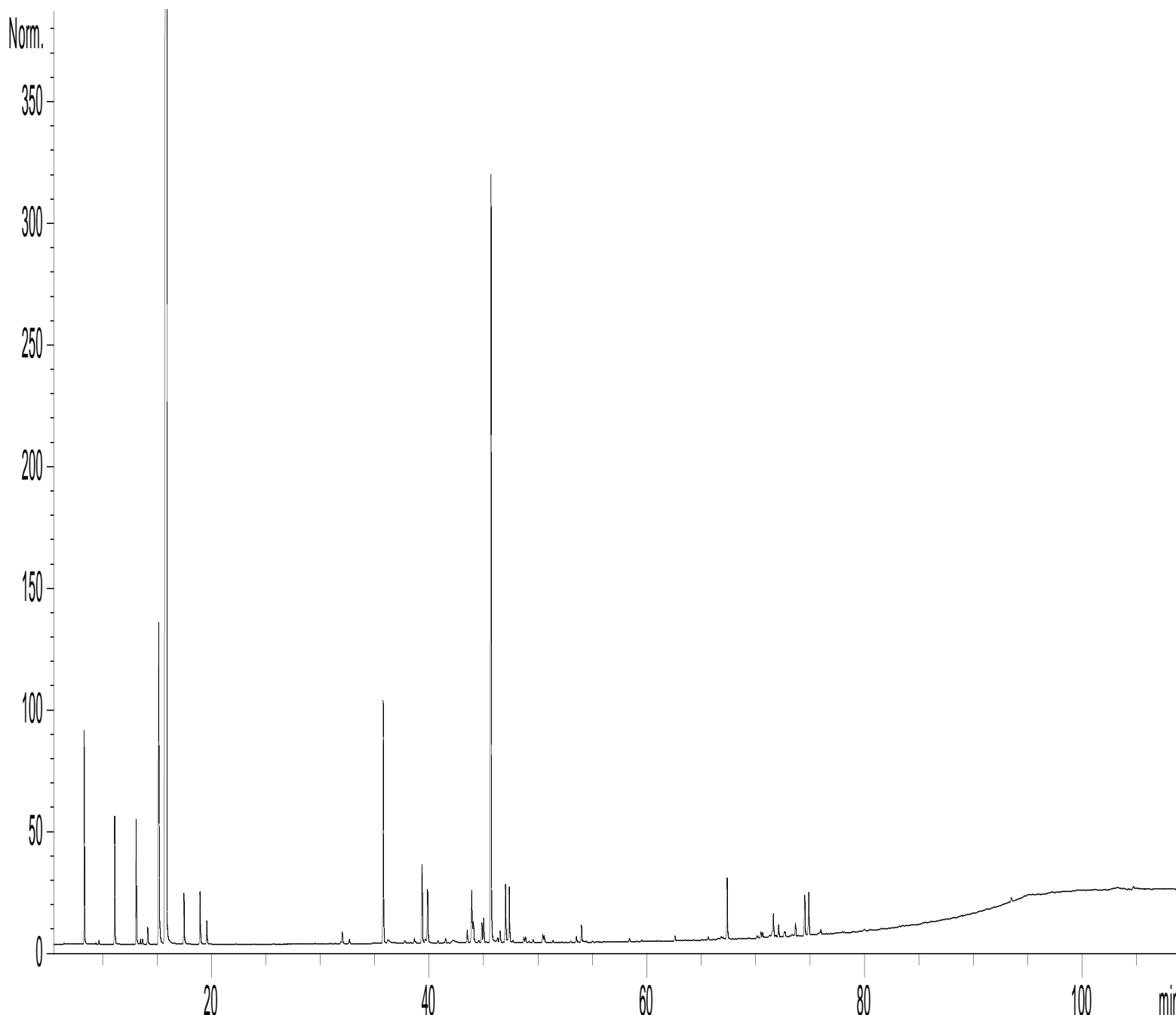
Sample injection / split : 1 µl of 10 % solution in hexane,

Mass range : 30 to 350, Oil components are identified by a combination of retention times
(our own database) and mass spectra library NKS 75 000 records,

Percentages are calculated from GC/FID peaks areas without using corrections factors,

Chromatographic profile (GC/FID)

FID1 A, (Z:\PLANTHER\MC59D262.D)



Identification results 1 : CAJEPUT ORGANIC BATCH C20100

Peak	RT (min)	Compound name	%	Norm	Allergens (%)
1	6,4	ETHANOL	0,01		
2	8,3	α -PINENE	1,66		
3	8,4	α -THUYENE	0,15		
4	9,4	α -FENCHENE	0,01		
5	9,7	CAMPHERE	0,03		
6	11,1	β -PINENE	1,32		
7	11,5	SABINENE	0,01		
8	13,1	β -MYRCENE	1,32		
9	13,5	α -PHELLANDRENE	0,05		
10	13,7	ψ -LIMONENE	0,06		
11	14,1	α -TERPINENE	0,22		
12	15,2	LIMONENE	4,91		4,91
13	15,9	1,8-CINEOLE	61,69		
14	16,6	Cis- β -OCIMENE	0,01		
15	17,5	γ -TERPINENE	0,59		
16	18,8	Trans- β -OCIMENE	0,05		
17	19,0	p-CYMENE	0,70		
18	19,6	TERPINOLENE	0,31		
19	29,5	α ,p-DIMETHYLSTYRENE	0,01		
20	29,7	LINALOOL Cis-OXIDE	0,01		
21	30,9	LINALOOL trans-OXIDE	0,01		
22	31,4	δ -ELEMENE	0,01		
23	31,9	SESQUITERPENE	0,01		
24	32,0	YLANGENE	0,19		
25	32,7	α -COPAENE	0,07		
26	34,9	SESQUITERPENE	0,01		
27	35,8	LINALOOL	3,04		3,04
28	36,2	BENZALDEHYDE	0,11		
29	37,7	METHYL CITRONELLATE	0,04		
30	37,8	SESQUITERPENE	0,02		
31	38,3	ISOPULEGOL	0,02		
32	38,6	ARISTOLENE	0,07		
33	38,7	FENCHOL	0,03		
34	39,3	TERPINENE-4-OL	1,19		
35	39,6	β -ELEMENE	0,06		
36	39,7	α -GUAIENE	0,03		
37	39,8	β -CARYOPHYLLENE	0,83		
38	40,8	CADINADIENE ISOMER	0,04		
39	42,2	GERMACRENE A + SESQUITERPENE	0,16		
40	43,5	δ -TERPINEOL	0,19		
41	43,9	α -HUMULENE	0,81		
42	44,0	γ -SELINENE	0,43		
43	44,5	NERAL	0,03		0,03
44	44,8	4,5-di-épi-ARISTOLOCHENE	0,30		
45	45,0	γ -MUUROLENE	0,36		

Identification results 2 : CAJEPUT ORGANIC BATCH C20100

Peak	RT (min)	Compound name	%	Norm	Allergens (%)
46	45,7	α -TERPINEOL	11,11		
47	45,9	BORNEOL	0,13		
48	45,6	CALARENE	0,06		
49	46,2	α -GURJUNENE	0,02		
50	46,3	EREMOPHILENE	0,06		
51	46,5	GERMACRENE D	0,20		
52	46,8	SESQUITERPENE	0,01		
53	47,0	α -MUUROLENE + β -SELINENE	0,91		
54	47,3	α -SELINENE	0,94		
55	47,6	7-épi- α -SELINENE	0,01		
56	47,7	SESQUITERPENE	0,03		
57	48,7	GERANYL ACETATE	0,08		
58	48,8	δ -CADINENE	0,09		
59	49,2	γ -CADINENE	0,03		
60	49,5	δ -SELINENE + SESQUITERPENE	0,06		
61	50,4	SELINA-4,7-DIENE	0,12		
62	50,6	SELINA-3,7(11)-DIENE	0,12		
63	51,4	NEROL	0,04		
64	53,0	Trans-ANETHOL	0,01		
65	53,0	SELINENE ISOMER	0,01		
66	53,5	CALAMENENE + GERMACRENE B	0,09		
67	54,0	GERANIOL	0,25		0,25
68	54,2	p-CYMENE-8-OL	0,02		
69	54,4	EXO-2-HYDROXYCINEOLE	0,02		
70	55,0	Épi-CUBEBOL	0,02		
71	58,4	CALACORENE	0,06		
72	59,5	CUBEBOL	0,02		
73	62,6	CARYOPHYLLENE OXIDE	0,06		
74	65,6	EPOXY-6,7-HUMULENE	0,05		
75	66,1	METHYL OCTAHYDROANTHRACENE Mw=200	0,01		
76	66,5	CUBENOL	0,02		
77	66,8	GLOBULOL	0,05		
78	67,0	ELEMOL	0,04		
79	67,4	GUAIOL	0,86		
80	69,5	SESQUITERPENOL	0,02		
81	69,4	EUDESMA-5-EN-11- α -OL	0,01		
82	70,1	SESQUITERPENOL	0,04		
83	70,5	SESQUITERPENOL	0,09		
84	70,6	MAALIOL ISOMER	0,08		
85	71,3	EUGENOL	0,05		0,05
86	71,5	ACETOXY KETONE COMPONENT	0,08		
87	71,6	γ -EUDESMOL	0,41		
88	71,8	MINT SULFIDE Mw=236	0,04		
89	72,1	GUAIOL ISOMER	0,19		
90	72,6	α -MUUROLOL	0,06		

Identification results 3 : CAJEPUT ORGANIC BATCH C20100

Peak	RT (min)	Compound name	%	Norm	Allergens (%)
91	72,7	HINESOL	0,07		
92	73,3	SESQUITERPENOL	0,05		
93	73,6	BULNESOL	0,21		
94	74,5	α -EUDESMOL	0,63		
95	74,9	β -EUDESMOL	0,69		
96	76,0	EUDESMA-7-EN-4-OL	0,15		
		TOTAL	99,66		8,28