



PLANT THERAPY
100% PURE ESSENTIAL OILS

GC/MS BATCH NUMBER: BO0101

ESSENTIAL OIL: BUDDHA WOOD
BOTANICAL NAME: EREMOPHILA MITCHELLII
ORIGIN: AUSTRALIA

KEY CONSTITUENTS PRESENT IN THIS BATCH OF BUDDHA WOOD OIL	%
EREMOPHILONE	35.8
2-HYDROXYEREMOPHILONE	25.7
8- HYDROXYDIHYDROEREMOPHILONE	13.8
9-HYDROXY-1,7(11),9- EREMOPHILATRIEN-8-ONE	5.4
8-HYDROXY-1,11- EREMOPHILADIEN-9-ONE	1.3
β-SELINENE	1.0

Comments from Robert Tisserand: Has a warm and fuzzy, Madjoul date odor quality with a background reminiscent of Palmarosa and Vetiver. Constituents are in expected amounts.

Date : April 28, 2017

SAMPLE IDENTIFICATION

Internal code : 17D24-PTH6-1-DM

Customer identification : Buddha Wood - Australia - BO010168R

Type : Essential oil

Source : *Eremophila mitchellii*

Customer : Plant Therapy

ANALYSIS

Method : PC-PA-001-15E06, "Analysis of the composition of a liquid essential oil by GC-FID" (in French).

Analyst : Sylvain Mercier, M. Sc., chimiste

Analysis date : 2017-04-27

Checked and approved by :

Alexis St-Gelais, M. Sc., chimiste 2013-174

Note: This report may not be published, including online, without the written consent from Laboratoire PhytoChemia.

This report is digitally signed, it is only considered valid if the digital signature is intact.

IDENTIFIED COMPOUNDS

Identification	Column: BP5			Column: WAX			Molecular Class
	R.T.	R.I.	%	%	R.I.	R.T.	
β-Elemene	18.76	1377	0.02	0.01	1525	9.48	Sesquiterpene
Unknown (m/z = 111, 126 (62), 41 (47), 69 (44), 179 (28), 123 (28)... 194 (17)...))	23.57	1440	0.07				
4,5-diepi-Aristolochene	24.45	1450	0.20	0.27	1595	12.04*	Sesquiterpene
γ-Selinene	24.92	1456	0.07	[0.27]	1595	12.04*	Sesquiterpene
β-Selinene	26.08*	1470	1.31	1.03	1627	13.30	Sesquiterpene
Eremophilene	26.08*	1470	[1.31]	0.24	1629	13.37	Sesquiterpene
α-Selinene	26.61	1476	0.23	0.22	1635	13.71	Sesquiterpene
Nootkatene	27.33	1485	0.14	0.12	1696	16.88	Sesquiterpene
γ-Vetivenene	29.89	1518	0.03	0.03	1727	18.51	Sesquiterpene
β-Vetivenene	30.83	1531	0.06	0.07	1736	19.12	Sesquiterpene
Unknown (m/z = 96, 68 (95), 206 (91), 109 (53), 67 (49))	33.33	1566	0.13				
Unknown (m/z = 151, 152 (67), 194 (61), 109 (60), 124 (50), 110 (46), 137 (42))	34.50	1582	0.35				
Unknown (m/z = 43, 81 (100), 135 (77), 204 (72), 67 (70), 71 (68), 189 (63), 207 (62), 95 (61)... 222 (5))	35.93	1604	1.17	1.10	2030	37.04	Oxygenated sesquiterp.
Unknown (m/z = 111, 55 (100), 41 (97), 109 (93), 108 (72), 189 (71), 67 (70)... 204 (63), 222 (4))	37.52	1643	1.08				Oxygenated sesquiterp.
Unknown (m/z = 151, 109 (32), 67 (23), 95 (18), 41 (17)... 220 (7))	37.79	1650	0.88				Oxygenated sesquiterp.
Unknown (m/z = 93, 108 (66), 109 (51), 91 (48), 107 (38)... 218 (21))	38.56	1668	3.51	3.39	2126	40.05	Oxygenated sesquiterp.
Unknown (m/z = 109, 236 (87), 193 (69), 123 (69), 41 (67), 207 (55), 55 (52), 91 (51))	40.19	1711	0.48				Sesquiterp. alcohol
Eremophilone	40.98	1736	35.77	36.44	2196	41.93	Sesquiterp. ketone
8-Hydroxydihydroeremophilone	41.38	1748	13.82	14.04	2277	43.92*	Sesquiterp. alcohol
8-Hydroxy-1,11-eremophiladien-9-one	41.48	1751	1.25	[14.04]	2277	43.92*	Sesquiterp. alcohol

Unknown (m/z = 137, 234 (78), 191 (74), 109 (64), 163 (58), 41 (55), 91 (53))	41.66	1757	1.50				Sesquiterp. alcohol
Unknown (m/z = 161, 177 (95), 215 (72), 91 (53), 189 (52)... 232 (34))	42.33	1778	0.28				Sesquiterp. alcohol
Unknown (m/z = 234, 217 (46), 41 (27), 67 (26), 205 (23))	42.39	1780	0.80				Sesquiterp. alcohol
Unknown (m/z = 218, 161 (92), 147 (84), 191 (70), 234 (66), 91 (63))	42.68	1789	0.48				Sesquiterp. alcohol
2-Hydroxyeremophilone	44.02	1836	25.70	26.38	2342	45.39	Sesquiterp. alcohol
Unknown (m/z = 232, 91 (31), 217 (29), 77 (22), 231 (21), 215 (21))	44.18	1842	0.66	1.15	2378	46.15	Sesquiterp. alcohol
9-Hydroxy-1,7(11),9-eremophilatrien-8-one	44.97	1871	5.37	6.65	2466	47.99	Sesquiterp. alcohol
Total identified			83.97%	85.50%			

*: Two or more compounds are coeluting on this column

[xx]: Duplicate percentage due to coelutions, not taken account in the identified total

Note: no correction factor was applied

OTHER DATA

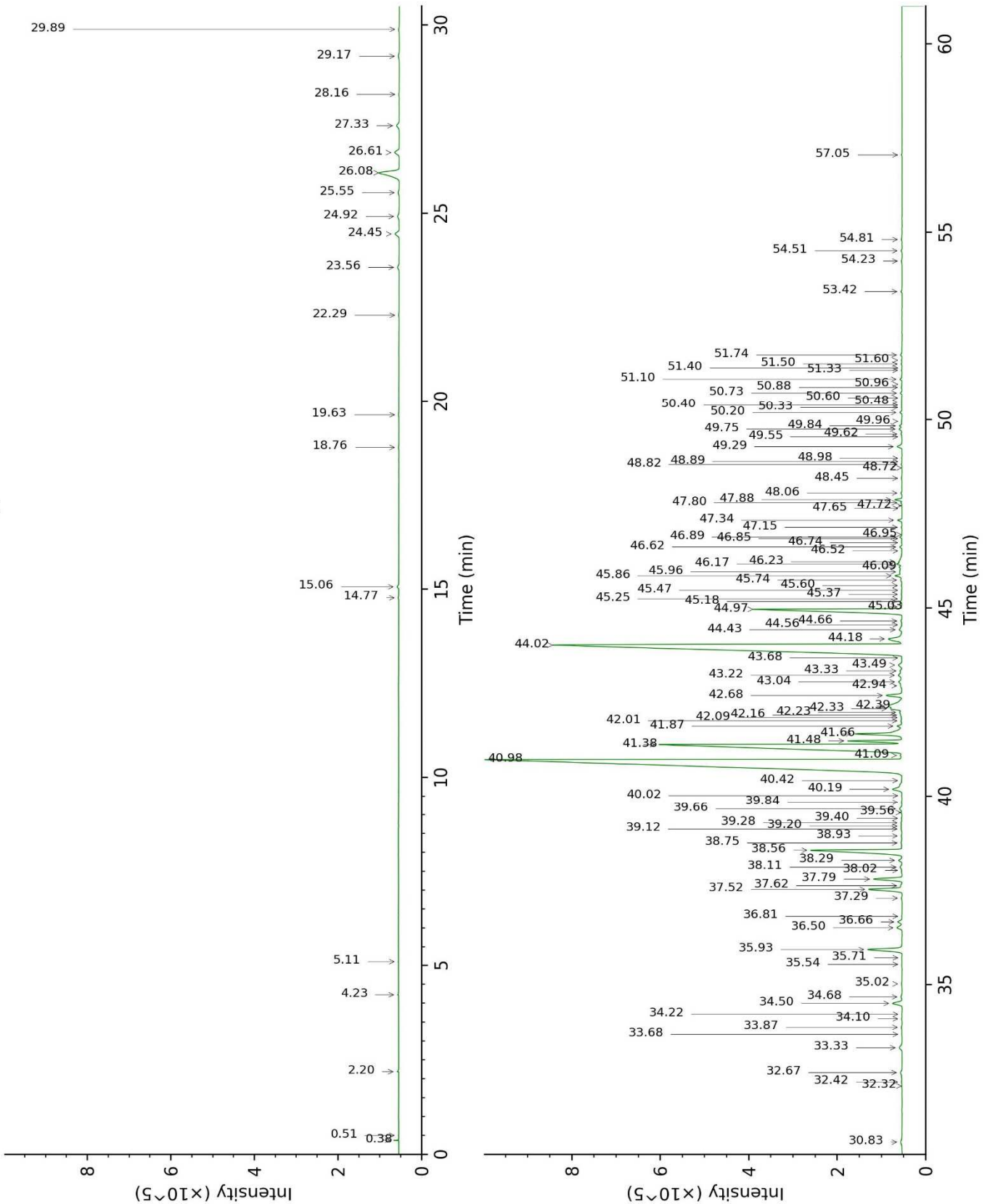
Physical aspect : Bright red liquid

Refractive index : 1.5325 ± 0.0003 (20 °C)

CONCLUSION

No adulterant, contaminant or diluent were detected using this method.

17D24-PTH6-1-DM_BP5



17D24-PTH6-1-DM_WAX

